



**The Sweet  
Life Comedy  
Tour  
featuring  
Scott Davis  
NOV. 14**

**Concerts & Events | PAGE 13**



**Israel Trip, Part 3 | PG. 11-12**

CELEBRATING FAITH, FAMILY AND COMMUNITY IN KANSAS CITY

VOLUME 26 • NUMBER 11

**November 2015**

**FREE-TAKE ONE!**

## Thousands Gather in Nation's Capital to Pray for Revival

(WNS)--Musicians Keith and Kristyn Getty headlined the second annual Washington Prayer Gathering last month as thousands of Christians converged on the National Mall.

The diverse crowd met in the shadow of the Lincoln Memorial and prayed prayers of repentance for personal sins, the sins of Washington, D.C., and the sins of churches. They



also prayed for revival to break out in the United States. Organizers vowed to continue holding the annual event until another Great Awakening takes hold.

Vocalists and pastors delivered messages in Korean, Spanish, and English to a crowd that spilled down the steps and around the Reflecting Pool between the Lincoln Memorial and the Washington Monument. Many stood with arms lifted high, while others huddled in circles of prayer. Some lay prostrate on the steps and in the grass.

The event included more than 250 churches in Washington, northern

# FOOTBALL, FAITH, AND FAMILY



## Arrowhead is first NFL stadium with on-site worship services

**Alan Goforth** | Metro Voice News

On Sunday afternoons in the fall, Arrowhead Stadium is home to the largest prayer meeting in Kansas City. More than 75,000 Chiefs fans pray for a first down, a

goal-line stand or long field-goal attempt.

And since the beginning of the 2014 season, the fans have also had the opportunity to gather for pregame worship at the Pavilion at Arrowhead, which is adjacent to the stadium.

The FCA Faith and Family Chapel, the first of its kind in the NFL, grew out of a conversation between Chiefs chaplain Phillip Kelley and Marcellus Casey, the FCA Metro Kansas City director.

■ See **ARROWHEAD** page 22

# THE SEASON OF CARING AND SHARING

by **Dwight Widaman**

In the holiday issue of The Light, the newsletter of City Union Mission, Director Dan Doty reminds us that Christmas is one of those special holidays that most of us long to keep centered on that most special of gifts—the Christ Child.

“Yet,” says Doty, “so many of us get overly caught up in the gift-giving and receiving side of Christ-

mas that we crowd out that baby born to bring salvation and eternal life to the world.”

**How can  
you help?  
See pages  
4 & 5**

Metro Voice has annually used our November edition to connect area believers with ministries that serve the homeless and at-risk families in our communities. Through our Ministry Needs Guide, we publish the Christmas “wish list” of these organizations and how you can help them

meet the growing needs facing many Kansas City area citizens. In addition, we focus on several of the larger organizations and what they are doing to meet the needs of the holiday season, starting with Thanksgiving and running to Christmas.

We hope through these efforts, our readers and the broader community will find a place to “plug in” and serve our less fortunate neighbors.

See page 4 for our Homeless Thanksgiving feature and a list of organizations and their Christmas “wish list” and how you can help.



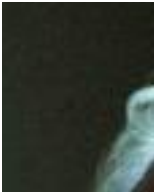
## Free Concert

World Revival Church will host a special free concert featuring the award-winning artist Paul Wilbur Nov. 13 at 7pm in Kansas City.

Wilbur is an internationally acclaimed worship artist, song writer, pastor, and teacher. Through his newly released book "Touching the Heart of God: Embracing the Calendar of the Kingdom," Wilbur longs to reunite Christians with their Jewish foundation, thereby, creating unity among God's people—Jew and Gentile. Paul speaks a language of melody and meaning that reaches far beyond cultural, social, and political borders to touch people directly with the love of God.

For over 38 years, Paul has been leading worship before crowds of thousands in the Middle East and singing to packed soccer stadiums throughout Latin America. He holds a Latin Dove Award for best live praise and worship album of the year.

For info visit wrkc.com or call 816-763-0708



## University chapel gets make-over, upsets Christians

by Hazel Torres | ChristianToday.com

Wichita State University (WSU) students and alumni are upset that the school's chapel has been expunged of any Christian symbols. The school's Muslim students have succeeded in taking over what used to be the Christian chapel of their university, to the dismay of the school's majority Christian population.

The students were aided in gaining control of the Christian prayer area with the help of the administrators of WSU who, last May, decided to make the university's chapel "faith neutral" to accommodate Muslim students.

University officials ordered workers to remove all the pews, crosses, the altar and anything related to the Christian faith inside the Harvey D. Grace Memorial Chapel. Muslim prayer rugs and some portable chairs were then brought inside.

In a statement, WSU President John Bardo said the changes were in compliance with the wishes of the chapel's benefactor, Mrs. Harvey D. Grace, who in her last will wrote that "this chapel will be

open to all creeds and to all races of people."

Though Grace has never questioned the cross or other symbolism used in the chapel, Bardo said they took it upon themselves to convert the chapel into a facility "welcoming to all religious groups on campus."

But the changes ultimately resulted in a "Christian cleansing," according to news reports. "Anything remotely related to the décor of a Christian church was given the heave-ho."

Student alumni and university donors protested the removal of the pews and altar. "Why did they have to take out all the pews?" alum Jean Ann Cusick wrote on Facebook.

The university's Muslim organization, now in control of the facility, is dismissing the Christian concern, calling it "Islamophobia," or prejudice against Muslims.

Of the university's 15,000 predominantly Christian students, only about

University officials have required all Christian symbols to be removed from the chapel at Wichita State University.



1,000 are Muslims.

Christian students have continued to appeal to university administrators not to deprive its majority Christian student population of their religious rights and use of the chapel.

Apparently feeling the pressure, President Bardo recently ordered a committee to be formed to study possible changes in the facility to address the concerns of the school's Christian students.

"I don't think that change was undertaken with enough consideration of the feelings of all elements of the campus and broader community," he said.

Meanwhile, Muslim students are also seeking more accommodation, beyond the chapel, across the entire university. They recently presented a petition calling for the university to install Islamic-friendly plumbing—specifically, handheld bidets in restrooms around the campus.

## newsbriefs

### Children found in FBI sex trafficking sting

A nationwide FBI sex trafficking sting recently included the recovery of two Missouri juveniles in the Kansas City area. Kansas City area FBI Spokesperson Bridget Patton said eight pimps were also arrested in the Kansas City and Wichita areas.

Patton said sex trafficking happens everywhere. "Sex trafficking of juveniles is not something that just takes place in large cities. This is a heinous crime that takes place across the entire nation, from Puerto Rico to Maine. It does not necessarily just have to be at large sporting events or in large cities. It can be in rural areas. It can be in the heart of America," said Patton.



Patton said the victims are receiving care. "Federal, state and local law enforcement also work with service providers to assist these children who have been victimized," said Patton.

Nationwide, 150 pimps and other suspects were arrested and 149 sexually exploited children were recovered during "Operation Cross Country 9." More than 500 law enforcement officers participated in stings at hotels, casinos, truck stops and other locations known to be frequented by pimps and prostitutes.

The sting, which is in its ninth year, was spearheaded by the FBI, the National Center for Missing and Exploited Children and state and local law enforcement partners nationwide. "Operation Cross Country" is part of the Innocence Lost program. More than 2,000 pimps and other

suspects convicted and 4,800 sexually-exploited children recovered since the program's existence.

### Missouri to change data collection

The Missouri Department of Education will stop collecting students' Social Security numbers except when it has to have them, after a state auditor's review.

State Auditor Nicole Galloway looked at the department's handling of its Student Information System.

That system collects information from school districts for the administration of state and federal programs for students and for providing the public with feedback on district and charter school performance.

It found the department unnecessarily collected and kept personal information from students, including Social Security numbers.

"What we're saying is, collect it at the time you need it, and then don't collect it again, don't type it in the system again, don't type it in a spreadsheet and upload it to DESE's system again," said Galloway.

"Only do it when you need to because every time you do it, it creates an opportunity for it to fall into the wrong hands."

Galloway said the Department has agreed to collect only "absolutely necessary" information, destroy unneeded sensitive data from its systems, and to maintain the information it does need safely and securely.

It has also agreed to create policies for dealing with data breaches and to update its policy for recovering from one.



## "Romantic Getaway" in Kansas City

*Presented by Mountain Top Marriages*

Ready for a treat? Enjoy an elaborate "theme room" and relax in your own private two person Jacuzzi bath.

Enjoy complimentary chilled cider plus a full breakfast delivered to your room!

Then on either side of your romantic evening enjoy marriage teaching with Roger and Laureen Traver!



**Sunday and Monday  
Jan. 17 & 18, 2016  
Chateau Avalon**

Across from The Legends  
in Kansas City, Kan.

Just \$152 per couple for the  
complete package

Info: 913-780-3423 or 913-636-9481 • MountainTopMarriages.org



FOR YOUTH DEVELOPMENT®  
FOR HEALTHY LIVING  
FOR SOCIAL RESPONSIBILITY



**Rates include lodging,  
meals and many  
activities. Kids 5 and  
under stay FREE!**

## AN OLD-FASHIONED THANKSGIVING

**YMCA TROUT LODGE**

**November 23-29**



Every family has their traditions and many have made YMCA Trout Lodge their **Thanksgiving** tradition. Here's why:

- Over 40 year-round activities to keep you playing for days: Arts & Crafts, adventure, paintball, archery, riflery, mini-golf, horseback riding, hayride, nature center, hiking & MUCH more
- On Thanksgiving there's a turkey and trimmings on every table
- Stay 3 nights and get the 4th night free! (During Nov. 23-29)
- Rates always include lodging, meals and many activities
- Kids five and under stay free

Then on Saturday the 28th, step back in time as you stroll through our **Pioneer Christmas Village** and celebrate warm family memories of time spent together. CALL TODAY!

- Old-time crafts for the kids: candle-making, yarn dolls, popcorn garlands, ornament painting
- Demonstrations: Dutch oven cooking, branding, blacksmithing, apple press
- Storytelling by Father Christmas, carolers and more



**YMCA TROUT LODGE**

**888-FUN-YMCA • ymcaoftheozarks.org**



**Dennis R. Bacon, CPA, CFP®**

*Investment Management Consultant*

**Dana J. Schnelle, MBA, CFP®**

*Financial Advisor*

Financial planning is an ongoing process that should last a lifetime. We begin our client relationships with time...time spent getting to know you and your goals for the future. We build a trusting relationship with our clients that is based on clear and open communication. Then we equip ourselves to provide personalized investment guidance tailored just for you. We want you to feel confident in the future...knowing you have experienced advisors by your side.

**600 SW Jefferson, Suite 208  
Lee's Summit, MO 64063**

**www.BaconFA.com  
816-246-8450**

Securities offered through Raymond James Financial Services, Inc. member FINRA/SIPC

# Shoebox Drop-off Locations Announced for Kansas City Area

by **Dwight Widaman**

Kansas City-area churches, schools and businesses are busy filling shoeboxes for the 2015 Operation Christmas Child, a project of Samaritan's Purse. Kansas City, part of the Midwest Region Office of Operation Christmas Child, regularly donates a higher percentage of boxes in relation to population than other parts of the nation.

Though many organizations are behind the effort, there are countless individuals across the region who want to participate but may not know of a location to drop off their boxes.

Readers of Metro Voice are encouraged to participate to make this the best



year ever. Local collections will be Nov. 16-23 at one of the following Kansas City area collection locations. You do not necessarily need to drop off your

donations in your community if, for example, a church listed is near your work and you wish to do it on your lunch hour.

## Drop-off Locations

### Kansas

#### Kansas City

Haven Baptist Church  
3430 Hutton Road

#### Leawood

Calvary Chapel  
2251 Lamar Ave.

#### Lenexa

Lenexa Baptist Church  
15320 W 87th Street Pkwy.  
Mill Creek Community Church  
8151 Mc Coy Street

#### Mission

Old Mission United Methodist Church  
5519 State Park Rd.

#### Olathe

Prairie Center Church of God  
105 South Montclair

#### Overland Park

Christ Community  
14200 Kenneth Rd.  
Colonial Presbyterian Church  
12501 W.137th Street  
Emmanuel Baptist Church  
10100 Metcalf Ave.

#### Grace Church

8500 West 159th

#### Shawnee

First Baptist Shawnee  
11400 Johnson Drive

### Missouri

#### Blue Springs

Faith Covenant Church  
23300 NW Pink Hill Rd.  
Timothy Lutheran Church  
301 SW Wyatt Rd.

#### Excelsior Springs

Excelsior Springs Baptist Church  
1500 Rosalea St.

#### Independence

Noland Road Baptist Church  
4505 S Noland Road

#### Kansas City, MO

Forerunner Christian Fellowship  
3535 E Red Bridge Road  
Gashland Baptist Church  
601 NE Barry Road  
Northwest Bible Church  
6520 NW 64th St.

#### Raytown

First Baptist Church  
10500 East 350 Highway

#### Lee's Summit

First Baptist Church  
2 NE Douglas St.

#### Liberty

Pleasant Valley Baptist  
1600 N 291 Highway

#### Raymore

First Baptist Church  
116 S Washington St.

## Holiday Market

Saturday, November 14 • 9am-3pm

Come shop one of our many vendors! Original creations, apparel, gifts, candles, home décor, beauty products, jewelry, baby items, and more! Visit the Holmeswood Café and enjoy musical entertainment throughout the day! Booth space is still available. If you are interested, please visit [www.holmeswood.org](http://www.holmeswood.org) or call 816-942-1729.

Holmeswood Baptist Church - 9700 Holmes Road, South Kansas City, Missouri  
For more information, please visit [www.holmeswood.org](http://www.holmeswood.org) or call 816-942-1729

Bringing Christian Excellence to all the World

## BARCLAY COLLEGE ONLINE

- ❖ Biblical Studies
- ❖ Business Management
- ❖ Christian Ministry Leadership
- ❖ Psychology
- ❖ Associate Degree

Apply Online at [barclaycollege.edu/apply](http://barclaycollege.edu/apply)

**APPLY TODAY!**

[DistanceLearning@BarclayCollege.edu](mailto:DistanceLearning@BarclayCollege.edu)  
800.862.0226 - [www.BarclayCollege.edu](http://www.BarclayCollege.edu) - HAVILAND, KS

New Classes Begin Every Six Weeks

Bringing Excellence  
**To All The World**

## Good News. Great Joy.

SAMARITAN'S PURSE®

LEARN MORE AT  
[samaritanspurse.org/occ](http://samaritanspurse.org/occ)

**NATIONAL  
COLLECTION  
WEEK:  
November 16-23**



What goes into the box is *Fun...*

**What comes out is *Eternal!***

Every gift-filled shoebox is a powerful tool for evangelism and discipleship—transforming the lives of children and their families around the world through the Good News of Jesus Christ. Start packing today!

  
**Samaritan's Purse®**  
INTERNATIONAL RELIEF

Operation Christmas Child®  
is a project of Samaritan's Purse,  
Franklin Graham, President  
1-800-353-5949 | [samaritanspurse.org](http://samaritanspurse.org)

View solicitation disclosure information for Samaritan's Purse online at [samaritanspurse.org/disclosure](http://samaritanspurse.org/disclosure)

# KC Ministries Serving Homeless Need Your Help

Compiled by **Dwight Widaman**

## City Union Mission

City Union Mission director Dan Doty says that many of those they serve each day at the mission come from increasingly secular homes.



“They’ve had limited exposure, if any, to genuine Christianity and come with either no knowledge, limited knowledge or a distorted understanding of the Good

News of Christmas,” he states. “We begin early to emphasize to our special guests why we celebrate Christmas. We intentionally plan each event and dinner so as not to secularize it or cause our guests to be overwhelmed, but to stay focused on “the Reason for the Season.”

Doty says some of the ways they emphasize family during the Christmas season is to allow the dads in their Christian Life Program to shop for their children and the mission opens up a free Christmas store for families in the shelter and in the community to “shop” and choose special gifts for their entire family.

The mission is asking readers to again help this year as they provide special care to many in our community who need the encouragement and assistance that often results in a new or restored relationship with the Savior.

One such organization that has heard that call is a local Christian school. For the last several years, Maranatha Christian Academy in Shawnee, Kan., has challenged students, families and friends to help the mission during the holiday season. They collect canned food items prior to Thanksgiving to assist the mission with its upcoming winter food needs. In 2014 they collected 1,189 pounds of canned food, 150 pounds more than in 2013.

The mission needs your help to provide the items to prepare a Thanksgiving and Christmas dinner for less-fortunate families, senior citizens and lonely shut-ins. Here’s how you can help.

For the Thanksgiving meal, your donations from the list below will be boxed with a turkey in containers provided by All

Packaging and delivered to as many as 200 income-qualified households in time for Thanksgiving Day. Please deliver your items by November 16 to the Mission Food Warehouse/Distribution Center at 1020 E. 10th Street, Monday through Friday from 8 a.m. to 4 p.m.

Items needed include canned green beans and corn, coffee (ground/instant), fruit juice and toilet paper.

For Christmas, families who shop at their Christmas store will also receive a turkey and food bag with items to provide a Christmas dinner for a family of four. The bags will be delivered the day before Christmas, along with the gifts the family has chosen from the store. You can shop for the items below and place them in a heavy paper bag. Then deliver them by December 19 to their Community Assistance Center, 1700 E. 8th Street, Monday through Friday from 8:30 a.m. to 3:30 p.m.

City Union Mission needs 550 bags in all to ensure every family receives one.

Items include one 16-oz. box instant potatoes, two boxes stuffing mix, two packets gravy mix, two 15-oz. cans yams, one small bag marshmallows, one box pie crust mix, two 14-oz. cans green beans, one can cranberry sauce, one 15-oz. can pie filling and one package Crystal Light drink mix, plus a prayer card for the family.

## Family Promise of the Northland

The mission of Family Promise of the Northland is to assist families in crises due to homelessness. They provide food, shel-



ter, training and other assistance for families. Families are home-based in their day center where they have personal storage space, a personal bathroom with a shower, and a shared computer room, shared kitchenette, shared laundry facilities, and family room space. Each evening families are transported by van to a host church in the northland where church people provide meals and food for the next day, as

well as sleeping space. Families are transported back to the center each morning early enough to go to school and work or to seek employment and housing. Each Sunday, the hosting church changes and their families stay at a different church for the next week. They are limited to serving no more than 14 persons at a time because of space in the van. Families receive a lot of attention from Family Promise volunteers and receive professional training classes in budgeting and life skills in the church two nights of the week.

Churches have a wonderful opportunity of doing mission right in their own building.

Family Promise offers many opportunities for those who would like to provide food, work as a host or hostess in their own church, and provide support through sleeping in their own church during the nights. The organization prefers to work through churches. Would your church be able to provide hosting space and support for one week about four times per year? Training is required for all volunteers. Financial assistance for this program is always needed. Gifts of meals, volunteers, CDL van drivers, linens and towels for their families is also needed.

To understand this program better or if you or your church are interested in helping with Family Promise of the Northland, please contact Marilyn Gardner or Bridget Mendoza at (816-888-7070). For more information visit their website at familypromisenorthland.org.

## Kansas City Rescue Mission

Kansas City Rescue Mission (KCRM) invites the community to share their gratitude with our neighbors in need this Thanksgiving!

“As the need in our community increases steadily, we feel a responsibility to respond,” states Executive Director Joe Colaizzi. “In addition to the hundreds of men we serve each November in our dining hall, we want to reach out to those in need who simply can’t get to us for help. This outreach allows us to extend the ministry of KCRM right to people’s doorsteps.”

On Nov. 20 and 21, KCRM and its volunteers will team up with local churches to assemble and deliver 200 food boxes to struggling families living in poverty. Each

■ See **HOMELSS** page 5

steed to the speed limit.

My evenings are rich playing “tackle down” and “huddle up” with grandkids. For them football is a chase ‘em down sport. Not caring about the goal, they run in circles to see if they can “tackle down” Pop.

Then there are the books. Books that are solid to the grasp, books using the ancient art of print and ink. Or I may read by the light of a flickering screen, holding a library wherever I go.

Or, best of all, there may be a night watching TV re-runs and snuggling with my wife.

But more than all of the blessings, I love the Blessing-Giver. The God who made me, redeemed me and sustains me.

I am grateful for a scrap of paper and a pen to count blessings so that none of His gifts fall unseen to the ground.

# ’Tis the season to lend a hand

Each year Metro Voice provides a listing of organizations that serve the most vulnerable in our communities. Whether it is the single mom and her children, our elderly, the homeless or incarcerated, our readers respond with prayers, time, items and finances to keep these ministries going throughout the year. Below are the organizations that responded to our call for them to share their “Christmas Wish List”. God’s word says in 1 John 3:17: “But if anyone has the world’s goods and sees his brother in need, yet closes his heart against him, how does God’s love abide in him?” Let us all work together to show the love of Christ this Christmas and the coming year. Together, we can make a difference.

**ADVICE & AID PREGNANCY CENTER, INC.** Amber Lewis, director of client services. Two locations: 11644 W. 75th St., Shawnee, KS 66214; and Foxhill Medical Building, 4601 W. 109th Street, Suite 302, Overland Park, KS. 913-962-0200. [www.adviceandaid.com](http://www.adviceandaid.com)

Advice & Aid Pregnancy Centers serve families facing unplanned pregnancies before and after with Christ like compassion. You can be part of helping one of these families by providing financial support, new infant car seats, new breast pumps, new baby monitors, new pack-n-plays, diapers, gently used maternity clothes, winter infant/baby clothing and non-perishable food items. To volunteer, please email [volunteer@adviceandaid.com](mailto:volunteer@adviceandaid.com) to learn more.

## CARE OF POOR PEOPLE.

Richard G. Tripp, 910 Pennsylvania St., KC, MO, 816-721-3291. [richardgtripp@yahoo.com](mailto:richardgtripp@yahoo.com). [www.coppinc.com](http://www.coppinc.com).

Our mission is to save lives by providing the materials the poor and homeless of our community need to survive winter’s wrath. Throughout the year and especially during our two main events, we need volunteers, financial donations, clothing donations, hygiene donations, and cooked-food donations. Our two main events are the Survival Events always on the Saturday after Thanksgiving, and the Spring Break for the Homeless always the Saturday before Easter Sunday.

**CITY UNION MISSION.** Kansas City, MO 64106. 816-474-9380

Men, women and families who call the Hotline are directed to actual shelter housing when available space is known. Do you have items to donate? Contact City Union Mission at the phone number provided above to see if they can use any items you may have to donate.

**COLDWATER.** Monica Humbard, Executive Director. 501 NE Missouri Road, Lee’s Summit, MO 64086. 816-786-0758. [www.coldwater.me](http://www.coldwater.me)

Coldwater is seeking volunteers and food donations for twice-a-month Friends Day Food Pantry & Clothes Closet. Coldwater accepts financial donations to purchase food and is searching for churches/small groups to help

prepare/serve a hot meal on Friends Days. See the Coldwater website for current needed food items and program information.

## FAITH IN CHRIST TOILETRY/

**FOOD PANTRY.** John Jones, Pastor. 101 SW 21st Street, Oak Grove, MO 64075. 816-616-3160. [jjones57@yahoo.com](mailto:jjones57@yahoo.com)

Our food pantry is open every Thur. and Fri. from 5pm - 7pm. Serving eastern Jackson County and Lafayette County. We are always in need of financial donations and volunteers. Financial donations allow us to get more for your money by buying in bulk.

**FEED THE PEOPLE.** Jerry Whisler. Director. 816-507-6374, [feedthepeople@msn.com](mailto:feedthepeople@msn.com). [www.feedthepeopleministry.org](http://www.feedthepeopleministry.org)

The ministry has been going out onto the streets every Saturday for the past 22 years feeding the hurting and homeless right now were averaging between 375-450. We need the following: socks, gloves, scarves, wool knitted hats, chapstick/lib balm, blankets, toothbrush, toothpaste, cough drops.

## FELON WOMEN 4 CHANGE.

INC., 107 W 9th Street, 2nd Floor, Kansas City, Missouri, 64105, 816-912-6171. [staff.fw4c@gmail.com](mailto:staff.fw4c@gmail.com).

Please contact us if in any way you can be of assistance to us in our efforts to help transition women out of prison and into a more stable future.

Whether bound by drugs or institutions, domestic violence, many of the women in the program have first hand knowledge of the struggles that are faced, when in the throws of addiction and unhealthy living. In addition to donation of goods, we are currently seeking board members plus businesses that would be interested in working with us to employ and train women that are seeking employment. Our organization offers a bonding agreement with companies, this ensures that you are not only getting a high quality employee, but also gives you a great foot forward to not focus on the matters of the past!

## HELPING HANDS FOOD

**PANTRY.** Shirley-Cornwell, 11220 S. Alley-Jackson, Grain Valley, MO 64029 816-804-3511 [dclesson@yahoo.com](mailto:dclesson@yahoo.com).

The Helping Hands Food Pantry is a ministry of the Lone Jack Christian Church. It is a community supported, non-sectarian resource for residents of Lone Jack and the immediate area, providing food and some paper goods. We provide holiday boxes between Thanksgiving and Christmas for families identified by the Lone Jack School system. Non-perishable food and financial donations are requested to supply these boxes and to provide for our ongoing needs.

## HOPE.WRX FOOD PANTRY.

Judy Kelly, Exec. Director. 816-729-2095. Hillside Christian

■ See **MINISTRY** page 5

## WHY I AM THANKFUL

Rick Qualls - Chanute, Kansas

The dramatic doesn’t happen often at our house.

Ordinary events provide a feast of thanksgiving thoughts.

I am thankful for our two-year-old grandson’s sticky fingerprints on the glass door. I enjoy his slamming the screen door as he races in and out and in again.

I enjoy the most beautiful sunsets in the world, right here in Kansas.

My taste buds enjoy the local Mexican cuisine. But best is breaking tortillas with long time friends. Simple foods become a feast when gratefully shared with

best friends.

As I walk through my childhood home, empty now, the smells that linger take me back through the years. The walls of the empty house laugh with memories and stories. I recall the surprise puppy jumping out of dad’s lunchbox. And I loved mom’s pecan pie.

I appreciate owning our first house and forays into the joys of home ownership.

Yes, there are leaves in the gutter, sump pumps burn up, and weeds seed the garden. But we are richly blessed.

People who listen are rare. I am lucky to have many who share both my burdens and joys. Joys are doubled, burdens halved.

Being my second childhood, I love the growl of my muscle car. Though it rebels about being driven slow, I hold my



## MINISTRY

continued from page 4

Church, 900 NE Vivion Rd. Kansas City, MO, 64118.

Serving residents of Clay and Platte Counties. We are in need of food donations. Mainly non-perishable but will accept potatoes etc. We also have a school backpack program.

**KANSAS CITY RESCUE MISSION.** Julie Larocco, chief development Officer, at jlarocco@kcrm.org. 1520 Cherry Street, Kansas City, MO. 64108. 816-421-7643. www.kcrm.org.

Our greatest needs are winter wear for men—used and gently used. We also need Christmas gifts. Check website for complete list. We are accepting financial donations and food donations.

**THE LIGHT HOUSE.** Julie Karanja, Outreach Coordinator & Counselor. PO Box 22553, KCMO 64113. 816-361-2233 x213. juliek.lighthouse@mbch.org www.lighthousekc.org

Join with the LIGHT House in making the seasons bright for young moms who live at our Maternity Home and participate in our Outreach program! Gifts for moms, children and babies are needed. Additionally diapers, wipes and various baby items are needed on an ongoing basis, to support young moms who are choosing life for their babies!

**METRO LUTHERAN MINISTRY.** 3031 Holmes Street, Kansas City, MO 64109. www.mlmkc.org 816-931-0027

Wish List: Financial support for our ministry and programs; Volunteers for the Christmas store and our many other ministries; Non-perishable sack lunches for hungry students enrolled in our Learning to Earning Program; Small appliances for Christmas store gifts (ie., crock pots, electric skillets, toasters, etc.); King/queen size blankets for Christmas store gifts; Food donations (for the pantry);

**MOTHER'S REFUGE.** Robert Zomes, 14400 E. 42nd St., Suite 220, Independence, MO 64055. 816-353-8070. Kimberlee@mothersrefuge.org. www.mothersrefuge.org.

Mothers Refuge provides a loving home for homeless, pregnant and parenting teenagers. We are seeking individuals, groups, or families who are interested in adopting one of our residents and her baby for Christmas. These young women have little to no emotional or financial support when they arrive here.

**MT. CARMEL COMMUNITY OUTREACH MINISTRIES.** Kansas City, KS. 913-621-4111

Emergency Shelter Transitional Housing for Family. Do you have items to donate? Contact Mt. Carmel Community Outreach Ministries at the phone number provided above to see if they can use any items you may have to donate.

**RESTART INC.** Kansas City, MO 64106. (816)472-5664

Emergency Shelter Nights Only. Offering a full range of services for Kansas City's homeless men, women, youth, and families, reStart provides everything from emergency overnight shelter to transitional living and permanent housing. Equipped to handle all persons, including those with special needs.

**THE SALVATION ARMY.** 3637 Broadway, Kansas City, MO 64111. 816-756-1455. www.salarmymokan.org

For 125 years, The Salvation Army's Red Kettles have represented the love, hope and compassion of the Christmas season. Your donations help change lives in our community! For more information about The Salvation Army, to volunteer or to donate online, go to www.salarmymokan.org.

**THE SHEPHERD'S WAY MINISTRIES, INC.** Shirley McNeall/executive director/ founder, PO Box 1833, Lee's Summit, MO 64063. 816-525-2932. theshepherdsward@att.net. www.shepherdswardministries.org

Sharing the gospel of Jesus Christ with incarcerated and raising money for future women's home. Needs: financial donations, property with home and three or more bedrooms in rural area; volunteers, grant writers; volunteers interested in working with women who have been incarcerated.

**SISTERS United of Kansas City.** Chanae Williams, Community Relations Coordinator (President), 816-388-0013, sistersunitedofkansascity@gmail.com, www.sistersunitedofkansascity.org

We need mentors to build stronger young women which will produce stronger families within the urban core of Kansas City. S.I.S.T.E.R.S. United of Kansas City (SUOKC) will teach young women how to build and maintain healthy relationships through self acceptance by building self esteem and valuing their self worth.

**UPLIFT ORGANIZATION, INC.** P.O. Box 270175, KCMO 64127. 816-241-0060 www.uplift.org

We serve approximately 600 people per week on the streets of Kansas City. In the winter months we need boots, sleeping bags, blankets and candles. Please consider helping us to continue reaching out to those who have nothing by donating these items or a monetary donation. See other volunteer opportunities for Uplift at www.uplift.org

**VINEYARD CHURCH.** Carla Beason. 816-734-8100. cbeason@vineyardkcnorth.com. 12300 NW Arrowhead Trfy, Kansas City, MO 64165.

Serving the Northland. Last year over 1,100 people volunteered their time, 6,600 families were fed through the food pantry, 2,200 kids were given back-to-school supplies and Christmas gifts. 2,000 Thanksgiving and Christmas meals were given away to local families. We are in need of volunteers, food and hygiene donations.

## HOMELESS

continued from page 4

box contains the ingredients for an abundant Thanksgiving dinner with plenty of leftovers. Then, Thanksgiving morning, KCRM volunteers will deliver 500 piping-hot Thanksgiving dinners to the homes of elderly, disabled and often isolated individuals who would otherwise go without. With each box and meal, we'll include a handmade card that shares the message of the love of God.

From Nov. 21 through 29, nine churches and other groups will provide



special dinners at the KCRM Men's Center during their nine-day Celebration of Thanks! Then on Thanksgiving Day, KCRM is planning to serve a traditional Thanksgiving feast at lunch and dinner.

Can you help provide food for their Thanksgiving meals? Here's a list of needed items: turkeys, hams, Stove Top-type stuffing mix, boxed instant potatoes, packaged gravy mix, canned corn, canned green beans, canned fruit, canned cranberry sauce, canned yams or sweet potatoes, brown sugar, 1-lb. butter in tubs or sticks, cake mixes, canned frosting, Bisquick, brown and serve rolls, pumpkin and fruit pies: pre-baked, and Jello.

"We are privileged to extend our reach out into the community during the holidays," said volunteer coordinator Kristen Ray. "Thanks to our generous donors and volunteers, we have an opportunity to really make a difference in people's lives!"

For more information, to donate or volunteer, contact Kristen at kray@kcrm.org or call 816-421-7643.

### Salvation Army

The Salvation Army's 2015 Red Kettle Campaign in Kansas City kicks off Friday, Nov. 6, and continues through Christmas Eve, every day except Thanksgiving Day and Sundays. This year, volunteers will be ringing bells at more than 250 locations in the metropolitan area.

2015 brings a new opportunity for Kansas City to donate to the issues and causes that they care most about. The Red Kettle Gift Catalog is now available and online at www.RedKettleGifts.org.

"By giving life-changing gifts from this catalog in honor of your loved ones, you can be the good that lifts up a neighbor who has fallen," said Major Evie Diaz, divisional commander of The Salvation Army in Kansas City. "These donations will help us provide food, clothing and shelter to people in need in their own community throughout the year and during the Christmas season."

The money collected during the Red Kettle Campaign supports a number of Salvation Army programs in the area including emergency rent and utility assistance, homeless services, youth and senior programs, substance abuse services and disaster response.

"Every cent dropped into a Red Kettle allows us to meet the on-going and ever-



increasing demand for the services we provide," Diaz said.

Locations to serve include:

■ 6111 East 129th St., Grandview, MO – 816-966-8300

■ 14700 East Truman Rd., Independence, MO – 816-252-3200

■ 6723 State Avenue, Kansas City, KS – 913-232-5400

■ 420 East Santa Fe, Olathe, KS – 913-782-3640

■ 3013 East 9th St., Kansas City, MO – 816-483-8484

■ 6618 East Truman Rd., Kansas City, MO - 816-241-6485

■ 5306 N. Oak Trafficway, Kansas City, MO – 816-452-5663

■ 500 West 39th St., Kansas City, MO – 816-753-6040

The Salvation Army is also seeking volunteers for other programs including Project Warmth and Community Care Visitation. You can volunteer for these programs by calling Jane Sander at 816-968-0396.

Anyone wishing to donate by credit card may call 1-800-SAL-ARMY or go to www.salarmymokan.org or donate online at www.onlineredkettle.org. Checks may be mailed to The Salvation Army, P.O. Box 412577, Kansas City, MO 64141.

### Uplift Organization, Inc.



The Uplift Organization is now in their 25th year of service to the homeless, and serves approximately 600 people per week. Uplift volunteers are a diverse group of individuals united by the com-

mon desire to show care for, and serve individuals in need. Uplift's mission: "We, who acknowledge God's providence and fidelity to his people, especially those in poverty, do dedicate our efforts toward the support of those who are homeless. Our goal is to deliver to the homeless those basic human needs, care and compassion that are not usually received from other organizations."

The organization's purpose is simple: deliver hot food, basic clothing, hygiene and miscellaneous supplies to the homeless individuals living under highway bridges, in abandoned buildings, camped along wooded areas following the Missouri River, and various other areas of our city. They operate out of a modest distribution center located at 1516 Prospect, Kansas City, Missouri 64127.

Their Sprinter delivery vehicles are the work horse of the operation and are a familiar sight on the streets of Kansas City each Monday, Wednesday and Saturday. The outreach support they provide carries on due to the generosity of the Kansas City community.

"We do not receive State or Federal funding," stated Kathy Dean with the organization. "We are 100 percent volunteer. From our board of directors and leadership team to the individuals coming to experience Uplift for the first time, we have no paid staff."

Dean says there are several ways you can contribute to help Uplift's cause:

■ Schedule a time to deliver food on the trucks by contacting Volunteer Coordinator, Jo Bustamante at 816-589-2452.

■ Become a cook: prepare meals by contacting Cook Coordinator, Margo Yerk at 816-516-1304.

■ Volunteer on the second Saturday of the month to help clean and sort donations from 9 am – 12 am. Although making a reservation is not necessary, larger groups are encouraged to contact us with the anticipated size of your group.

■ Donate your gently used items. Visit uplift.org for needs.

■ Contribute financially: Your donations go directly to funding their daily operations and supplies that they do not receive from the community.

For information call 816-241-0060, email upliftorg@att.net or visit uplift.org

# FeedKCNow.org

"Where hunger ends, HOPE begins."

Visit FeedKCNow.org

**CITY UNION MISSION.**  
YOUR CITY. YOUR MISSION.

**DAYTON MOORE**  
General Manager  
Kansas City Royals



Bringing hope  
to families  
across Missouri  
through  
adoption.



**LfCS** *growing hope*

Lutheran Family and  
Children's Services of Missouri

Mid-Missouri Office  
401 West Boulevard North  
Columbia, Missouri 65203  
573-815-9955

Toll Free  
866-326-LFCS (5327)

24-Hour Pregnancy Services Hotline  
417-268-8997



## Kansas City churches answer the call to help children in foster care

Churches throughout the Kansas City metro area have been actively engaged in helping children and families involved with the child welfare system, including thousands of youth who have experienced abuse and neglect and are in caring KVC foster families.

Westside Family Church in Lenexa, recently donated over 500 suitcases and duffel bags for children in foster care. Instead of moving their clothes in trash bags, children and youth will have the opportunity to select a piece of luggage and move their belongings with dignity.




*Loving Life*

Mother's Refuge gives teens an opportunity to deliver their babies in a safe, loving home and prepares them for a life of independence and success.

phone 816.353.8070  
to support life, moms and babies give at [www.MothersRefuge.org](http://www.MothersRefuge.org)  
mailing address • office  
14400 E 42nd St. S., Ste 220  
Independence, MO 64055

**MOTHER'S REFUGE**

f t



**CALL US: 816-380-4885**

[www.alternativesclinic.com](http://www.alternativesclinic.com)

307 W. Washington St.  
Harrisonville, MO 64701

**Unplanned Pregnancy?**

**You have options.**

**You deserve all the facts so you can make an informed decision.**



**Pregnancy Tests & Verifications ■ Limited Obstetrical Ultrasound  
■ Options Counseling  
NO COST TO YOU ■ COMPLETELY CONFIDENTIAL**

Other churches across Kansas have opened their doors to provide space for TIPS-MAPP training, which is a program that prepares new foster and adoptive parents to care for children in foster care. Faith communities have also provided space for support groups and ongoing trainings for resource parents. West Haven Baptist Church, located in Tonganoxie continues to host ongoing trainings for foster parents and supports families with clothing and other necessary items.

Families of faith can also assist with healthy spiritual formation in children by giving them an opportunity to be physically, emotionally and socially healthy, on target intellectually and to be morally and spiritually healthy.

How is your family community being called to help? Learn more about at [kansas.kvc.org](http://kansas.kvc.org)

# Faith, patience helped complete Cooper family

by Josh Cooper

My name is Josh Cooper. My wife, Jaclyn, and I live in Topeka with our four “minis” (as we like to call them), and this is our adoption story. Jaclyn comes from a large family - that is, large compared to mine. I grew up in a household of four. Jaclyn, on the other hand, not only has two biological siblings, but two adopted sisters from the Philippines. Jaclyn’s biological sister also adopted a girl from Guatemala

nine years ago, so adoption was a familiar and accepted part of Jaclyn’s life.

The idea of adopting was something we were both open to from the earliest days of our relationship. But it wasn’t until after our youngest, Abigail, was born in 2009 that we felt it was in our best interest not to have more biological children due to increasing difficulties related to pregnancy. This was a tremendously hard decision for us to make, because we both knew in some way that our family was not complete.

Through a combination of things happening in our lives – sermons we heard, books we read, meeting other adoptive families – we felt as though God was both “pushing” and “pulling” us to adopt. The push was to take greater risks to advance God’s kingdom on earth while the pull was a tug on our heartstrings as we learned more from friends caring for orphans in Lesotho, Africa. In July 2011 we went for it! We decided to move forward with adopting a boy from Lesotho, Africa.

To make a long story short, after 18-months of waiting for a referral, something unexpected happened which forced us to choose between what we thought were two bad options. Lesotho was temporarily closing adoptions to America in order to reform its international adoption process. We could choose another country or we could wait, but possibly never re-



ceive a referral. We were trusting God with the right child to be matched with us at just the right time and after many conversations and prayer, we walked away from our investment in a potential match in Lesotho. But God never walked away from us or from our future son.

We started over from scratch with a new adoption agency and a new country - Ethiopia. We were the 47th family on the official wait list with an estimated 9 to 12-month wait to receive a referral. Slowly over the next 18 months we would climb up the wait list before we received “the call” from our agency.

But then, much to our surprise, the call

■ See COOPER page 17



**From Heart to Home**  
Infant Adoption Program

An adoption agency you can trust.

For over 120 years, adoption has been a core service throughout KCSL's history. Let us help fulfill your dream of having a child.



**Kansas Children's Service League**  
877-581-5437 • www.kcs.org

**6522 Kansas Children in Foster Care**  
*Each child needs a safe, stable, loving home like yours*

**Churches in Kansas**  
*What are you being called to do?*

Please sponsor a child in foster care during this holiday season by donating gifts and gift cards.

**Contact:** Jackie Harwig  
Community Resource Specialist  
Phone: 913-956-5319



**KVC**  
Kansas  
*people matter*

**Become a KVC Foster Parent**  
1.888.655.5500 | www.kvc.org

**Families Make the Difference**

Every child deserves to grow up in a safe, nurturing environment. When a child's family is not able to provide for that child, a foster or adoptive family can. You can make a difference by becoming a “family” for a hurting child. You can also make a difference by providing support for foster or adoptive families.

MBCH Children and Family Ministries and its affiliate The LIGHT House offer a variety of Christian foster care and adoption services.



**THE LIGHT HOUSE**

**MBCH CHILDREN & FAMILY MINISTRIES**

For information call 800.264.6224 or visit us at [www.mbdicfm.org](http://www.mbdicfm.org)

**BOYS TOWN**  
Nebraska Homes

**“WE JOINED THE TOWN AND GAVE MICHAEL HIS FIRST REAL HOME.”**

**Family-Teaching Couples Help Kids Picture a Better Life**

**Boys Town Offers:**

- Extensive training and support
- \$50,400/year plus excellent benefits package
- Rent free, utilities paid, and company vehicle
- Nationally recognized program
- The opportunity to change the lives of youth
- Earn college credit while you work

For more information visit [boystown.org/careers](http://boystown.org/careers) or contact [btrecruiter@boystown.org](mailto:btrecruiter@boystown.org) today!

**Join the TOWN**



# Enjoy the rewards of foster parenting through KVC

## Returing glory

Fostering a child has all of the challenges and rewards that come with parenting your own child... and more! We invite you to become a foster parent through KVC. We care for more than 3,000 children in foster care across 30 counties in eastern Kansas. We are always looking for compassionate families to join our mission to enrich and enhance the

lives of children in need. Make a difference in a child's life!

Although there are many reasons why children or youth are placed in foster care in Kansas, the most common is physical neglect and abuse (Kansas Department for Children and Families, 2013). Once a child is placed in foster care, KVC assigns a case manager who works with the family

to identify family members and other interested parties who form a group to strategize, create a plan and coordinate care for the child, with the ultimate goal of achieving a safe and permanent home. Our foster parents play an important role in helping children maintain relationships with their families so they can eventually reunite.

You can make a positive difference by fostering a child or teen through KVC. By becoming a foster parent, you are opening your home to a child in need and providing a dependable, nurturing environment. This can be a challenging task, so KVC goes to great lengths to provide families with resources and training necessary to successfully integrate a child into your home.

For more information, call (913) 499-8100 or visit [www.kansas.kvc.org](http://www.kansas.kvc.org)

## Christian Family Services: Trusted resource for all types of families

"Trustworthy: able to be relied on to do or provide what is needed or right, dependable, reliable."

For over 30 years, Christian Family Services has been that trustworthy resource for both birth and adoptive families.

■ See CFS page 9



**FOSTER FOSTER FOSTER**  
*hope love care*

**TFI Family Services**  
[t.tifamilyservices.org](http://t.tifamilyservices.org)

**CONSIDER FOSTERING TODAY**

**BE THE ONE**  
TO CHANGE A LIFE

**Youthville**  
[youthville.org](http://youthville.org)



**Christian Family Services**  
"Helping Children and Families Find a Better Life"

**Considering Adoption?**

- Learn your options from a trusted source
- Supportive services for both birth parents and adoptive parents
- Licensed and Hague accredited for those needing home studies-both domestic and international

Serving KS and MO for over 30 years

913-383-3337 ♦ [www.cfskc.org](http://www.cfskc.org)  
[susan@cfskc.org](mailto:susan@cfskc.org)



**Compelled by Christ to Rescue & Restore young lives**

**Show-Me serves as an alternative to state-based foster care offering Christ-centered:**

- Homes and families
- Individualized education programs
- Professional counseling & therapeutic services
- Ongoing support for young people as they transition into adulthood

**Map of Missouri locations:**

- Hubble Home, Galt, MO
- New Life Unit, Mayview, MO
- Knob Noster Unit, Knob Noster, MO
- Main Campus, La Monte, MO
- Drysdale Home, Barnett, MO
- Emerald Ranch, Goodman, MO
- Main Campus, Satellite Home

**Show-Me Christian Youth Home**  
660-347-5982 | [www.showmehelpingkids.org](http://www.showmehelpingkids.org)

# Much more to adoption than simply transferring parental rights



**CAROLINE BAILEY**

Supervisor with  
Missouri Baptist  
Children's Home

**muchmore**

Adoption: The act of transferring parental rights and duties to someone other than the adopted person's biological parents (Concise Encyclopedia/Merriam Webster)

I ran across this definition of adoption when doing some research. It seems so simple; too simple. It doesn't take into account the emotion, waiting, persistence, patience, grief, giving, receiving, love, and joy that travel along the way toward adop-

tion, and it certainly doesn't describe life held after adoption. It is so much more than just transferring parental rights.

Adoption is hope. It is commitment. It is patience. It is waiting. It is grief. It is joy. It is giving. It is love. It is receiving.

I gave myself away to my children before they were legally mine. I did not wake up the morning of their adoptions and discover new-found love based on transfer of parental rights. I dreamed of them. I yearned for them. I grieved for them. My soul grasped for them. My imagination sculpted them. Truthfully speaking, I loved them before I even met them.

In return, I received so much more than the legal status of being called mom. I

have been given the chance to push a little harder to make the world better for them. I have been awarded the opportunity to imprint their lives with love. I have received living, breathing, laughing, joy.

I have received those moments of feeling full well the Lord's penmanship of my life. I see the Lord in my children's eyes. I feel Him in their embrace. I hear Him in their wonder of the world. I still remember being that girl who didn't know when or if I would ever be healed from the pain of barrenness. I still think about her and who she used to be. I still grieve at times for what she went through and for the pain she carried through the years. But then....I look at my children, feel His

presence, and know full well that I am healed.

Adoption deserves so much more than a legalistic definition. It is defined by the path that one walks – whether birth parent, adoptive parent, or adopted child. It is shaped by the loss along the way. It is refined by the waiting. It is colored by the emotion and highlighted by the joy. It is enhanced from the giving, and humbled by the receiving. It is love in action, hope in process, and life lived in the full awareness of Him.

Yes...adoption is so much more.

*Caroline Bailey is an adoptive mom and supervisor with Missouri Baptist Children's Home.*



## CFS

continued from page 8

lies. Adoption is a life-changing event and often a frightening prospect when not much is known about it. Birth-parents are always treated in a non-pressured, warm and supportive manner that respects the tough decisions they are facing and honors their commitment to make a good plan for their baby. If adoption is the choice they believe is best, they can choose and meet the adoptive parents and decide what type of ongoing relationship they want.

Caring support to birth parents doesn't end at placement but continues long after if desired.

To adopt a child also requires much



consideration. Fears are normal but with education and support and reminders that God is ultimately the designer of their family, adoptive parents can safely navigate their journey to

parenthood as well. CFS received Hague accreditation in 2012 and this allows us to provide home studies and post-placement supervision for international adoptions as well. Many families have listened to the call to care for the orphan and have seen

God enrich their families with children from the United States but also all over the world.

What is God calling your heart to do? We strive to keep our fees low and rely on the generosity of Christians to keep our ministry funded.

We have tax credits available to Missouri taxpayers and all donations are tax deductible. Your donation blesses our ministry and allows us to be the hands and feet of Jesus as we strive to show His love to those in need.

Our annual fundraising dinner is November 5 at 6 p.m. at the Double Tree Hotel in Overland Park. Please RSVP to Shelley@cfskc.org or call 913-383-3337. Donations can be mailed to 8249 W. 95th St. Ste 107, Overland Park KS 66212.



Where every human heart is cherished...  
within the womb and within strong families

RSVP Appreciated:

call 816-361-2233 or

e-mail russellm.lighthouse@mbch.org

## YOU ARE INVITED TO A CELEBRATION OF OUR 30TH ANNIVERSARY!

For 30 years, The LIGHT House has...

- Provided Christian love to young ladies experiencing unplanned pregnancies
- Protected the lives of the unborn
- Facilitated adoptions by Christian families
- Offered on-going support to young mothers

For 30 years, The LIGHT House has...

- Been lifted up in prayer by the Christian community
- Received the financial support of Christian individuals, churches and organizations
- Been served by dozens of volunteers

Will You Celebrate 30 years of ministry with us?

- Come & Go reception
- Short inspirational program at 3:00 p.m.
- Let us say "thank you" for your support.

**SUNDAY, NOVEMBER 8 2:00 – 4:00 P.M.**

**WORNALL ROAD BAPTIST CHURCH,  
400 WEST MYER BLVD, KANSAS CITY, MO**



# RETHINKING ADOPTION



**D.C. JEANES**  
Metro Voice  
columnist

## ourstory

We found out, recently, we are closer to finalizing our adoption than we thought. While currents of excitement shot through our household, and we joyously shared the great news with our family, friends, and co-workers, it became increasingly clear I had no real idea what to expect.

Kristie and I have been married almost two decades, as of October. We talked early on about children; how many we'd want to have, how far into our marriage we wanted to have kids, whether we wanted to adopt or not. It was clear, early on, we both had a desire to adopt. It was also "obvious," early on, we'd never be able to afford such a process. Funny how God can turn our wisdom on its head. It's also funny how He can take some of the most difficult times in a person's life and mold them into the most precious.

We were married for about seven years when we came to a realization birth children may not be a possibility. We were young, emotional, and found ourselves lost in the woods of doubt. We visited doctors, we prayed, and we waited. Finally, we talked – for the first time in a very long time – about adopting. We decided, perhaps, this was what the Lord had in store for us, after all. Ironically, about a month after going to our first adoption agency meeting (just to get details and learn more about the possibility), we were told we could expect our first biological child in nine months. Wow!

Now, ten years later, and after having number two a few years after our daughter, we are finally nearing the end of the next long journey we've been on for the last five years; finalizing our adoption. We are awaiting news about another brother and sister; a pair we get to speak with every week, via modern technology (sometimes modern technology really is nice).

The oldest is a teenager. The younger is only about two weeks older than our biological daughter. We have made mistakes along the way, and we've eaten some long-dead crow making amends, but we believe it was worth the struggle. From mistakes we learn new lessons.

This brings me to the realization I do not know what to expect. We've done the classes, we've gotten training, we've even spent a lot of time the last few years in a small country in Africa; the country our children are coming from. It's been amazing, scary, emotional, and challenging. It is a beautiful country, with beautiful people, but it's also had a bloody history and the culture still reflects this. Our kids have lived in an orphanage most of their lives, run by Christians committed to allowing them to know the Gospel and live in a more civilized environment. At the same time, they live



in a third-world country, surrounded by other children; some of whom have been abused in ways I don't want to think about.

Am I ready for this? Are we, as a fam-

ily, ready for this? No.

I hear people mention often God selects special people to raise special children. Our firstborn, our daughter, was

■ See JEANNES page 17



**Unplanned Pregnancy Solutions**

**Medical**

- Free pregnancy test & ultrasound
- Medical info & referrals
- Pregnancy options counseling

**Education**

- Parenting & life skills
- Sexual integrity
- Pregnancy & fetal development

**Support Services**

- Adoption referrals
- Post abortion counseling
- Grief counseling
- Community referrals
- Cribs, diapers, clothing, & supplies

**The Women's Clinic of Kansas City**

Call 816.836.9000 for more information!

TheWomensClinic.net  
Independence: 815 N. Noland Rd. | Grandview: 11904 Blue Ridge Blvd.

Volunteer positions available!

## Missouri Right to Life Western Region

Our Mission is to protect life from conception until natural death. We do this by education, legislation and activation.

9504 E. 63rd St. Suite 103

Kansas City, MO 64133

816-353-4113

[www.mrlWesternRegion.org](http://www.mrlWesternRegion.org)

### January 22nd

March for Life Washington, DC

Prayer Vigil

Federal Courthouse, KCMO

Noon to 1:00 pm

### Annual May Golf Tourney

13th Annual Golf Tournament

Watch for details!



**Alpha Christian Children's Home & School**  
[www.alphachristianchildrenshome.com](http://www.alphachristianchildrenshome.com)



**WHAT WE DO:**

1. Share Christ to offer hope and healing
2. Provide a Christian family safe haven
3. Help the kids get caught up in school

**HOW YOU CAN HELP:**

1. Pray
2. Volunteer
3. Refer children to us
4. Give money or food to help us serve kids at no charge

**In His Hands**  
Alpha Christian Children's Home

Find out more by calling  
**785-597-5235**  
Located an Hour W of KC  
15017 27th Street  
PO Box 727  
Perry, Kansas 66073

Every child deserves a loving, caring home. A family they can call their own. A place where they belong. With people who will be there for them always.



**Adopt Kansas Kids**

[www.adoptKSkids.org](http://www.adoptKSkids.org) • 877-457-5430

Adopt Kansas Kids works to connect foster and approved adoptive families with children throughout Kansas who need adoption. This service is provided by the Kansas Children's Service League through a contract with the Kansas Department for Children and Families (DCF).

Missouri Baptists.  
Partnering with you...  
for *life*.



The Missouri Baptist Convention's Christian Life Commission and *The Pathway*, the official newspaper of the Convention, are proud to work side-by-side other Missourians in the effort to promote adoption and foster parenting.

# Planning your own trip to Israel



## Deciding what type of tour is right for you

By Anita Widaman

Alexander Graham Bell said “Proper preparation prevents poor performance.” It can also be said that proper preparation ensures a great tour of Israel.

The first decision is whether to go on your own or be part of a group. Most people who have been to Israel were happy that they went on a group tour the first time. Moshe Henzel, a licensed guide of 22 years, said “The land of Israel is so small but so much to see, do and experience. Group tours are easier for first time visitors because the plan is set.” Paula and Steve Guernsey, former residents of Kansas City agreed, “You don’t have to worry about anything. You don’t have to plan, think, or make a decision—except maybe what to have for lunch.” Guernsey said that when traveling as an individual, you do have more power in deciding what you will see. He reflects, “You have to balance comfort and convenience, for the surprises that comes from going off the beaten track.”

The next decision if you do want to travel in a

group is what group to join. Sharon Moore who has traveled solo and in a group explains how she reached her decision.

“I toured with an organization that I liked and supported. I knew that the organization was honored in Israel and America”, she says. “People going on tours are going to have a ‘perspective,’ so go with a group that you agree with. The more like-minded the people are, the more peaceful and more can be accomplished.”

After people attend one tour, they find that they want to return to Israel. Some may return as an individual because they feel comfortable touring on their own. Others may want to join an “A Go Beyond” tour (AGB). The Guernseys decided to join this type of tour after living in Israel for 10 years. Paula states that on the AGB tour, “We visited a lot of sites connected to the history of Israel, rather than the Christian holy sites, as well as nature and archaeological sites. We touched on nearly every era of the history of the land.



We made friends with this couple from Africa who were also on a Holy Land tour

The best part was that we often spent time in prayer and we met leaders of local messianic congregations. We had expert speakers in the evening that addressed topics such as anti-Semitism.”

A great way to tour Israel is to tour with your family. David Cole, lead pastor at Oak Tree Church in Lee’s Summit, has been to Israel two times on a tour and 16 times on mission trips. Cole toured Israel this summer with his wife and five sons, ages 5 – 16, and shares several tips. First, he said, make sure they are

reading the Biblical stories beforehand.

“I want each one to understand and remember what we are seeing,” he said. “There was prep work before we went! I also went with five boys so— I made sure they had good rest and ate well. I knew I needed to slow down and go at a good pace. Make sure they have fun. Also be sure to meet the people.”

Cole recommends tourists attend a messianic congregation on Sabbath when tourists are usually on their own. He also suggests when in Israel to be a “server, not a consumer only.” There are ministries that will connect you to serving in orphanages, planting trees, or assisting Holocaust survivors.

There are many ways to tour Israel. The Ministry of Tourism’s website, [www.goisrael.com](http://www.goisrael.com), provides itineraries for religious tours for 4 – 10 days, but also itineraries concentrating on the environment, food, culture, ethnic communities and more. Kathleen MacPherson, who has traveled in Africa and Europe, stated, “I love to challenge myself physically so I chose a hiking group. It was hard because it was too hot! But hiking through the desert made me understand how

■ See TOUR TYPES page 12

## Traveling means a little homework

By Dwight Widaman

As with any trip overseas, it’s always a good idea to study-up on your destination. That’s especially true when taking teenagers or young adults to the Holy Land-Israel.

For many visitors, especially young people, the names of cities and historical places in Israel sound as if they were penned by J.R.R. Tolkien for an epic novel of Middle Earth.

The Israeli town of Esdraelon could easily have been the stomping ground for Eragorn, the mysterious protector of Middle Earth. The Elves may have inhabited En-Dor and perhaps Analoth was the summer residence for the king of the mighty horse people—the Rohirrim.

But Esdraelon, En-Dor and Analoth are not scenes in Tolkien’s mythical world of The Lord of the Rings. They are real places in the Holy Land. They are real

on-site locations of the greatest story ever told—the Bible. And the best efforts of history’s most talented writers, like Tolkien, could not compete with the reality of this narrow strip of earth that continues to be the focus of humanity’s attention. That makes Israel exciting and fascinating!

Of course, most young people, and even adults, have a rudimentary understanding of the story of God’s people and the Bible’s major characters. Adam and Eve, Moses, Jonah, King David, Ruth and of course Jesus and the disciples are familiar characters on Sunday school felt boards. But developing a greater understanding than simply what you remember from Sunday school will make your time in the Holy Land much more rewarding.

### Understanding the Times

For one, the story of the Bible spans 6,000 years. An easy way to help organize what you’ll experience is to think of a simple timeline: Old Testament; The Roman occupation of Israel which includes the life of Jesus and first three centuries of

Christianity; The Byzantine Era; and then the Crusader/Muslim Era. Add to that modern Israel, and you have five fairly distinct layers that you will peel back to view.

### DVDs and Books

There are numerous resources to help you go beyond a typical understanding of Israel. One of our favorites was a series of DVDs called “Drive Through History: Holy Land” produced by Coldwater Media and distributed by Zondervan. Host Dave Stotts, revs up his little Fiat for a fast-paced cross-country road trip that presents history and theology in a fun, quirky, yet very informative way that is easy for all ages to understand. It’s not light on insight, though. Titles include: “Egypt to Qumran: Covenants, Kings and the Promised Land” as well as “Bethlehem to Caesarea: Miracles, Messiah, and the Roman Empire.” Each 90-minute DVD also includes a PDF for use in group or family studies and is perfect for pre-trip organization and planning. Order it at [ColdWaterMedia.com](http://ColdWaterMedia.com).

Our first story in September listed several movies and documentaries that cover more recent Israel history. From the movie “Exodus” (also a New York Times bestseller) to “Six Days in June: The War that Defined the Middle East”, you’ll have plenty of films to help you get started.

While the DVD series will definitely hold the attention of any age, adults should consider “The Land and the Book” and “Jesus and the Land” both by Charles R. Page. While secular, they are well respected resources.

For a view of current events consider “Land for Peace: A Century of Failure” by Rani Levy and available on Amazon. Levi was an advisor to Ariel Sharon and his book looks at Western policies and how they have shaped Israel.

■ See Times page 12

## LODGING: Stretching Your Shekel

By Anita Widaman

During the snow and ice storms that visit Missouri during January and February, there are two activities that many do. We first look at seed catalogs and dream of what to grow in our garden. The other is surfing the internet for vacation spots and finding one to meet our budget!

After airfare to Israel, lodging is your next largest expense. Americans travel with a multitude of options and price ranges in the U.S. However, in other countries these options are available but at a much higher cost. This is true of Israel as well.

“Israel is not cheap!” Hanna Ben Haim, an Israeli tour guide for 16 years told me.

In Israel, there are many 4-and 5-star hotels. The Inbal in Jerusalem and Dan Panorama in Tel Aviv are examples of two hotels that cater to groups and anyone would want to return. They are beautifully decorated, the staff impeccable, and provide all the services that American travelers are familiar with. Many tour hosts will only stay at 4/5 star hotels because of Americans’ comfort level.

However, if you have previously traveled and are ready for an adventure, other options are available that will help your vacation budget. The key to selecting lodging is to ask others who have toured, visit the lodging website, and determine what comfort level and services you desire and are willing to pay.

**Kibbutz Hotel.** Kibbutzim are part of Israel’s history. A kibbutz is originally a communal farming settlement that has diversified in today’s modern economy.. As a result, many kibbutzim offer hotel accommodations to both large groups and individuals. Rich Hastings who has led tours to Israel, tells groups that “My favorite hotel on a kibbutz is Maagan Kibbutz—it’s like a Lake of the Ozarks resort. You walk out of your room and you can put your feet in the Sea of Galilee.” Paula and Steve Guernsey, who ex-

tended their group tour to see additional sites that were not included on the tour, choose the hotel at Yad Hashmona. Yad Hashmona was founded as a collective village by Christians from Finland who wanted to help the Jewish people establish their homeland. The cabins have Finnish architecture. It is 20 minutes outside of Jerusalem with beautiful gardens. Other kibbutz hotels offerings are a click away. Others to be considered are Gevulot in the Negev or Ramat Rachel near Jerusalem.

**Christian Hospices.** These are simple accommodations. Sharon Moore, who returned to Israel on her own after touring with a large group, spent her evenings at the Advent House.

“It was an easy, short walk to the Jaffa Gate. Although the room was small, it was clean and simple with a shower, desk, bed, and phone,” Moore shared. “I felt very secure and the hosts provided so much help.”

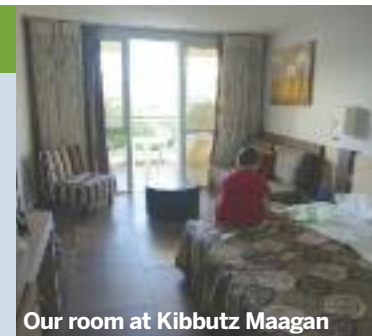
Another example of Christian hospice is the Christ Church Guest House in the Old City. Hastings said it is a simple lodging. “You can see everything and walk to everything from that spot. That’s my favorite place to stay in the whole world.”

Another popular facility is over 200 years old. The Lutheran Guest House has been recently updated and is also found within the Old City.

**Hostels.** Steve Guernsey lived for 10 years in Israel several decades ago.



Anita fills a teapot with water at the German Colony Boutique Hotel



Our room at Kibbutz Maagan

Guernsey said that when he and his wife first toured Israel when he was in his late 20s (and on a very tight budget) they turned to hostels which work best for individuals or couples.

For small groups of one to six people staying outside the Old City, Rabbi Jerry Feldman recommends Abraham Hostel.

“Abraham has the cleanest rooms and nicest breakfast for the cheapest amount of money you could imagine!” he says. “It’s just a place to sleep and allows your budget for other things.” Feldman says while he recommends this hostel, others are plentiful and are usually based on a “European model” which “most American travelers couldn’t handle.”

When KC-area resident Dorothy Erickson visits her daughter (who immigrated to Israel 40 years ago) the family drives up to the Kare Deshe Hostel on the Sea of Galilee. As with most lodging options in Israel, breakfast is included. It is perfectly situated in the midst of many popular Christian sites.

Making lodging arrangements in Israel may be as simple as clicking on Internet reservation sites and getting the best price—just like when traveling in the United States. You’ll find the prices for 4/5 star hotels, kibbutz hotels, boutique hotels like the German Colony Hotel in Haifa, Christian hospices, hostels, and private homes through AirBNB.

When traveling to Israel, there are more options than major hotel chains. Ben Haim, who uses 4 star hotels for her tour groups, states, “You can do the research for lodging. Yes there are simpler accommodations, but in every way it is less. You get what you pay for!”

## TOP 5 TIPS

By Anita Widaman

Below is a list of tips for family travel to the Holy Land of Israel.

1. Ask each member what they want to do, be willing to compromise, and build flexibility in your itinerary. Dwight and I looked at many organizations' itineraries to create ours. We asked the girls for their input. After we had visited two baptismal sites on the Jordan at our guide's suggestion, Hannah said that she would like to have been baptized in the Jordan River. I did not anticipate her wish! Another example is the trip to Masada. The temperature was above normal, but since we had hotel reservations we had to visit Masada that afternoon. The extreme heat made the tour of Masada short. With better planning on our part, we could have flipped the tour stop to another date or to the morning and increased our appreciation for this amazing historical site.

2. Familiarize yourself with Israel before you go. Hanna Ben Haim, a guide with 16 years of experience, states that she would like tourists to "Read the Gospels and try to be a little up on the news." Our guide Moshe Henzel has guided tours for 22 years. He advises his tour members to get a map and learn the locations of major sites. This may seem like simple advice, but the tour is an investment of your time and money. Many people will only visit Israel once, so make the most of your experience.

3. Connect with locals. We were able to visit with a local childhood friend who had lived in Israel for 40 years. The visit over coffee allowed us to understand the economy, educational system, and modern challenges of Israel that we would never had learned sitting next to an American on a tour bus!

Through email before the trip, we also arranged to meet two Kansas City-area missionaries for coffee. It was a fantastic opportunity for both us and the girls to hear what God is doing.

The program "Eat With" offers dinner in the homes of famous chefs or regular people. It allows the host and guest to engage in conversations that increases understanding of each person's culture.

4. If traveling solo, limit your accommodations to two lodging sites. You can book one hotel in the Galilee and another in Jerusalem if your time in Israel is approximately eight days. Israel is the size of New Jersey. Day trips from Jerusalem to the Dead Sea or Tel Aviv are easy and quick. This keeps you from wasting time packing and unpacking. Once again, you become familiar with area businesses, restaurants, laundry mats, hotel staff etc. Being familiar with your surroundings helps you to relax at night. Touring is hard work!

5. Buy a refillable water bottle instead of throw-away bottles. Touring



Israel requires much walking in the sun. You can easily get refills during the day from the tap as Israel's water is safe. Be kind to the environment!

The hike from En Gedi down to the Dead Sea—lowest place on Earth



## Geological forces shape the land, seasons shape best travel times

By Dwight Widaman

Just about everyone is surprised at what they see when they step foot in Israel. The Holy Land has been shaped by eons of geological activity as well as thousands of years of conquest.

Not known as a earthquake hotspot today, Israel has been home to some fairly large earthquakes through antiquity that helped shape both the land and history.

Using core samples from the Dead Sea and other areas, geologists have discovered evidence of 17 earthquakes that directly relate by year to important Biblical events. Included are Noah's Flood (Gen. 7:11), the destruction of Sodom and Gomorrah (Gen. 19:24-28), Moses in Sinai (Exodus 19:18), the Fall of Jericho (Joshua 6), both the crucifixion and resurrection of Christ (Matt. 27: 51-54, Matt. 28:2), and the earthquake that released Paul and Silas (Acts 16:26)

The quakes stem from the African rift—a literal "crack in the world" which separates the African plate from the Asian plate. It runs from the Red Sea in the south (where when snorkeling, you can see Egypt, Israel, Jordan and Saudi Arabia from your boat) north past the Dead Sea along the Jordan River Valley past the Galilee and into Turkey.

Depending on the time of year you travel, you'll see the diversity of Israel's climate. At its northern most Israeli point the rift has raised the earth's crust to form the snow-capped peaks of Mount Hermon. Fed by melting snow, the area includes the green and lush Mount Hermon Nature Reserve that is popular with Israeli families. If you travel in winter you can enjoy snow skiing on the eastern slopes of Mt. Hermon.

Rich Hasting says his favorite time of year to take groups is April, May and early June before it gets too hot and the tourists pour in.

"The spring is the time to go when the desert is alive from the rain," says Hastings. "The wilderness is in bloom with little flowers for just a few weeks from the rains. People are mesmerized by the beauty of the hills and valleys—all of it in bloom. It is truly amazing."

Visitors are also amazed at the greenery created by modern Israel's farming—one of the most productive

farmlands in the world. But farming and cities don't take all the water. The River Jordan includes a great canoeing site and, for the mildly adventurous, you can even enjoy white water rafting. There's not a lot of "white water" but it is fun all the same and makes for a great afternoon break from exploring historical sites.

Whether it is Northern Israel's snow-capped mountains, the Negev Desert and the lowest place on Earth—the Dead Sea, the beautiful waters of the Mediterranean or the Red Sea (that draw millions of Europeans on vacation), Israel is more diverse than visitors could have imagined.

Depending on when you go, you may have to compete with some of those tourists. Hastings also says that while the spring is nice, the winter months can be the most inexpensive time to go. Cheaper hotel rates, lower airfare and no major Jewish holidays other than Hanukkah, mean bargains are available.

No matter where you go, you won't miss the roadside excavations. Israel is in a continuous state of archeological discovery. Everywhere you step you are likely stepping on something important. With the country's population and building boom, protection is a top priority. Israel has invested billions to ensure that the relics and sites of not only Jews, but also Christians and Muslims, are preserved for visitors to enjoy.

One reason for the rapid growth during the last 25 years is the fall of the Iron Curtain. Over 1.5 million Russian and Eastern European Jews have left their former oppressive homelands and immigrated to Israel. Today, the most common language heard on Israeli streets, behind Hebrew, English and Arabic is, amazingly, Russian! Add to that Jews returning from other continents and you see Israel's culture is changing.

Tourism is also shaping the land. Israel is preparing for a wave of Chinese Christian visitors whose increasing numbers are already being noticed and forcing the government to plan new freeways and developers to build hundreds of new hotels. It's a grand effort to accommodate what most expect to be a doubling of the number of tourists to the country.

## TOUR TYPES

continued from page 11

the Israelites suffered and why they were grumbling. Walking helped me to see the land step by step. You see the details and small places which would never be seen from a bus!" Kathleen said after hiking to a location there was time for teaching and reflection.

Young adults have great resources to tour and learn about Israel with peers. The International Christian Embassy offers an "Arise Summer Tour." Its goal is "to reach and influence the world's young people by building a global movement fully committed to Jesus by encouraging young people's impact in all areas of their lives while standing with Israel." Another program is the Leadership Institute sponsored by Philos Project. It aims "to educate and empower a new generation of Christian leaders to facilitate long-term change in the Mid-

dle East." The fully funded program includes two weeks both in New York City and Israel where young adults study, tour, and volunteer.

Preparation to tour Israel will make it a success. The experience will impact you the rest of your life. Paula Guernsey said, "Our first tour gave me a love for the land and the people, as well as an appreciation of their lives."

The "take away" from touring Israel for college student Hannah Widaman, as well as others who have toured, is "it makes the Bible come alive. I want to read my Bible."

Moore agrees, "The Bible is not a history book only. It has prophecy that was told and has been fulfilled. And there are prophecies that are yet to be fulfilled. It makes you understand even more in your heart that the Lord has a plan that is revealed in the Bible and He will accomplish every word, just as He said."

## HOMESCHOOL

continued from page 11

### Local Classes & Sunday School

Classes are also available. The Jewish Roots Institute of Kansas City holds classes at Adat Yeshua Congregation each week. Individuals at any level interested in the study of Biblical culture, first century Judaism, and the Jewish roots of the Christian faith will enjoy the study of the Bible's lands and how it formed Christianity. Director Jerry Feldman says the public is always invited to attend and survey the classes. Visit JewishRootsInstitute.org for information. First Baptist Church of Raytown also holds numerous weekly classes (including Sunday mornings) that explore the Land of Israel. For info visit FirstBaptistRaytown.com

## FOOD

By Dwight Widaman

When our family travels, a natural highlight is the local cuisine. With Israel you not only have the benefit of Middle Eastern fare but also the many tastes and smells that Jews returning to live here have brought from their previous countries. While the standard popular fair is tasty, such as falafel with a terrific spread of salads, or thousands of purely Israeli dishes (see our recipe online for Shakshuka) you'll also find Yemini, Russian, Turkish, Indian, Greek and Brazilian just to name a few. At one kibbutz they serve Polish food.

Outside of the big cities like Tel-Aviv and Haifa, most food and restaurants are Kosher—meaning you won't get dairy and meat (plus other food handling regulations) served in the same restaurant.

This even applies to American favorites like McDonalds where we ordered their aptly named "Big American Meal." Though the portion sizes are huge, it's not cheap.

Want a milkshake with your meal or an ice cream cone? Because of the kosher laws you'll have to get your creamy treat at a kiosk away from the front counter and eat it in

an area separate from where meat is eaten. Most just get their cold treats as "take-away". We only chose McDonalds once as an opportunity to compare its menu in another culture.

Friday evenings through Saturday evenings is the day of rest, or Shabbat. That means if you are in Jerusalem after sundown on Friday, most restaurants are closed

and cabs may be difficult to find. Many tourists have dinner in their hotel that lays out quite a spread for many Jewish guests who prefer to spend the Sabbath away from home or just come to enjoy a Shabbat dinner.

As we mentioned last month, we made reservations through EatWith.com and enjoyed a Shabbat dinner in a private home with young Israeli's and tourists from around the world.

Tours always include breakfast and dinner. Israeli lunches are simple and healthy fares (most prefer vegetarian at lunch) and available everywhere. The timing of meals does take some getting use to. Israeli's like to eat lunch late and dinner after 8 p.m. Lunch is a great time to relax and see Israeli's in everyday life. Check with your guide on timing to keep the kids (and your own stomach) happy.



# Kansas City's most complete guide to the events and concerts you want to see!

# the events calendar

Compiled by Anita Widaman

Submit Your Events Online for FREE! Visit [www.metrovoicenews.com](http://www.metrovoicenews.com)

## FREE LISTINGS in the Metro Voice Calendar!

Metro Voice, PO Box 1114  
Lee's Summit, MO 64063  
[metrovoicecalendar@gmail.com](mailto:metrovoicecalendar@gmail.com)

PLEASE NOTE: Your item must be in by  
the 3rd Wednesday of each month for  
following month's issue.

Family Events, Christian Concerts, Theatre, Youth Events, Meetings, Clubs, Bible Studies, Family Fun, Speakers and More!



**NOV 12** WE BELIEVE... GOD'S NOT DEAD TOUR. 7:00 P.M. MEMORIAL HALL, 600 N. 7TH, KANSAS CITY, KS. FEATURING PERFORMANCES BY NEWSBOYS (PICTURED), HAWK NELSON AND RYAN STEVENSON. FOR MORE INFORMATION, VISIT [WWW.SHOFORCONCERTS.COM](http://WWW.SHOFORCONCERTS.COM)

## CONCERTS

**EVENING OF THANKSGIVING & PRAISE.** November 7, 6:00 pm. Central Baptist Church, 904 Wheat Rd., Winfield, KS. Doors open at 5:00 pm, concert starts at 6:00 pm. Featuring the Armouraires Quartet with their very special guests Gold City and Wilburn & Wilburn. 316-807-0121.

**WE BELIEVE... GOD'S NOT DEAD TOUR.** November 12, 7:00 pm. Memorial Hall, 600 N 7th, Kansas City, KS 66101. Featuring Newsboys, Hawk Nelson, and Ryan Stevenson. [www.shoforconcerts.com](http://www.shoforconcerts.com)

**NIGHT OF MUSIC WITH PAUL WILBUR.** November 13, 7:00 pm. World Revival Church, 9900 View High Drive, Kansas City, MO 64134. This award win-

ning Integrity artist won the Dove Award for the best praise album and has been leading worship for almost four decades around the world. 816-763-0708.

**TED PEARCE WORSHIP CONCERT.** November 14, 7:30 pm. Or HaOlam Messianic Congregation, 7029 W. 74th St., Overland Park, KS. No charge, open to the public. 913-383-8448.

**MARK LOWRY & THE MARTINS.** November 14, 7:00 pm. Calvary Baptist Church, 600 E. 50th St., Joplin, MO. 417-781-1841 or 1-885-223-1008.

**THE JOSTIES IN CONCERT.** November 14, 7:30 pm. FireEscape Coffeehouse, 126 W. Main, Chanute, KS 66720. This is a free concert! Please join us for a musical evening with this talented Canadian family - Gospel/Bluegrass/Inspirational music! A good-will

offering will be taken up for their ministry. 620-431-5815.

**AN EVENING WITH CASTING CROWNS.** November 20, 7:00 pm. Topeka Performing Arts Center, 214 SE 8th Ave., Topeka, KS. Special guest Lauren Daigle. 785-234-2787.

**TRIUMPHANT QUARTET.** November 20, 7:00 pm. First Christian Church of Kearney, 2151 S. Jefferson St., Kearney, MO 64060. 816-628-5583.

**FESTIVAL OF PRAISE TOUR.** November 23, 7:00 pm. Municipal Auditorium, 301 W. 13th St., Kansas City, MO. With Israel Houghton, Hezekiah Walker, Fred Hammond, Donnie McClurkin and Kim Burrell.

**4-BYGRACE.** November 29, 6:00 pm. Calvary Baptist Church, 900 NW 22nd St., Blue Springs, MO 64015. 816-228-5540.

**PHIL AND PAM MORGAN.** November 29, 6:00 pm. Freeman Baptist Church, 303 N Washington, Freeman, MO. 816-250-2186.

**Handel's Messiah.** December 4, 7:30 pm. Graceway Church, 5460 Blue Ridge Cut-Off, Kansas City, MO 64133. 816-358-1515.

**ISAAC CATES & ORDAINED.** December 5, 7:00 pm. Graceway, 5460 Blue Ridge Cutoff, Kansas City, MO 64133. Tickets available at the door. (816) 358-1515

**CHRISTMAS.** December 6, 6:00 pm. Blue Springs Assembly, 2501 NE Duncan Rd., Blue Springs, MO 64029. Featuring Guy Penrod in concert. 816-847-0200.

**FRANCESCA BATTISTELLI.** December 20, 6:00

pm. Smith Cotton Jr. High School, 312 W. Broadway, Sedalia, MO 65301. Balcony seating \$20. Floor seating \$25. Special guest Shawn Groves.

**HOPE.** December 20, 5:00 pm. Lenexa Baptist Church, 15320 W 87th St. Parkway, Lenexa, KS 66219. 913-599-6447.

## SOUTHERN GOSPEL (CALL FOR GROUPS)

ALPHA OMEGA CHRISTIAN MUSIC ASSOCIATION  
MONTHLY MEETING, PRAYER, DEVOTION,  
POTLUCK AND JAM. FIRST FRIDAY, 7pm. 10035 E.  
Westport Rd., Indep., MO 64052.

■ calendar continued on next page

An Amazing 15 Days!

TRIP TO  
**ISRAEL**

May 21 – June 6, 2016

[www.adatyeshuakc.com/events/](http://www.adatyeshuakc.com/events/) 913-888-7272



**Two Dessert Theater Comedy Events!**  
**November 14**  
**Bethany Lutheran Church**  
Overland Park Campus, 7pm • Stilwell Campus, 4pm

**Tickets just \$10**  
For info visit:  
[www.bethany-joco.org](http://www.bethany-joco.org)  
or call (913) 648-2228  
Tickets available on iTickets.com

**FALL**  
... a season of celebration  
& thanksgiving

**Holiday Bazaar**  
Saturday, November 14  
9 am to 4 pm  
♦ 90+ vendors ♦ gifts, jewelry ♦  
♦ many unique items  
♦ concessions

**Thanksgiving Eve Service**  
Wednesday, November 25  
7 to 8 pm  
Communion Served

**Sunday Services**  
8:00 am, 9:15 am  
10:45 am, 6:00 pm

**Northland Cathedral**  
J. Lowell Harrup, Pastor  
101 NW 99th St.  
Hwy 169 & Tiffany Springs Pkwy  
Kansas City, MO 64135  
816.453.2555  
[www.northlandcathedral.org](http://www.northlandcathedral.org)



**NOV 14** **TED PEARCE MARCH OF REMEMBRANCE PRESENTATION. 10:00 AM. AT OR HAOLAM, 7029 W. 74TH ST., OVERLAND PARK, KS.**

#### MO-KAN GOSPEL MUSIC ASSOCIATION

**POTLUCK AND JAM.** FOURTH FRIDAY (except for Nov. & Dec. when we meet on the 3rd Fri.). Northland Christian Church, 6120 NE 48th St., KCMO. 913-432-0359.

**PENTECOSTAL TABERNACLE CHURCH.** SECOND SATURDAY, 6pm. 341 S. 72nd St., Kansas City, KS 66111. Praise and Worship songs of Zion. 913-334-1009.

**CGMA NW MO CHAPTER MEETING, GOSPEL MUSIC AND POTLUCK.** SECOND SATURDAY. Faith Assembly of God Church, South 13 Hwy, Polo, MO. Travel North on I-35 North, go North of Liberty to the Polo/Lathrop Exit. Turn right onto 116 Hwy. Go 12 miles to 13 Hwy. Turn left and go ¼ mile. pegcla@msn.com.

**MOMENT OF TRUTH BIBLE BAPTIST CHURCH.** THIRD SATURDAY in January, May, September & October, 7pm. 310 Randolph Rd, Claycomo, MO. Gospel music sing. 816-452-4426.

**RADIANT LIFE ASSEMBLY OF GOD.** LAST SUNDAY, 6:30 p.m. Hwy. 33, Kearney, MO. Open mike. Gospel sing.

**GOSPEL JAMBOREE.** SECOND THURSDAY, 7 p.m. Life Christian Center, 1650 E Langsford Road, Lee's Summit, MO. 816-878-4694.

**PARADISE BAPTIST CHURCH.** SECOND SUNDAY, 6 p.m. Pot luck dinner at 5 p.m. Paradise Missouri. 816-591-1020.

#### CLASSES, SEMINARS, CONFERENCES

**SPIRIT OF HEALTH SEMINARS.** November. 5901 Main St., Grandview, MO. Mondays, 11 am on-going - Healing by Design Series (A-Z through every disease condition from a Biblical viewpoint). Thursdays, 11 am on-going - Herbal Remedies Series. Wednesdays, through November 11, 6:00 pm - Partnering With God Series. First Saturday of each month is Tea Time with Vaughn. 816-492-5648 or visit www.spiritofhealthkc.com.

**CONVENTION.** November 1; 11:00 am & 7:00 pm. First Love Ministries Church, 4747 Hadley Ave., Overland Park, KS 66203. Special guest speaker Evangelist Pat Schatzline. 913-403-9644.

**YOU & YOUR AGING PARENT.** November 1, 10:30 am-12:00 pm. Jewish Community Campus, 5801 W. 115th St., Overland Park, KS 66211. Are the responsibilities and decisions overwhelming you? Have you had the tough conversations we all must have with our parents? You are not alone. This workshop is for you.

**AVOID PROBATE.** November 5, 7:00 pm. Lewis Living Trust Center. 700 NE Langsford, Lee's Summit, MO 64063. 816-524-3200.

**THE CRAZY HAIR TOUR.** November 7, 6:30-9:00 pm. Colonial Presbyterian Church, 9500 Wornall Rd., Kansas City, MO 64114. America's most popular

mother daughter stage show helps mom cultivate Godcrazy daughters who embrace inner beauty, biblical modesty, and vibrant purity. They also equip tweens (8-12 year olds) and their moms to understand Biblical values with contemporary relevance.

**BIRTHRIGHT VOLUNTEER TRAINING.** November 7. Birthright Center, 6309 Walnut, Kansas City, MO. Would you like to help troubled pregnant women? Birthright, an emergency service offering positive alternatives to abortion, is staffed by volunteers. If you are willing to commit some of your time, there are a number of ways to help. We especially need compassionate women and men to answer the hotline calls, run pregnancy tests and befriend mothers in crisis. Reservations are required by November 3rd. 816-444-7090.

**OPEN HOUSE CLASSICAL CONVERSATIONS.** November 9, 9:00 am. Grace Bible Church, 19855 Antioch Rd., Stillwell, KS. Children ages 4-12 can sit in on a foundations class from 9:00 am-12:00 pm. Bring a lunch we eat as a community after class, this is a great time to visit with other moms about how CC has helped their homeschool experience. Children ages 9-12 can stay after lunch and sit in on an essentials class from 1-3 p.m. E-mail for more information and RSVP to heathervvaughan24@yahoo.com.

**WOMEN ON THE FRONTLINES 2015.** November 12-14. Christ Triumphant Church, 401 NE Chipman Rd., Lee's Summit, MO 64063. Speakers: Patricia King, Dr. Clarice Fluit, Carol Koch & worship with Julie Meyer. The heart of Women on the Frontlines is to create an Encounter Zone for hungry believers to receive powerful impartation from those who have gone before. It has become a place of encounter that has left thousands of men & women's lives changed. 816-524-6120.

**BUILDING A GROWING MARRIAGE SEMINAR.** November 13-15. Fort Osage Church of Nazarene, 19333 E. 24 Hwy., Independence, MO 64056. A low-key weekend seminar to help improve our marital relationships. 816-796-5879.

**TED PEARCE MARCH OF REMEMBRANCE PRESENTATION.** November 14, 10:00 am. Or HaOlam, 7029 W. 74th St., Overland Park, KS. Ted will speak in the morning services on the concept of presenting a local march. 1:30 pm A Q & A will be presented on the nuts and bolts of doing a local march. 913-383-8448.

**REAL WORKSHOPS.** November 14, 8:30 am. 7182 Renner Rd., Shawnee, KS 66217. 913-787-5444. Sponsored by Sherrie Pucket. Real Intimacy with the Father, November 14 & December 5. The Real Me: Discovering My Identity in Christ, January & February TBA. Each workshop will help you realize real freedom and emotional healing.

**ADOPTION AND THE LAW.** November 16, 7:00 p.m. - 8:30 p.m. 850 Main Street, Kansas City, MO. Training features attorney James Waits, who has handled approximately 2,500 adoptions in Missouri.

He'll share his expertise and answer your questions. Spon. By Catholic Charities of Kansas City-St. Joseph. 816.221.4377

**ULTIMATE CHRISTMAS PARTY.** November 17, 6:30-8:30 pm. Oak Ridge Baptist Church, 9301 Parallel Parkway, Kansas City, KS. November 19, 6:30-8:30 pm. Blue Ridge Bible Church, 8524 Blue Ridge Blvd., Kansas City, MO. Sponsored by Child Evangelism Fellowship. Seeking to partner with churches and individuals across our area who will provide a team of people to teach a Christmas party for children who have not already been reached through a CEF Club or local church. 816-358-1138.

**ROMANTIC GETAWAY.** Jan. 17 & 18. Chateau Avalon, 701 Village W Pkwy, Kansas City, KS. Presenters: Roger and Laureen Traver. Spon. By Mountain Top Marriages. 913-780-3423

**PROACTIVE PARENTING WITH JOSH & SEAN MCDOWELL.** November 20, 7:00-9:00 pm. Missouri Athletic Club, 405 Washington Ave., St. Louis, MO 63102. Sponsored by Faith Ascent.

**HER CHOICE TO HEAL CLASS.** January 2016. If Not For Grace Ministries provides services for women, men, and families struggling from the effects of an abortion. Please call 816-847-2911 or e-mail jedlund@infng.org.

#### SPECIAL CHURCH EVENTS

**VOLUNTEERS NEEDED.** Many women and men are living in darkness because of a past abortion. God has called If Not For Grace Ministries to bring His message of hope and healing to these broken-hearted. Would you like to partner with us to impact God's kingdom using your time and talent? Whether you have a few hours once per month, quarter, or year, this could be a place for you to invest in the lives of the abortion-wounded. For more information go to our website at infng.org or contact Jama at jedlund@infng.org or 816-847-2911.

**MENTOR RECRUITMENT.** Nov. 1 - 13. TBA. Mentor recruitment for a nonprofit organization. (816) 388-0013. sistersunitedofkansascity.org

**ADOPT-A-MOM FOR CHRISTMAS.** Mother's Refuge, 3721 Delridge, Independence, MO 64052. Mother's Refuge is seeking individuals, groups, or families who are interested in adopting one of our residents and her baby for Christmas. E-mail our Program Manager at kimberlee@mothersrefuge.org.

**2015 DAY OF PRAYER.** November 1. This year we



**NOV 14** **THE SWEET LIFE COMEDY TOUR**

ask you to please join with thousands of Christians across the globe on Sunday, November 1, 2015 to pray for refugees, internal displaced people, the Middle Eastern Church and the role SAT-7 plays in sharing God's love and encouraging those affected by these events. www.sat7.org/day-of-prayer.

**CHRISTIAN FAMILY SERVICES FUNDRAISING BANQUET.** November 5, 6 p.m. Double Tree Hotel, 10100 College Blvd, Overland Park. Please RSVP to Shelley@cfskc.org or call 913-383-3337.

**BLUE SPRINGS MO IMPACTING THE GLOBE.** November 7, 8:00 am. Cordill-Mason Elementary School, 4001 SW Christiansen Dr., Blue Springs, MO 64014. The Blue Springs community is partnering with ImpactLives, a non-profit organization, to prepare more than a quarter of a million meals to be distributed through sustainable humanitarian efforts in the Dominican Republic and possibly other 3rd world countries. 816-519-0085.

**FOOD PANTRY BBQ FUNDRAISER LUNCH.** November 7, 11:00 am. New Hope Presbyterian Church, 13310 S Blackbob Rd., Olathe, KS 66062. It is a free will offering with a suggested \$15 amount for lunch. There will be all kinds of BBQ along with side dishes, drinks, and even desserts. You can also pre-order rib slabs and pulled pork by November 5th, and pick them up on the 7th. caylor@shoestringmktg.net.

**SHEPHERD'S WAY MINISTRIES TWELFTH ANNUAL PANCAKE BREAKFAST.** November 7, 9:00-11:00 am. Cornerstone Church, 301 SE AA Highway, Blue Springs, MO 64014. Please come and be our guest. Gene Purtle is Chaplain at RCC & Jackson County Jail. He will share about his experience with jail and prison ministries. 816-525-2932.

**THE LIGHT HOUSE 30TH ANNIVERSARY.** November 8, 2:00-4:00 pm. Wornall Road Baptist Church, 400 W. Myer Blvd, Kansas City, MO. You are invited to a celebration. RSVP appreciated 816-361-2233.

**COMMUNITY DINNER.** November 14, 5:00-7:00 pm. Beacon Free Will Baptist Church, 7920 Harris Ave., Raytown, MO 64138. You're invited to a Free Chili/Soup Dinner to fellowship with neighbors. 816-353-7449.

**ANNUAL HOLIDAY BAZAAR.** November 14, 9:00am - 4:00pm. Northland Cathedral, 101 NW 99th St., Kansas City, MO 64155. Do some Christmas shopping before Thanksgiving! 90+ vendors. 816.455.2555

**HOLIDAY GIFT & CRAFT FAIR.** November 14, 9:00 am-4:00 pm. Episcopal Church of the Resurrection, 1433 NW R.D. Mize Rd., Blue Spring, MO 64015. Admission free. Vendors, hand-crafted items, homemade taste treats, "Flea Market" items, Christmas Decorations, Raffle. 925-784-2430.

**HOLIDAY MARKET AND CRAFT FAIR.** November 14, 9:00 am-3:00 pm. Holmeswood Baptist Church, 9700 Holmes Rd, Kansas City, MO. Many wonderful crafts and vendors, tasty lunch served, nuts available for holiday baking. 816- 942-1729.

**THE SWEET LIFE COMEDY TOUR, TWO DESSERT THEATER COMEDY EVENTS.** November 14, 4:00 pm. Bethany Lutheran Church, Stilwell Campus. November 14, 7:00 pm. Bethany Lutheran Church, Overland Park Campus. Tickets just \$10. 913-648-2228.

**PURSEONALITY-PURSE AUCTION AND LUNCHEON.** November 14, 10:30 am. First United Methodist Church, 301 SW Woods Chapel Rd., Blue Springs, MO 64015. "PURSEonality" purse auction benefit Truman Heritage Habitat for Humanity. Silent Auction, Displays from Women in Business, Luncheon, Live Auction. lthrophe@trumanhabitat.org. 816-461-6551.

**COMBINED SERVICE.** November 15, 10:45 a.m. Leawood Baptist Church, 8200 State Line Road, Leawood, KS Please join the International Community

■ calendar continued on next page

## Ted Pearce at Or HaOlam Congregation

*Join us for an Amazing Worship Service and Hear Ted's Heart for the March of Remembrance Holocaust Event this May!*

Ted Pearce is an internationally known worship leader and singer/song writer who mixes many styles of music with the Hebrew language and scriptures from the Bible. The characteristics of this style are joyful praises and intimately worshipful melodies. Ted's songs are designed to bring people of diverse backgrounds together in the unity of the Holy Spirit. He is also national spokesman for The March of Remembrance—a powerful and well-received worldwide event that believers have held to honor the Jewish community and which Kansas City will join in May of 2016.



**Saturday, Nov. 14**

Morning Shabbat Service 10:00 A.M.

Lunch 12:00 Noon • Q & A 1:30 P.M.

Worship Concert 7:30 P.M.

**Or HaOlam Congregation  
7029 W 74th St, Overland Park**

913-383-8448 • www.orhaolam.com  
admin@orhaolam.com

peace  
FAMILY  
Music  
Fun  
Friendship  
Listener Supported  
Community  
Joy  
Relationship  
New  
Information  
Traffic

# Kansas City's Home for Christian Music

Uplifting  
LOVE  
Encouragement  
Weather  
COMFORT

Church and Leawood Baptist for a combined service. Members of both the ICC and LBC worship teams, and the children from ICC will be singing in English and Russian. The Lord will be glorified and you will be edified! 913-649-0100

#### OPERATION CHRISTMAS CHILD COLLECTION WEEK.

**HARVESTER'S FOOD DISTRIBUTION.** November 19, 4:00 pm. Fort Osage Church of the Nazarene, 19333 E. 24 Hwy., Independence, MO 64056. Distribution of Food (perishable) from Harvester's Food Bank. All in the community welcome to pick up. 816-796-5879.

**BEST LITTLE ART AND CRAFT SHOW.** November 20, 10:00 am-7:00 pm & November 21, 10:00 am-6:00 pm. ROGER T. Sermon Community Center, 201 N Dodgion, Independence, MO (Southeast corner of Truman & Noland Rd.). 816-325-3770.

**THANKSGIVING EVE SERVICE.** November 25, 7-8 p.m. Northland Cathedral, 101 NW 99th St., Kansas City, MO 64155. 816.455.2555

**HEART OF AMERICA CHRISTMAS PAGEANT.** December 4, 7:00 pm; December 5, 3:30 pm & 7:00 pm; December 6, 3:30 pm; December 11, 7:00 pm; December 12, 3:30 pm & 7:00 pm; December 13, 3:30 pm. First Baptist Church Raytown, 10500 E. 350 Hwy., Raytown, MO 64138. 816-353-1994.

**CHRISTMAS CANTATA.** December 6, 10:10 am. Pisgah Baptist Church, 112 Pisgah Dr., Excelsior Springs, MO 64024. Christmas Cantata, "Joy! Unspeakable Joy!" Celebrate the wonder of His birth. 816-630-5121.

**CHRISTMAS OPEN HOUSE.** December 10, 4:00 pm & December 13, 1:00 pm. Mother's Refuge, 3721 Del-

ridge, Independence, MO 64052. Everyone is welcome to tour our home and learn more about what we do, who we serve, and how you can help. There will also be plenty of cookies and cocoa to enjoy. We hope to see you there! 816-353-8070.

## FINE ARTS

**AMERICAN EPICS: THOMAS HART BENTON AND HOLLYWOOD.** Nelson Atkins, 4525 Oak St., Kansas City, MO 64111. The first major Benton exhibition in more than 25 years reveals the fascinating but overlooked relationship between Benton's art, movie making and visual storytelling. Nearly 100 works and complementary film clips highlight the cinematic, composition and technical underpinnings of Benton's art. 816-751-1278.

**TIN PAN ALLEY.** Through November 1. Quality Hill Playhouse, 303 W. 10th St., Kansas City, MO. A salute to America's popular music composers who promoted their sheet music by the way of "song pluggers" in New York City's Tin Pan Alley. 816-421-1700.

**HANDBELL CHOIR AND FLUTE CHOIR.** November 1, 3:00 pm. Gano Chapel on the Jewell Campus, 500 College Hill, Liberty, MO 64068. Free. www.jewell.edu.

**LITTLE SHOP OF HORRORS.** November 7, 12, 14, 19, 21 at 7:30 pm.; November 8, 15, 22 at 2:00 pm. White Theatre, The Jewish Community Center, 5801 W. 115th St., Overland Park, KS 66211. 913-327-8054

**MARY POPPINS.** November 12, 7:00 pm; November 13, 7:00 pm; November 14, 2:00 pm & 7:00 pm; November 15, 2:00 pm; November 19, 7:00 pm; November 20, 7:00 pm; November 21, 2:00 pm & 7:00 pm; November 22, 2:00 pm. School Day Performances: November 13, 10:00 am; November 20, 10:00



**NOV 6-8** **CAFFEINE CRAWL KANSAS CITY. 8:30 A.M. MULTIPLE CAFES THROUGHOUT THE KANSAS CITY AREA. FOR TICKETS, VISIT WWW.CAFFEINECRAWL.COM**

am. Bell Cultural Events Center, MidAmerica Nazarene, 2030 E. College Way, Olathe, KS 66062. Sponsored by CYT. www.cytkc.org

**SCREENLAND AT THE SYMPHONY: STAR TREK 2009.** November 12 & 14, 7:00 pm. Helzberg Hall, 1601 Broadway, Kansas City, MO. Reach warp speed as you watch the entire film on the giant Helzberg Hall screen and experience scores performed live by the Kansas City Symphony, boldly going where no orchestra has gone before! 816-994-7222.

**TWELVE ANGRY JURORS.** November 12 & 13.

Maranatha Christian Academy, North Gym, 1500 W. 63rd St., Shawnee, KS. Cost is \$8 for adults and \$6 for students. 913-631-0637.

**HANDEL'S MESSIAH.** December 3, 7:00 pm; December 4, 8:00 pm; December 5, 8:00 pm; December 6, 2:00 pm. Helzberg Hall, Kauffman Center, 1601 Broadway, Kansas City, MO. The Independence Messiah Choir joins with the Symphony and Symphony Chorus. 816-994-7222.

**CONSERVATORY CHOIRS: A SEASON FOR GIVING.** December 5, 7:30 pm. Visitation Catholic Church, 5141 Main St., Kansas City, MO 64113. Free. Benefit the Harvesters Community Food Network. Non-perishable food items and monetary contributions to Harvesters will be accepted.

**NUTCRACKER.** December 5-24. Kauffman Center for the Performing Arts, 1601 Broadway Blvd., Kansas City, MO 64108. An all new production of this favorite holiday classic. 816-931-8993.

**OH, THE PLACES YOU'LL GO.** December 13, 2:30 pm & 4:30 pm. Park Hill South High School, 4500 NW River Park Dr., Kansas City, MO 64153. Presented by The Northland Symphony Orchestra. 816-945-2436.

**MYSTERY OF CHRISTMAS.** Dec 18, 19, and 20. Goppert Theatre, Avila University, 11901 Wornall Rd, Kansas City, MO 64145. Fri December 18, 9:30 am

Student Arts Field Trip Performance, 6:30 Dinner and show, 7:30 Show only; Sat Dec 19, 2:00pm Matinee, 7:00pm Evening Show; Sun Dec 20, 2:00pm Matinee. \$20 Door \$15 Advance; \$10 for groups of 15 / Seniors and Students with ID. Presented by Dramatic School of Ballet. 816.7679222

## FAMILY OUTINGS

**SHUCKS MAZE.** Through November 1; Fridays 6:00-10:00 pm, Saturdays 12:00-10:00 pm, Sundays 12:00-6:00 pm. 291 Hwy., Lee's Summit, MO. Corn maze, pumpkin patch, barrel train, corn cannon, hay mountain, hayrides, concessions, picnic area, hay jump. 816-600-0024.

**DA VINCI: THE EXHIBITION.** Through May 1, 2016. Tuesday-Thursday, 10:00 am-5:00 pm; Friday-Saturday, 10:00 am-6:00 pm; Sunday, 12:00-5:00 pm. Union Station, 30 W. Pershing Rd., Kansas City, MO 64108. Featuring more than 65 fully built life-size inventions, more than 20 fine art studies and dozens of stunning displays, guests will learn the complex beginnings and lifetime achievements of Da Vinci through his discoveries in art, engineering, flight, hydraulics, music, light and more.

**CAFFEINE CRAWL KANSAS CITY.** NOVEMBER 6-8, 8:30 am. Multiple Cafes, Kansas City, MO. Join us for the 40th Caffeine Crawl in the city that started it all-Kansas City! Choose one (or more) of 11 tours through 21 of KC's best coffee, tea and chocolate shops for a caffeinated weekend to remember. Explore the KC specialty beverage scene like never before by bike, car, or bus, with multiple time options to fit your schedule. Tickets available at www.caffeinecrawl.com.

**WILDERNESS RUN.** November 7, 9:00 am. Shoal Creek Living History Museum, 7000 N.E. Barry Rd., Kansas City, MO 64156. 5 mile or 2 mile race! Participants will run through the village, around the fields, up and down hills, over logs, through the woods, across creeks, and more. 816-513-7567.

**GREAT PUMPKIN SMASH.** November 7, 10:00 am-3:30 pm. Kansas City Zoo, 6800 Zoo Dr., Kansas City, MO 64132. Our animals are getting into the post Halloween enrichment at the Great Pumpkin Smash. Watch them crush, kick, bounce and play with big orange pumpkins. 816-595-1234.

**KCP&L PLAZA LIGHTS.** November 26, 6:54 pm Flip of the Switch-January 17, 2016. Country Club Plaza, Main Stage at Nichols Road & Pennsylvania, by Brio

■ calendar continued on next page

**Abiding Faith Baptist Church and Mission**

Sundays: 9:00 am-Devotion • 9:30 am-Sunday School • 10:45 am-Worship | Wednesdays: 7:00 pm-Bible Study for Adults/Youth

(816) 427-2330 • 8524 Blue Ridge Blvd • Kansas City, MO • www.abidingfaithbcm.com

## Families Make the Difference

Every child deserves to grow up in a safe, nurturing environment. When a child's family is not able to provide that for a child, a foster family can.

In Missouri a foster parent

- must be at least 21 years of age
- may be single or married
- must complete training and licensing process (offered at no charge through MBCH Children & Family Ministries)

You can make a difference by becoming "family" for a hurting child.

MBCH Children and Family Ministries is an affiliate of the Missouri Baptist Children's Home

For more information, call (816) 795-8878 or visit www.mbch.org

## Conception Abbey

The Benedictine Monks of Conception Abbey welcome over 10,000 guests each year. Whether you come for a personal retreat, directed retreat, workshop, or just to get away we hope that after one visit, you'll never be a stranger to Conception Abbey.

**The Abbey Guest Center**  
**Conception Abbey**  
 P.O. Box 501  
 37174 State Hwy V V  
 Conception, MO 64433  
 (660) 944-2809  
 guests@conception.edu  
 www.conceptionabbey.org

## Built in Kansas City. For Kansas City Families.

**Kansas City Personalities**  
 Mornings w/ Melony & Wayne  
 Afternoons w/ Don Godman  
 Local News, Weather & Traffic

**Kansas City Difference Makers**  
 Prayer Works  
 Drive Thru Difference  
 Christian Business Network

Life885.com

**life 88.5**

Tuscan Grille, Kansas City, MO. Shine daily from 5:00 pm to 3:00 am, Thanksgiving through January 17, 2016. 816-753-0100.

**2015 CHRISTMAS CANDLELIGHT TOUR.** November 27 & 28, 6:00 pm. Harris Kearney House, 4000 Baltimore Ave., Kansas City, MO 64111. Your family and friends are cordially invited to join family members from LITTLE WOMEN as they guide visitors through the 1855 Harris-Kearney House to see festive decorations, enjoy Christmas Eve scenarios and tasty refreshments. 816-561-1821.

**JACK AND THE BEANSTALK.** November 27 & 28, 11:00 am & 2:00 pm. Puppetry Arts Institute, 11025 E. Winner Rd., Independence, MO 64052. 816-833-9777.

**DECK THE HALLS HOLIDAY TOUR.** November 27-December 30. Bingham-Waggoner Estate, 313 W Pacific Ave., Independence, MO. 816-461-3491.

**“THE 12 DAYS OF SHTICKMAS!”** (c). November 27-January 3, 2016. Crown Center, 3rd Floor, 2450 Grand Blvd., Kansas City, MO. For more information contact The Martin City Melodrama & Vaudeville Co. 913-642-7576.

**OAK RIDGE BOYS CHRISTMAS SHOW.** November 30, 7:30 pm. Topeka Performing Arts Center, 214 SE 8th Ave., Topeka KS 66630. December 16. Civic Arena, 100 N. 4th St., St. Joseph, MO 64501. 785-234-2787.

**COMFORT & JOY JIM BRICKMAN.** December 12, 8:00 pm. Johnson County Community College, Yardley Hall, 12345 College Blvd., Overland Park, KS 66120. Music that soothes the aches of daily life, and gets you in the mood to hang the mistletoe. Jim celebrates this in a one-of-a-kind concert filled with lush instrumentals and soaring vocals. 913-469-4550.

**CONCERT OF CHRISTMAS MUSIC.** December 13, 7:00 pm. Nativity of Mary Parish, 10017 E. 36th Terr., Independence, MO. Free admission, free will offering. Presented by The Jacomo Chorale.

**TRANS-SIBERIAN ORCHESTRA.** December 26, 3:00 pm & 8:00 pm. Sprint Center, 1407 Grand Blvd., Kansas City, MO. 1-888-929-7849.

## MONTHLY MEETINGS

**BUILDING BETTER MOMS.** The United Methodist Church of the Resurrection, 13720 Roe Ave., Leawood, KS. For local mothers of children in early childhood, elementary school, middle school, high school, and for single moms, with both day and evening meeting times available at the Leawood campus. www.cor.org 913-897-0120.

**DIVORCECARE AND DIVORCECARE4KIDS.** 6:00-7:30 pm. Timothy Lutheran Church, 425 NW RD Mize

Road, Blue Springs, MO. Help for those going through or having gone through divorce. 816-228-5300.

**WEEKLY - CHRISTIAN BUSINESS MEN'S COMMITTEE.** Meets weekly in various parts of the city. Call Jim Mathis, 913-269-6709, for time and location.

**WEEKLY - FAITH BASED 12-STEP PROGRAM OF RECOVERY FROM COMPULSIVE OVEREATING.** Call Overeater's Anonymous 913-383-5933 or visit www.kansascityoa.org for more information and to access the schedule of various meetings in the metro area.

**MONTHLY - MISSOURI RIGHT TO LIFE CHAPTERS 816-353-4113.**

**3RD SUNDAY - CANCER SUPPORT GROUP.** 6:30-8:00 p.m. Beacon Free Baptist Church, 10825 E. 79th Street, Raytown, MO 64138. Connect with others who share your journey, you are not alone. 816-353-7447.

**MONDAY - HEALING ROOMS MINISTRIES.** 3:00-6:00 pm. Healing Rooms of Olathe, 1548 E Spruce, Olathe, KS 66061. M-F-W by appointment. www.healingroomsolathe.com 913-563-2413.

**MONDAY - HEALING ROOMS MINISTRIES.** 4:00-6:00 pm. Hope City, 5101E. 24th St., Kansas City, MO.

**2ND & 4TH MONDAY - MOPS.** 9:30 a.m. MOPS. First Baptist Raytown, 10500 E 350 Highway, Raytown, MO. Support groups for mothers of preschool-aged children. Offers creative activities, social events & learning opportunities. 816-353-1994.

**TUESDAY - IF NOT FOR GRACE PRAYER.** 9:30 am. Crown Pointe Church, 5950 NE Lakewood Way, Lee's Summit, MO 64086. kmiller@infq.org.

**TUESDAY - FEAR NOT SUPPORT GROUP.** 7pm. Lakeland Community Church, 913 NE Colbern Rd., Lee's Summit, MO. Christ-Centered support group for anxiety and depression. Material based on the Christian 12 Steps; Serenity Prayer also Anxiety Centre "The Anxiety/Phobia Workbook" by Edmund Bourne. 816-554-0929.

**TUESDAY - CELEBRATE RECOVERY.** 7pm. Holy Cross Lutheran Church, 7851 W. 119th St., OPKS. Christ centered 12-step program for anyone with a hurt, hang-up, or addiction. Contact Craig Hauser, 913-449-7265.

**TUESDAY - HEARTLAND HEALING ROOMS.** 7:00-8:30 pm. Christ Triumphant Church, 401 NE Chipman Rd., Lee's Summit, MO. www.heartlandhealingrooms.org.

**1ST TUESDAY - CHRISTIAN NIGHT.** 6 - 8 pm. Skate World, I-35 & Shawnee Mission Parkway, Mission, KS. 913-262-0711.

**1ST TUESDAY - CREATION SCIENCE ASSN. FOR MID-AMERICA.** 7 p.m., Westbrooke Church, 9777 Antioch, OPKS. Nursery available for fee. "Creation Safari's". www.csama.org for more info. Res. req. 816-618-3610.

**1ST TUESDAY - FIBROMYALGIA SUPPORT GROUP MEETINGS.** 7:00 pm., Life Springs Church, Neos Youth Center, 206 N. Webster St., Suite 112, Spring Hill, KS. Contact Kim: fibrohopeandhealing@yahoo.com or 337-852-5052.

**1ST & 3RD TUESDAY - GRIEFSHARE.** 7-8:30pm. Timothy Lutheran Ministries, 425 NW RD Mize Rd., Blue Springs, MO. 816-228-5300.

**2ND TUESDAY - EQUIPPING BELIEVERS MID-WEST.** 7:00 pm. Blue Spring, Hampton Inn, 900 NW S. Outer Rd., Blue Springs, MO 64015. Free Prayer for healing and freedom from addiction, Free training to heal the sick, evangelize the lost, set the oppressed free. 913-488-6749.

**2ND & 4TH TUESDAY - "WINGS OF HOPE."** Blue Springs Christian Church, 7920 S. 7 Hwy, Blue Springs, MO. A Christian based ministry to provide support for families grieving loss through miscarriage or infant death, because every life matters. Email: wingsofhope@bscc.org.

**2ND & 4TH TUESDAY - MOPS.** 9:00 am. Emmanuel Baptist Church, 10100 Metcalf Ave., Overland Park, KS. 913-649-0900.

**3RD TUESDAY - LUNCH & LEARN.** 12:00 pm. KC First Church of Nazarene, 11811 State Line Rd. Kansas City, MO 64114. Each session will focus on a different geographical area or skill set. Please bring your own sack lunch; desserts and beverages will be provided. 816-942-9022.

**WEDNESDAY - HEALING ROOMS MINISTRIES.** 1:30-3:00 pm. Hope City, 5101 E. 24th St., KCMO

**WEDNESDAY WEEKLY - LIVING FREE, CHRIST-CENTERED 12 STEP PROGRAM.** Front Modular, 6:30-8:00. Abundant Life Baptist Church, 414 SW Persels, LS, MO. 816-554-8181.

**WEEKLY WEDNESDAY - CHRISTIAN BUSINESS CONNECTIONS NETWORK.** 3:00 pm, Gusto! Coffee, 3390 SW Fascination Dr., Lee's Summit, MO 64081. 816-767-1100.

**WEDNESDAY - BREAK TIME CLUB.** 9:30am-1:30pm. Timothy Lutheran Church, 425 NW R.D.

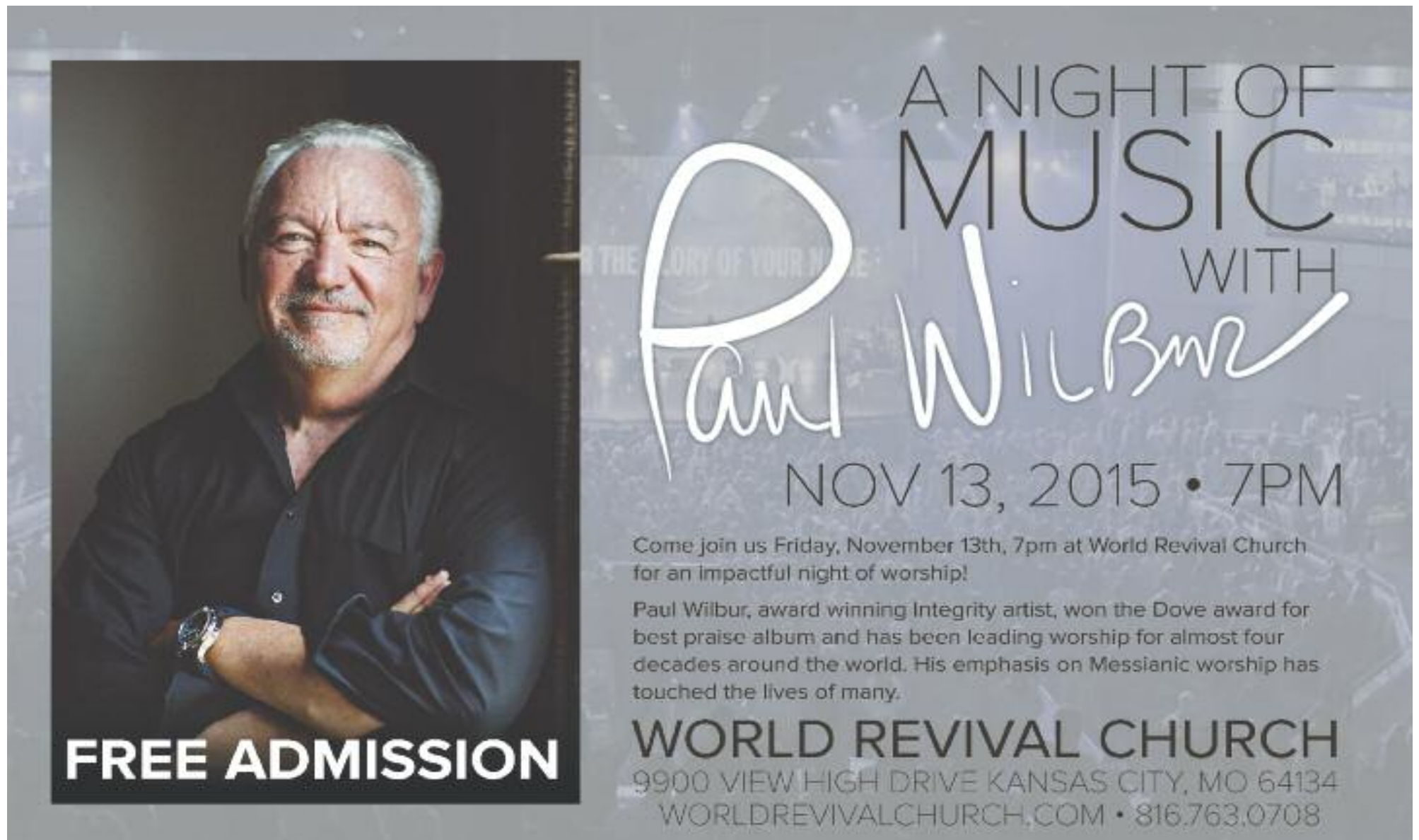


**Your degree.  
Your ministry.  
Your schedule.**

**KANSAS CHRISTIAN COLLEGE** ONLINE

Visit [www.kansaschristian.edu](http://www.kansaschristian.edu) for information on how to earn your religion degree online on your schedule! Or email our recruiter directly with your questions. Mention code **MV2015** to receive a promotional enrollment credit!

Email: [online@kansaschristian.edu](mailto:online@kansaschristian.edu)  
Call: 913-722-0272  
Web: [www.kansaschristian.edu](http://www.kansaschristian.edu)  
Tweet: @KCC\_Online



**A NIGHT OF MUSIC WITH Paul Wilbur**

**NOV 13, 2015 • 7PM**

Come join us Friday, November 13th, 7pm at World Revival Church for an impactful night of worship!

Paul Wilbur, award winning Integrity artist, won the Dove award for best praise album and has been leading worship for almost four decades around the world. His emphasis on Messianic worship has touched the lives of many.

**FREE ADMISSION**

**WORLD REVIVAL CHURCH**  
9900 VIEW HIGH DRIVE KANSAS CITY, MO 64134  
WORLDREVIVALCHURCH.COM • 816.763.0708

## COOPER

continued from page 7

came. Our agency gave us great news. They had a referral for us for an 11-month old baby boy! Our case worker wasted no time telling us as much as she could about the boy who would become part of our forever family and us a part of his. Within minutes we had pictures of our new "mini," Dawit.

Dawit is Amharic for "beloved." And that he is! Beloved.

But, our journey didn't get any easier after that day. It wasn't long before we were facing the impossible. There was a chance

Dawit would not meet the criteria set forth classifying him as an orphan, thereby making him ineligible for adoption even though all the policies and procedures were followed. For the next nine months we would work tirelessly with our agency to provide further evidence verifying our son's orphan status.

This was going to be an enormous obstacle to overcome. So we rallied the proverbial troops. We hired an Ethiopian investigator to assist us in confirming the details of Dawit's story and attempt to locate his birth mother. We contacted our state representatives and senators hoping our legislators would be able to make

some inquiries on our behalf, and we began conversations with a top-notch immigration lawyer to assist us in bringing Dawit home.

But then, God happened.

The very next day Jaclyn called our case officer in Lee's Summit hoping against hope for some good news. "Oh yeah," the officer said, "I think I just approved your case. Let me check." (Pause.) "Yes, I sent your case to my supervisor this morning for approval."

Only God.

Less than a month after that phone conversation, Jaclyn and I packed up and boarded a plane for Ethiopia to meet our

sweet boy for the first time. We spent 19 wonderful days in Ethiopia sightseeing, enjoying Ethiopian hospitality and culture, and cherishing every moment with our sweet boy.

Life at home has been good. Dawit is adjusting surprisingly well to his new home and family. I often joke that he's adjusting much better than we're adjusting to being parents of four minis! Dawit is fun and energetic toddler. He has an inquisitive spirit about him. He's in to everything and he's extremely bright. He loves hugs and kisses (and cars), and he brings so much joy to our lives. We are extremely blessed to be part of his story.

## JEANES

continued from page 10

diagnosed with a form of autism when she was about five. For five years, we wondered about this adorable little angry child. Why was she so mad? Why wouldn't she breastfeed? For five years, I struggled with my own anger toward this small bundle of noise and confusion. I honestly do not feel as if God got this right some days. Through this, however, He has shown me strength I never believed was possible; He has shown me grace beyond my own ability. She can be a tough nut to crack, but I'll never give her up.

Likewise, bringing two children from a foreign country with a violent history, and one of them already a teenager? Oh, man. I've gotten to know them a little bit, though, and I've grown to really appreciate what they have to offer. I have a strong feeling they will be very excited to come to America; at least for the first week or so. Eventually, though, they will begin missing their homeland; they will begin resenting us for taking them away from what they've known their whole lives prior. They will find themselves in a land of more 'pumoi' (an African language, for "white person") than they have ever been around. Heck, they may even see us as ignorant westerners, thinking we are somehow "saving" them.

You know what? That is okay, because even after struggling with an autistic child, we've grown to love her more deeply, and to understand Christ's love and sacrifice for us more intensely than if our children were all completely healthy and perfect, and never came from broken homes. We love these kids, too, as deeply as we can from a distance. And, while I'm not ready for them, yet, our Heavenly Father is, and that's all I can ask for.

Adoption isn't for the faint of heart; nor is parenting. I should know, I'm faint of heart! We serve an amazing Father, though, whose heart loves far beyond our fears, and whose grace overflows in our lives. I cannot wait to be an official father of four. No idea what to expect, but God has shown me I don't need to know; He'll be there with us.

### From the Editor

Metro Voice has received wonderful feedback from our Annual Adoption and Foster Care Guide which we publish each October and November. Through this yearly effort we pray that we might connect the hearts of prospective adoptive and foster families with the children that are searching for their "forever" family.

While many of the stories are provided to us by the organizations that sponsor the section, other touching testimonials are recommended to us by other adoptive families and our volunteers. One such testimonial was that of Tracie Loux. Her story appeared on the website of her employer, a Georgia-based adoption consulting firm. We set it aside for possible publication with the intention of contacting Tracie through the organization to reprint it. On press day, the story was included at the last minute before we received approval. By waiting we would have found out there was more to Tracie and her family's adoption journey.

Our apologies for our oversight to Tracie and her employer.

**Ascension Lutheran Church** 4900 Blue Ridge Blvd  
Kansas City, MO  
Phone: 358-1919

Join us for worship each week.  
Sunday Morning Worship 8 a.m. and 10:45 a.m.  
Sunday School and Bible Study 9:30 a.m.

The church is hosting walkers: 7:00 - 10:00 am, Monday through Friday.

We hope to see you!

**PROTECT YOUR WORLD**  
AUTO • HOME • LIFE • RETIREMENT

**Allstate**  
You're in good hands.

Auto Home Life Retirement

Allen Walden  
816-875-4927  
1493 SW Market St.  
Lee's Summit, MO 64081  
allenwalden@allstate.com

Insurance and discounts subject to terms, conditions and availability. Allstate Property and Casualty Insurance Co., Allstate Vehicle and Property Insurance Co., Allstate Indemnity Co., Life Insurance and annuities issued by Lincoln Benefit Life Company, Lincoln, NE; Allstate Life Insurance Company, Northbrook, IL; In New York, Allstate Life Insurance Company of New York, Hauppauge, NY; Northbrook, IL. © 2013 Allstate Insurance Co.

Just a few miles away from the congested and rowdy crowds, Living Waters offers secluded float trips in Central Missouri. Less paddling, less dragging, none of the drunken stupor... this is a river experience that will set your retreat apart... families, church groups and scouts.

**Living Waters**

877-851-8158 (toll free) • www.john738.com

Let me make the *best* of your time.

**Alan R. Jones, CPA**

406 N. Foxridge Drive  
Raymore, MO  
816-331-2232  
alanjonescpa@hotmail.com

Member AICPA

**(816) 220-3714**

Fully Insured

**SAVE 10%**  
Custom HOLIDAY LIGHTING  
(WITH THIS AD)

**www.cuttingedgealawn.net**

3 3 r d A N N U A L

# Best Little Art and Crafts Show IN INDEPENDENCE

November 20, 10 a.m. - 7 p.m.  
November 21, 10 a.m. - 6 p.m.

4 floors with 120 booths all with original works of art and crafts



No admission!

Free parking and shuttle service

**Roger T. Sermon Community Center**  
201 North Dodgion Independence, MO  
Southeast corner of Truman & Noland Roads

**816.325.7370 for information**

Sponsored by the Independence Parks and Recreation Department

# entertainment

## MYSTERY OF CHRISTMAS RETURNS HOME

Popular retelling of the Nutcracker Story to celebrate 18 years

This year marks the 18th season of The Mystery of Christmas.

This high-tech production has inspired audiences for almost two decades—15 years at The Youthfront Auditorium in Kansas City, and two years at the Liberty Performing Arts Center in Liberty Mo. This year the Mystery is coming back to Kansas City and establishing a new home in the beautiful Goppert Theater at Avila University.

This new version of the Christmas classic The Nutcracker will be performed by Dramatic Truth Ballet Theatre and the Dramatic Truth School of the Arts. This production's birth was in Nashville in 1987. Artistic Director Liz Dimmel was driving to the Tennessee Performing Arts Theater to see her daughter perform in The Nutcracker. Liz casually mentioned to her husband Doug, "Wouldn't it be



### ■ sidenote

#### PERFORMANCES ARE:

- Friday, Dec 18- 9:30 am School Show
- Friday, Dec 18 - 6:00 pm Dinner Show \$50 plate; Show Only 7:30pm \$20 Door/ \$15 in advance / \$10 Seniors & groups of 15
- Saturday, Dec 19 - 2:00 pm Matinee - \$20 Door / \$15 in advance / \$10 Seniors & groups of 15
- Saturday, Dec 19 - 7:00 pm Evening - \$20 Door / \$15 in advance / \$10 Seniors & groups of 15
- Sunday, Dec 20 - 2:00 pm Matinee - \$20 Door / \$15 in advance / \$10 Seniors & groups of 15

great if there was a version of The Nutcracker that actually told the Christmas story?" By the time they arrived home that evening vision for The Mystery of Christmas became a reality.

As in The Nutcracker, the MOC production includes the classical

music of Tchaikovsky's Nutcracker and central figure Clara has a magical dream. However she doesn't dream about Sugarplum Fairies or snowflakes, but rather she travels back in time to Bethlehem. She witnesses angels, shepherds, and kings converging on a humble stable where she discovers The Mystery of Christmas.

As television and cinema continue to push traditional family boundaries, it's more difficult to find productions/events that will be appropriate and enjoyable for parents and children. The Mystery of

## MOVIES, BOOKS, MUSIC & MORE!



(LEFT): The heart-felt "dance of Mary" is popular with the audience. Photo Credit: Debra Lawrence, Abundant Moments Photography. (Above): The Mystery of Christmas combines both modern and classical dance in a retelling of the Nutcracker story with a Christ-centered theme. Photo Credit: Debra Lawrence, Abundant Moments Photography

Christmas was created to appeal to families looking for spiritually significant events during the holidays.

Coming to Avila, The Mystery of Christmas brings several exciting new changes for audiences to enjoy! New costumes, new choreography, and the experience of this beautiful and moving ballet in the round are just a few. The layout of this unique theater offers limitless creative opportunities! Imagine the thrill as dancers fly by audience members only a

couple of feet from their seats!

Dramatic Truth School of the Arts is a not-for-profit organization that is dedicated to excellence in training and excellence in character.

### i moreinformation

For more information call 816.767.9222 Tickets online at [www.dramatictruth.org](http://www.dramatictruth.org).



**Become a Friend of Heartland Habitat and support our Christian housing ministry. For just \$25, you can help build a home!**

#### Your \$25 will purchase:

- 8 2x4's for construction
- A gallon of paint
- Flowers for the garden
- 2 window shades
- The front door lock-set
- Light fixture for the children's bedroom
- Electric outlet covers for the entire house



**Call 816-468-7190 and 913-342-3047 or visit [www.heartlandhabitat.org](http://www.heartlandhabitat.org)**

## Greater Pentecostal Temple

### SERVICES

#### Wednesday

Intercessory Prayer 5:00 PM  
Evangelistic (Vesper) Service 6:30 PM  
Evening Bible Study 7:00 PM  
Youth Department Meeting 7:00 PM

#### Sunday

Intercessory Prayer 8:00 AM  
Sunday School  
Relationship Class 9:00 AM  
Praise & Worship 10:00 AM



Bishop  
Marvin E. Donaldson  
Pastor



864 Spilllog Avenue • Kansas City, Kansas 66101 • (913) 371-4667

Family  
Owned &  
Operated!



**Dairy Queen**

**Orange Julius**

**Candy Cane Oreo Blizzard**

Oreo Cookie pieces & peppermint candy cane bits blended with delicious soft serve

**Happy Thanksgiving to Our Customers!**

"Always giving thanks for all things in the name of our Lord Jesus Christ to God, even the Father" Ephesians 5:20

1900 SW 7 Hwy in Blue Springs

(1/2 miles south of 40 Hwy) 228-1711

14420 E. 40 Hwy

(Noland Rd. in Independence) 478-8060

11904 Shawnee Mission Parkway, Shawnee, KS  
Ph. 913-962-5151. Come see us!

## Book says volunteerism among the church is strong

by Sarah Brown

Evangelical leaders say their constituents are spending the same or more time as volunteers in their churches and communities than they did a decade ago, according to the August Evangelical Leaders Survey. Answering from their experience of leadership in the community, 55 percent said evangelicals have maintained or increased their voluntary service, while 45 percent said evangelical engagement in volunteer activities has decreased.

More than one quarter of all Americans volunteer each year for an average of 50 hours spread out over a 12-month period, according to the U.S. Bureau of Labor Statistics. The organization for which volunteers worked the most hours during the year was most frequently religious.

“What surprised me about the Evangelical Leaders Survey was not the findings, but that nearly two thirds shared their thoughts about volunteerism among evangelicals — many using several paragraphs,” said Leith Anderson, president of the National Association of Evangelicals (NAE). “Clearly this is a significant topic of interest among church and ministry leaders.”

Anderson’s new book “The Volunteer Church” helps pastors and ministry leaders know how to manage and empower those in volunteer ministry positions.

Ron Hamilton, conference minister of the Conservative Congregational Christian Conference, said, “Churches with a highly engaged membership who regularly volunteer are growing, and churches with a limited involvement are in decline.”

Anderson said, “At their core, churches are volunteer organizations. Even if they can, most churches should not replace their volunteers with hired employees. The act of volunteering is an expression of worship, it serves people, and it builds relationships.”

Leaders noted the popularity of short-term missions, awareness from social media campaigns and an increasing desire among young people to make tangible difference as having an impact on the increase of volunteer engagements. Winnie Bartel, representative of Mennonite Brethren Church, said, “The volunteer ‘market’ is smarter now and has created avenues for even full-time employed people to volunteer somehow and somewhere.”

Evangelical leaders shared potential barriers to volunteering, including time demands, busy family schedules, less com-

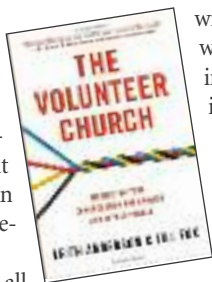
mitment to the local church, and a growing hesitancy to commit to long-term positions (e.g., teach Sunday School for one year).

To address the concerns of busy church members, Kevin McBride, pastor of Raymond Baptist Church in Raymond, New Hampshire, recommends offering well defined volunteer opportunities. “People are much more receptive to targeted volunteer requests with specific job descriptions, time requirements and duration of service needed. For example, ‘We need one teacher for eight weeks. It will require one hour of preparation and one hour of teaching each week.’”

Scott Ridout, president of Converge Worldwide, said, “I see greater effectiveness in churches that have included serving as part of their definition of maturity, defined it as a value and have developed a clear, accessible pathway to involvement. The service capacities of any church are greatly influenced by their leadership.”

The Evangelical Leaders Survey is a monthly poll of the Board of Directors of the National Association of Evangelicals. They include the CEOs of denominations and representatives of a broad array of evangelical organizations including missions, universities, publishers and churches.

This survey summary can be found at NAE.net.



# Christian EDUCATION & COLLEGE EXPO

**Saturday, March 5 • 9:30am – 2pm**

At Colonial Presbyterian Church • 9500 Wornall, KCMO

**25 K–12 Schools, Homeschool  
50 Colleges from 15 States!  
Watch for more details!**

## Thanksgiving DVDs

Can't move from all the turkey and pumpkin pie? Sit back and enjoy one of our favorite Thanksgiving-themed movies

Available on streaming services like Netflix or Amazon Prime, broadcast on cable or checked out through your local library, there are some great movies available to enjoy with your family over Thanksgiving weekend. **PLYMOUTH ADVENTURE** (1952) (no rating) – Spencer Tracy is the captain of the Mayflower as it makes its way across the Atlantic Ocean to a new home in America. Still a classic film. Gene Tierney also stars.

**MAYFLOWER:** The Pilgrim's Adventure (1979) (no rating) – This made-for-television film stars Jenny Agutter and Richard Crenna



in another version of the Pilgrim's crossing the Atlantic Ocean to build a new life.

**MIRACLE ON 34TH STREET (1947)** (no rating) – A classic film with Margaret O'Brien and Edmund Gwenn at the beginning of the Macy's Thanksgiving Day Parade.

**AVALON (1990) (PG)** – Director Barry Levinson gives a heart-warming story of immigrants who try to achieve a new

■ See DVDs page 20

## HEART OF AMERICA CHRISTIAN COLLEGE & THEOLOGICAL SEMINARY

Accredited Degrees: Associate - Doctorate;  
Bible: Pastoral Studies; Christian Counseling,  
Church Administration, Christian Education

[www.heartofamericaministries.com](http://www.heartofamericaministries.com)  
Email: [info@heartofamericaministries.com](mailto:info@heartofamericaministries.com)

  
**FIORELLA'S  
JACK STACK  
BARBECUE**  
AN EXPERIENCE  
BEYOND YOUR  
EXPECTATION

[facebook.com/jackstackbbq](https://www.facebook.com/jackstackbbq)

[twitter.com/jackstackbbq](https://twitter.com/jackstackbbq)

[instagram.com/jackstackbbq](https://www.instagram.com/jackstackbbq)

**MARTIN CITY**  
135th & Holmes Rd.  
(816) 942-9141

**OVERLAND PARK**  
95th & Metcalf Ave.  
(913) 355-7427

**COUNTRY CLUB PLAZA**  
Wyandotte & Ward Hwy  
(816) 591-7427

**FREIGHT HOUSE**  
22nd & Wyandotte  
(816) 472-7427

**SUMMIT WOODS CROSSING**  
50 Hwy & NW Pryor Road  
(816) 621-7427  
Opening Spring 2015

## The LIGHT House

Working to ensure every human heart is cherished...  
within the womb and within strong families



**Pregnant?  
Scared?  
Need Support?  
We Can Help!**

24/7 Hope Line:  
**816-916-4434**  
[lighthousekc.org](http://lighthousekc.org)

**find us on  
facebook**  
facebook.com/metro voice news

**HMH Autosport**

**See Us For  
Quality Low-Mileage  
Vehicles.  
All Makes & Models!**

- SERVICE • SALES
- SAVINGS

Check us out today!

www.hmhaautosport.com

**713 S. 291 Highway  
LEE'S SUMMIT  
816-525-0930**

## Artists honored at annual Dove Awards



**D.C. JEANES**  
Metro Voice  
music critic

### musicscene

The 46th Annual GMA Dove Awards ceremony aired last month, and here's a list of some of the winners this year:

Phillips, Craig, and Dean won this year's award for Inspirational Album of the Year, for "Above It All."

Pop/Contemporary Album of the Year went to For King and Country, for their



release "RUN WILD. LIVE FREE. LOVE STRONG."

Alabama won the award for Bluegrass/Country Album of the Year, "Angels Among Us," while Hillsong Worship was awarded Worship Album of the Year for "No Other Name."

American Idol alum, Colton Dixon,



won the award for Rock/Contemporary Album of the Year, for "Anchor," while modern hard rock heroes RED won Rock Album of the Year with their "Of Beauty and Rage" release.

In other music news, Kutless is expected to release their newest offering, "Surrender," at the end of this month. This will be their ninth studio release.

Sara Groves will also be releasing a new album this month. Titled "Floodplain," this album is said to be a very personal and deep collection of songs for Groves.

"One main idea that appears a few times on the record is reality and escape," Groves said, recently. "Joy and sorrow are



both mixed in our cup. We can see our reality as a burden and try to escape it, or we can drink our cup."

A commentary track shared with her husband, Troy, where they discuss each song is now available with a pre-order of the album.

### DVDS

continued from page 19

life in America, including a new holiday, Thanksgiving. Stars Aidan Quinn.

PLANES, TRAINS AND AUTOMOBILES



**(1987) (PG 13)** - A John Hughes film, this more-on-the-adult-side film tells the story of two men, Steve Martin and the late John Candy, caught in the holiday traffic

rush, who must join forces to reach home for Thanksgiving.



**THANKSGIVING ON WALTON'S MOUNTAIN (1982) (NO RATING)** - From the popular television series, this story is of Walton family members trying to reach home

for Thanksgiving.



**SQUANTO: A WARRIOR'S TALE (1994) (PG)** - Adam Beach is Squanto, an Indian warrior who is stolen away to Europe, returns to America and meets the Pilgrims.



**RUGRATS THANKSGIVING (1997) (NO RATING)** - An animated film of the popular comic strip characters who learn the meaning of Thanksgiving;



**A CHARLIE BROWN THANKSGIVING (1973) (NO RATING)** - another classic children's animated film with the popular comic strip characters of Charlie Brown, Snoopy, Linus and the rest trying to prepare a Thanksgiving meal.



**MOUSE ON THE MAYFLOWER (1969) (NO RATING)** - This is an animated story of a stowaway mouse on the Mayflower who encounters a new life in America.

- Compiled by Marie Asner

**Quality  
Christian Talk Radio**

**92.3FM 760AM 101.5FM**

**BOTT RADIO NETWORK**

BroadcastMinistries Find Stations Nationwide. Download Apps. Listen Live. Worldwide • botttradionet.com

(from left) Jim Daly, Focus On The Family; Chuck Swindoll, Insight For Living; John MacArthur, Grace To You; Jesse Hunt, Hope in the Night; Alister Begg, Run For Life; Tony Evans, The Alternative with Dr. Tony Evans; James MacDonald, Walk in the Word; David Jeremiah, Turning Point; Adrian Rogers, Love Worth Finding; Crawford Little, Legacy Ministries. And More! Visit BRN Online for Program Schedule.

**POSITIVE, ENCOURAGING**

**KLOVE 97.3**

**KLOVE RACING**

KNOWLEDGE TO FUEL YOUR LIFE

Play online at **KLOVERACING.com**

**KLOVERADIO** **KLOVEKANSASCITY** **KLOVEKANSASCITY**

**— The Best —  
Fine Dining Experience  
on Wheels**

**Kansas Belle  
DINNER TRAIN**

**TAKE A NOSTALGIC TRIP  
BACK TO THE 1940'S.**

Whether it's a romantic Saturday night or a casual Sunday afternoon with the family, you'll experience beautiful scenery on a round trip departing from the Baldwin City Depot. You may also enjoy an optional murder mystery, WWII USO show or a melodrama.

**By Reservation 785-594-8505 | 1-800-942-7245**  
kansasbelle.com

**Red Bridge Baptist Church**

4901 E. Red Bridge Road  
KCMO 64137  
(corner of Red Bridge & Grandview Roads)  
816-761-1194 www.redbridgebaptist.org

- Savior-Sensitive!
- Conservative in Theology!
- Wholesome in Ministry!
- Traditional in Worship!
- Expository Preaching!
- Missions-Minded!
- Emphasizing the Great Hymns of the Faith!
- Full A/WANA Program (including JV & Varsity!)

Red Bridge Baptist Church - For those desiring a substantial church life!

# health & wellness

...know ye not that your body is the temple of the Holy Ghost which is in you, which ye have of God...



**VAUGHN LAWRENCE**

Owner, Spiritual Health

designed for health

## A FLU-FREE WINTER

Have you ever wondered why everyone seems to get sick more often in the winter? There is actually very good reason for that, so let's learn why so we can prevent colds and flu's this year and maybe prepare better for next year.

Your immune system is designed to fight infections. Many people encounter

bacteria, virus, molds, parasites, etc and rarely get sick. Others seem to catch everything going around and get sick monthly. Why can some people in a family "catch the flu" and others in the same family do not? The reason is because germs, viruses and bacteria do not cause illness. Yes, that is not a typo. If germs caused sickness and disease everyone would be sick, dying or already dead! So what really causes someone to get sick?

What determines whether or not someone gets sick is the strength of their immune system. If we do catch a cold, flu, chicken pox or even mumps or measles, this should be nothing to fear.

Our medical system has used fear to push vaccines for decades. Many grew up and went to a "chicken pox party" to intentionally catch the virus and build immunity. Your system is designed to build natural immunity by encountering vari-

ous germs, allowing the immune system to do its job, and you are stronger for it. Our young girls have been sick a couple times, and we allowed nature, that would be God, to do what it was designed to do and we move on.

But what if a child or adult is getting sick weekly or monthly, or even has chronic ear infections, sinus infections, bronchial infections, etc. This is definitely not normal and signs of a weak immune system. Drugs, vaccines and antibiotics are definitely not the answer, but often used by parents for lack of wiser choices. We have lost the ancient wisdom of strengthening

our immune system and learning natural methods to quickly eliminate sickness from the body.

So the first question is why is the immune system so weak?

■ We are indoors playing video games and watching TV when life used to be lived outdoors in the fresh air and sunshine

■ We don't eat natural foods God created, instead

eating candy, soda, donuts, fried foods, fast food, white flour and white sugar, which damages and weakens the immune system

■ We use antibiotics, aspirin, birth control, steroid drugs, pain medications etc., which weakens the immune system because they are man-made and work against God's design of the body

■ We have more chemicals in our world than ever before in human history

So how do we restore a healthy immune system to avoid getting sick?

■ For ear infections, use food grade H2O2 in the ears. 1-2 drops each ear morning and night. This has worked for our daughter twice when she started pulling on her ear. No infection ever developed. This is so simple, and sad when kids are damaged by antibiotics, tubes in the ears and other unnecessary medical treatments when the solution costs a few cents. You also can use garlic olive oil in the ears.

■ Sinus infections should use something that KILLS FUNGUS; not flonase, antibiotics or surgery. You can find sprays with oregano and other God-created anti-microbials that do not damage the body.

■ SUNSHINE should be built up in the summer. Yes, you should be TAN going into winter. I am so glad we are going to Hawaii this Christmas! (-: (my wife was born and raised there). If not, your immune system will suffer and you must take vitamin D. Take a minimum of 5,000IU and be sure it is not synthetic!

■ Elderberry stops viruses from replicating. Oregano and garlic kills all bacteria, viruses, fungus and molds. Colloidal silver works well. Colostrum from grass-fed cows builds the immune system.

It is MORE important to eat well, exercise, take your herbs and build your immune system in the winter because we are more vulnerable.

Flu shots have NO PROOF AT ALL (ask your doctor for proof or studies) that they work and they are loaded with toxic chemicals. I vote to choose God's way this winter. God loves us much more and is much more gentle than the man-made approach.

—Vaughn Lawrence is a natural health care practitioner, herbalist and owner of Spirit of Health who lives by their motto: "We Love God. We Love People. We Love Health. [www.spiritofhealthkc.com](http://www.spiritofhealthkc.com).



**Dentistry For the Family**  
Eugene F. Anderson, D.D.S.  
13010 Fuller Ave.  
Grandview, MO 64030  
**816-966-0202**  
[www.efadds.com](http://www.efadds.com)  
8:00 - 5:00 • Closed Fridays  
Serving the S. Metro area for 32 years.

**We listen...and treat you like family.**  
"Do to others as you would have them do to you." — Luke 6:31

**PHC Pleasant Hill Chiropractic**  
Dr. Corey Piva  
EXPERIENCED • CARING • EFFECTIVE

Chiropractic • Acupuncture • Laser Therapy  
• Nutritional Supplements • Massage Therapy  
• Sports Injuries • Computerized X-Ray  
• Spinal Decompression • Reflexology

**816-540-8932**  
1805 N. 7 Highway.  
Pleasant Hill, MO  
[pleasanthillchiropractic.net](http://pleasanthillchiropractic.net)

**2016 CALENDARS ARE HERE!**  
Bible Covers and more  
20% off any item with ad.  
one item with coupon

**BEACON BIBLE & BOOK STORE**  
517 Main Street • Belton, MO • 816-331-8974  
Hours: Mon.-Fri. 9 to 6 • Sat. 9-5 • See our Facebook Page!

**Why Wise Families Plan**  
To learn why visit [www.lewislivingtrust.com](http://www.lewislivingtrust.com)

**FREE Estate Planning Seminar**

Avoid Probate • Maximize Your Tax Protection  
• Preserve Family Harmony

**NO COST NO OBLIGATION**  
**Thursday, Nov. 5**  
**Tuesday, Nov. 17**

**Bill Lewis**

**Lewis Living Trust Center**

For reservations call: 816-524-3200  
[LewisLivingTrust.com](http://LewisLivingTrust.com) • 700 NE Langsford Rd., Lee's Summit



## A NEW KIND OF HEALTH STORE

Our store offers you a family friendly experience where you can find the lowest prices on your health supplements in Kansas City, even comparable to the internet.

We believe God created all things perfectly and we want to honor His creation, all our products are as natural and close to the way He created them.

Please join us for a cup of complimentary tea and browse through our selection of bulk herbs, teas, superfoods, healthy snacks and whole food supplements.

Located one block east of Interstate 49 on Main Street in Grandview, MO. We can't wait to meet you!

**10% Off ENTIRE purchase! Mention Ad.**



**Healing by Design Series (A-Z through every disease condition from a Biblical viewpoint)—**  
Mondays, 11am on-going

**Herbal Remedies Series—Thursdays, 11am—on-going**  
**Partnering With God Series—Wednesdays, 6pm**  
through November 11th

**Tea Time with Vaughn—First Saturday of each month**

**816-492-5648**  
**5901 Main St., Grandview**  
**[www.spiritofhealthkc.com](http://www.spiritofhealthkc.com)**

**STORE HOURS:**  
10 am — 7 pm Monday — Friday  
10 am — 4 pm Saturday

## ARROWHEAD

continued from page 1

We talked about providing a worship opportunity for fans who typically would go to church on Sundays," Kelley said. "We got the permission and blessing of the Chiefs, and the response has been phenomenal.



KELLEY

"We have a worship band and just teach from the Bible, share our testimonies and offer people an opportunity to pray for them. We are nondenominational and encourage people to come as they are."

Kelley previously was spiritual development pastor at Grace Church in Overland Park. He built a relationship with several Chiefs players who attended the church,



including Dustin Colquitt, Matt Cassel and Brady Quinn. The team's chaplain left during the 2013 preseason, and the team asked Kelley to speak.

"After the first chapel, they asked me to be their speaker for the season," he said. "I said if you just want me to speak, I probably am not your person. I'm a pastor. I told them if you want me to shepherd these

men and tell them what they need to hear instead of just what they want to hear, then I'll do it. They joked that NFL stands for 'Not For Long', but it has been a great relationship."

Kelley left his position at Grace and raises his own support through Athletes in Action. The organization provides chaplains for 15 NFL teams, as well as for the



Super Bowl, owner meetings and other events. In addition to pregame chapels, Kelley leads a Bible study for Chiefs coaches on Friday mornings.

Although he doesn't travel with the team, he arranges speakers for chapel services on the road. He found a Christian rugby player from Wales to speak at the Nov. 1 game against the Detroit Lions in London.

Launching the service for fans was simply a matter of seeing a need and filling it.

"We planned to hold services at Kauffman Stadium until the Royals made the World Series during the week of our first service," Kelley said. "Who would have guessed? The Arrowhead Pavilion happened to be open, so we took it."

A "street team" starts walking the parking lot at 7:30 a.m. on game days, passing out flyers and offering free coffee and doughnuts. Services begin at 9:30 a.m. and last 45 minutes, leaving fans plenty of time to tailgate and be in their seats by kickoff. Kelley and Casey optimistically set up 350 chairs, and all are filled.

"We didn't know what to expect when we started," he said. "It was like making spaghetti – we threw things against the wall to see what would stick. One person said his family has been season ticket holders for 42 years, and this was the best thing the Chiefs have done."

A diverse group of fans attends services, including members of the Hunt family, which owns the Chiefs.

"We have Protestants, Catholics, atheists and everyone in between," Kelley said. "One atheist said, 'I don't believe what you believe, but I believe in what you are doing.'"

Congregations from across the city are invited to participate. Remaining chapels for this season include:

- Nov. 29: Gregory Ealey, pastor of Paseo Baptist Church, and the Paseo Baptist Church worship band.

- Dec. 13: Tim Howey, executive pastor of Grace Church, and the Grace Church worship band.

- Dec. 27: Christian Newsome, pastor of Journey Church International, and the Journey Church International worship band.

Kelley believes God has placed him in his current position to influence the influencers, which can have a multiplier effect on society.

"I have an opportunity to speak into the lives of athletes, their wives and families, and the organization," he said. They have such a network and platform to share the gospel. I help train them to articulate their testimonies and possibly reach millions."

### more information

**Although Kelley has a hectic schedule during football season, he is available to speak to churches and businesses in the offseason. For more information or to book a speaking engagement, please visit [www.phillipkelley.net](http://www.phillipkelley.net).**

# classified

Place your classified ad with the Metro Voice! Call today: 816.524.4522

Ads are just \$10 for 20 words, then 25 cents per word after that. Call 816-524-4522 today!

**CAREGIVER. CNA.** Home Health Care Professional provides TLC in the comfort of the client's residence. Available 24 hrs or part-time. Budget friendly. Excellent References. 25-years of Seasoned Experience. Non-smoker. 816-806-8104.

**CAREGIVER.** I provide in-home assistance with everyday activities for the elderly and disabled. 25 years' experience. Excellent references. Call Jo. 816-286-8468.

**MUSIC WORSHIP LEADER.** 5 hours (\$70) week. Wyandotte County Church. More information: [larry.s.keller@gmail.com](mailto:larry.s.keller@gmail.com)

**INDEPENDENT BEAUTY SALES CONSULTANTS** Cosmetics, Beauty, Skincare, Jewelry and Apparel. 913-648-4632 <http://michellebarnes.avonrepresentative.com/>

**PRIVATE VIOLIN LESSONS.** Beginner and intermediate private violin lessons available through seasoned symphonic youth/teen who's been playing since she was a toddler. \$10 per lesson. 30 minute lessons on Tuesday afternoons between 3 and 5 p.m. during the month of June. Must have your own violin. Contact Meyana at 816.550.1005 to sign up or for more information.

**DAYCARE.** The Sheepfold Daycare provides summer childcare Monday - Friday 7am-7pm. Limited evening and weekend slots. Call Dorie at 913-660-3191. <http://thesheepfolddaycare.weebly.com/>

**CHRISTIAN COUNSELING SERVICES.** 7029 W. 74th St., O.P., KS. For families, couples and individuals. For appointment call Dorie 913-660-3191. <http://scofielddorie.wix.com/counseling>.

**AVAILABLE FOR CHURCH CHILDCARE** References available. Stay at home Mom. 816-322-3345 or 816-769-8593.

**IN THE KNOW AND ON THE GO**  
Kansas City Bargains  
All around the metro  
[www.kcbbb.com](http://www.kcbbb.com)

**BRUSHLESS AUTOMATIC WASH**  
featuring **ZERO SPOT RINSE**

**Self-Service Bays**  
with **BUSTER BRUSH**  
and **Detail Areas**

**OTTO CAR WASHES**  
8669 E 63rd St just east of I-435  
6545 Troost just south of Midway Blvd  
920 E 23rd St just east of Washburn  
2163 NW 7 Hwy just north of I-70

UNLIMITED CAR WASHING available at our BLUE SPRINGS LOCATION  
[www.ottocarwashes.com](http://www.ottocarwashes.com)

Open 24 Hours  
Major Credit Cards Accepted  
4 KC Metro & 2 Topeka Locations

**FUTUREWARE**  
Computer Consulting  
Repair  
Networking  
On Site  
A+ Certification

**BAILEY NETWORK**  
**PAUL BAILEY**  
706 NE Coronado St.  
Lee's Summit, MO 64086  
Phone: 816-246-7507  
Email: [paul@consultmark.net](mailto:paul@consultmark.net)

Gateway, Dell, IBM, HP/Compaq, desktops & laptops

ALSO: WEB DESIGN & DEVELOPMENT

**OTTO SERVICE**  
YOUR HONDA & ACURA EXPERTS  
FAMILY OWNED AND OPERATED  
SERVICING HONDA & ACURA AUTOMOBILES SINCE 1977

*New Customers receive \$15 off their first visit (oil changes excluded).*

816.358.4454 9301 BLUE RIDGE BLVD.  
WWW.OTOSERVICEKC.COM KANSAS CITY, MO, 64138

Find us on Facebook

After Hours Drop Off



**Relax. Rediscover. Reconnect.**  
at Branson's Award-Winning Hotels

Myer Hotels offers six of the best Branson hotels featuring Comfort Inn, Best Westerns & Holiday Inn Express. Enjoy our indoor pool, hot tub, free hot breakfast, free WiFi, ticket service and more! Christian owned and operated. Call us today or visit us online at [MyerHotels.com](http://MyerHotels.com).

**1-877-ITSATRIP**  
(816-26574)

**SAVE 15%**  
per room per night  
Present this ad to get the Preferred Value Rate.

Subject to availability. Not valid with other discounts, holiday weekends or special events. Code: MYR

## DEVELOPERS HELPERS

- Top Soil
- Pulverized Top Soil
- Garden Mix
- Fill Dirt/Clay
- Decorative Rock
- Bulk Mulch in Black, Brown, Ruby Red, Cedar
- Sand & Gravel
- Excavation
- Hydro Seeding
- Erosion Control
- Dump Truck & Bobcat



Call us today  
for all your outdoor needs!  
**816-697-2345**  
816-918-4631

**DEVELOPERS HELPERS**  
Corner of 7 & 50 Hwys  
Just East of Lee's Summit

[www.developershelpers.com](http://www.developershelpers.com)

**Big to BIGGER.**  
NOW OPEN  
530 N. 7 Hwy • Blue Springs • 229-3108  
(In front of Hobby Lobby)

**Black Angus Burgers • Blue Plate Specials  
Sandwiches • Big Salads • Breakfast All Day**

**Every Wed. Seniors  
Get a 20% Discount!**  
Monday thru Saturday:  
6:30 am to 2:30 pm  
Sunday: 7:30 am to 2:30 pm

**The Big Biscuit**  
Eat Big, Live a Full Life.

16506 East 40 Highway  
Independence, MO  
**816-478-6958**

# opinion

dwright@metrovoicenews.com

SHARE YOUR OPINION WITH US. IT'S EASY!

dwright@metrovoicenews.com • twitter.com/metrovoice

facebook.com/metrovoicenews

## THE IMPORTANCE OF THANKSGIVING



**ALLISTER BEGG**

Senior Pastor of Parkside Church in Cleveland and Host of Truth for Life

### viewpoint

Thanksgiving should always follow answered prayer, just as the mist of earth's gratitude rises when the sun of heaven's love warms the ground.

Has the Lord been gracious to you and inclined His ear to the voice of your prayer?

Then thank Him as long as you live. Let the ripe fruit fall upon the fertile soil from which it drew its life. Do not fail to sing in praise of Him who has answered your prayer and has given you the desire of your heart.

To be silent about God's mercies is to incur the guilt of ingratitude; it is to act as poorly as the nine lepers who after they had been cured of their leprosy did not return to give thanks to the healing Lord. To forget to praise God is to refuse to benefit ourselves; for praise, like prayer,



is one great means of promoting the growth of our spiritual lives. It helps to remove our burdens, to excite our hope, to increase our faith.

It is a healthy and invigorating exercise that quickens the pulse of the believer and prepares him for new enterprises in his Master's service.

To bless God for mercies received is also the way to benefit our fellow men; "let the humble hear and be glad." (Psalm 34:2) Others who have been in similar

circumstances will take comfort if we can say, "Magnify the LORD with me, and let us exalt his name together. . . . This poor man cried, and the LORD heard him." (Psalm 34:3, 6) Weak hearts will be strengthened, and sagging spirits will be revived as the saints listen to our "shouts of deliverance." (Psalm 32:7) Their doubts and admonish one another in psalms and hymns and spiritual songs. They will also "sing of the ways of the LORD" (Psalm

138:5) when they hear us magnify His holy name.

Praise is the most heavenly of Christian duties. The angels do not pray, but they do not cease to praise both day and night; and the redeemed, clothed in white robes, with palm branches in their hands, are never tired of singing the new song, "Worthy is the Lamb." (Revelation 5:12)

—Alistair Begg is the host of Truth for Life, a Bible-teaching ministry seeking to faithfully proclaim the Word of God.

**metro VOICE**

#### PUBLISHERS

Dwight & Anita Widaman

#### MANAGING EDITOR



**Dwight Widaman**

dwright@metrovoicenews.com

#### COMMUNITY EVENTS EDITOR



**Anita Widaman**

metrovoicecalendar@gmail.com

#### EDITORIAL SUPPORT

Contributing Editors: Dan Jeanes, Kharissa Forte, Alan Goforth.

Metro Voice © 2015, is an award-winning newspaper published monthly by Widaman Communications, Inc. MV is available primarily by mailed, bulk and subscription distribution to the congregations of 700 churches, colleges, bookstores, libraries, businesses and other locations. Complimentary distribution is available as a service to the community. Individual subscriptions are available for a donation of \$25 per year. Postage is First Class. Written materials submitted to MV become property of Widaman Communications. The content of this publication, including all stories, advertising or other graphic symbols, may not be reproduced in any way, shape or form for commercial purposes or added to any web site without the express permission of Widaman Communications. Advertising in MV is open to anyone wishing to reach the Christian community. MV reserves the right to refuse any advertising deemed unsuitable.

Metro Voice is a charter member of the Christian Newspaper Association, Fellowship of Christian Newspapers, Midwest Christian Media Association and member of the Evangelical Press Association



#### MAILING ADDRESS

P.O. Box 1114  
Lee's Summit, MO 64063

#### OFFICES

816.524.4522 | Fax: 816.282.0010  
email: dwright@metrovoicenews.com  
Calendar:  
metrovoicecalendar@gmail.com  
Web: metrovoicenews.com  
facebook.com/metrovoicenews  
twitter.com/metrovoice

## A greatness that descends



**DR. DAN ERICKSON**

Chief Servant Leader of the People Matter Ministries

### viewpoint

We were in the middle of a Sunday evening service when a drunk stumbled into the church. My dad was leading worship. The man staggered all the way down the aisle until he literally fell on his knees at the altar.

My dad immediately turned the service over to my mom, walked across to the desperate man, and knelt down beside him. As dad put his arm around the man and prayed for him, the man began to weep. As my dad entered into his pain, despair, and suffering, he was able to lead the man to Jesus Christ.

From where I sat observing, I saw only a smelly, nasty drunk. But my dad saw a man without a shepherd, felt compassion for him, and entered into his pain. (Mk 6:34)

**Your Love + Your Humility + Your Service = True Servanthood**

Looking back, I now know what I saw at that altar years ago: greatness descending. You will never be as great as when you are descending, becoming a servant. If we are going to become truly great we

have to have a greatness that is willing to descend with an attitude of true humility.

Paul wrote to the Philippians about the attitude of true servanthood. Your attitude should be the same as that of Christ Jesus: Who, being in very nature God, did not consider equality with God something to be grasped, but made Himself nothing, taking the very nature of a servant, being made in human likeness. (Philippians 2:5-7)

The kind of servanthood that Christ—and my dad—demonstrated was countercultural. Descending is normally reserved for losers, cowards, failures, and the weak. Our society tells us to avoid this at all costs. Ascending is reserved for winners, heroes, the successful, the strong, and the proud. Choosing to serve others is weak!

There is a contradiction between the culture's view and God's view. The culture says, rise to the highest level of your company, rake in a lot of money, succeed at what does not matter and you will be called great. The only direction is up!

God's view is the true way to eternal success: True greatness is not a measure of self-will or self-achievement but rather self-abandonment. The more you are willing to give up, the more you truly gain. Succeeding at what really matter is choosing to become a servant.

Just before the Last Supper, in John 13 Jesus demonstrated true love, humility, and servanthood to His disciples by



washing their feet. He closed with this statement:

**"You call me 'Teacher' and 'Lord,' and rightly so, for that is what I am. Now that I, your Lord and Teacher, have washed your feet, you also should wash one another's feet. I have set you an example that you should do as I have done for you. I tell you the truth, no servant is greater than his master, nor is a messenger greater than the one who sent him. Now that you know these things, you will be blessed if you do them." (John 13:13-17)**

This demonstration by Jesus was not just about washing feet. It was about love, humility, and service. The role of the servant is not only the best way to live, but the only way to live. When you begin to

practice servanthood, you live the way of the cross. You become a living sacrifice, holy and acceptable in God's sight.

Servanthood is about position that is worked out after love and humility are worked in. It is how we seek to live out our potential and our destiny. When we demonstrate unconditional love, unapologetic humility, and uncompromising servanthood, we will live a life that will descend into true greatness.

Are you willing to lose it all in order to gain it all? Are you willing to descend in order to ascend? Moving down is the only way to become great in God's eyes, and nothing else matters. It is not the best path to greatness; it is the only path to true and eternal greatness. It is only then you can **imagine His possibilities!**

DRAMATIC TRUTH BALLET THEATRE PRESENTS



THE MYSTERY OF  
*Christmas*

**DECEMBER 18-20, 2015**

GOPPERT THEATRE AT AVILA UNIVERSITY  
DRAMATICTRUTH.ORG

**THE NUTCRACKER THAT TELLS THE TRUE STORY OF CHRISTMAS**