

2023 Christian Education and College Guide



C O L L E G E G U I D E

4 Reasons Students Choose a Christian College

So you're trying to decide between a secular university and a Christian college. The decision can be a hard one; it concerns your future career, your social life, and your happiness for the next few years.

When you choose a Christian college, you make an affirmative decision to develop yourself both professionally and spiritually. Christian colleges provide the same choice of majors and excellent education found at secular universities, but bring something more to the table: fellowship, discipleship, and a sense of purpose. Below you'll find four reasons why students across the United States choose a Christian college.

1. Education at the Highest Level

A Christian college produces more than graduates and qualified job applicants – it sends disciples out into the world. A faith-based school sends its students into the entire range of professional fields, from business to government to non-profit to church life. And then those students represent Christ in those same fields.

As such, a Christian college takes your education seriously. Christian universities know just how high the stakes are in producing Christian leaders, in producing college-educated disciples. When the faculty and administration send you out to represent the faith, they want you

equipped, representing the Gospel well through your witness of intellect and excellence.

For this reason, you'll find academic standards at a Christian college as – or even more – rigorous than any secular college.

2. A Christian View in the Modern Classroom

At a Christian college, you'll find a biblical perspective on every subject taught. Professors at Christian universities will bring you the same current, expert instruction found at secular schools, but reinforced and refined with timeless Truth.

To study history at a Christian college is to observe and interpret God's unfolding plan in human affairs. To study information technology is to consider how we might be wise stewards of the power science gives us. To study criminal justice is to ponder God's purpose in establishing civil authorities.

Properly understood, every course can reveal the nature and character of God, and a Christian college will search for the deeper truths in every subject.



3. Fellowship to Feed Your Soul

The friends you make in college will wield a serious influence on your life, and you'll find friends at a Christian college who share your values, your commitments, and your passion for God. Imagine sharing your college years with friends who want to see you grow in your walk with the Lord, who want you to find God's calling. Rather than college being a time of temptation, college could be a time when your social relationships spur you on to greater righteousness.

4. How Firm a Foundation

The world as we understand it through science constantly changes. Research and theory that were taught as fact in one era can give way when new data is discovered in the next.

A good college is obliged to teach its students the latest in science and scholarly advances, but a Christian college will place the truths of science in the greater context of God's timeless Truth. While keeping

pace with the most current thinking on any subject, a Christian college will never be moved from the unchanging truth of providence by an intellectual fad.

At a Christian college, you will learn the facts in light of the Truth.

There's no time in your life like college. You'll never work harder – and you'll never have more fun. And when you pursue a Christian education, you can find a closer relationship with God while you find yourself.

Can I Afford a Christian College?

You would be surprised at the answer if you set your mind to it

by Kristin Hernandez

Unfortunately, many students are terrified by the thought of paying for a private college. At least once a day, I hear the comment, "I'd love to go to this university, but I do not think I can afford it." Some students are so convinced that they cannot afford a Christian college that they do not even apply.

I completely understand this fear. As a high school senior, I was very intimidated at the thought of paying for college. I wanted to go to a Christian college and I had heard rumors that these schools were expensive. I was clueless when it came to scholarships and the term "FAFSA" was nothing more than gibberish to me. Fortunately, the admissions counselor at my college of choice was an expert and quickly opened my eyes to the possibility of

affording a private Christian education.

Yes, the Christian institution that you are considering may have a higher sticker price than your local state college. However, many people do not realize that the final cost may be quite different once financial aid is factored in. Many Christian colleges and universities offer various types of financial aid, which help cut down costs and could make attending your dream school a reality!

As you begin to contemplate costs, there are a few tips to try and factors to consider:

Complete your FAFSA (Free Application for Federal Student Aid) regardless of your financial status. The FAFSA could potentially provide you with thousands of dollars in federal or state aid. Even if you do not qualify for government aid, some colleges offer their own need-based



grants, which are based on the information provided on your FAFSA. Your college may have a different standard of "need" than the federal government and you may qualify for more than you expect.

Talk to your Admissions Counselor and/or Financial Aid Counselor to find out what institutional scholarships are offered by their respective college. Most colleges offer academic scholarships to stu-

dents who have achieved a particular GPA and/or test score. In addition, many colleges offer scholarships to students who are involved in a particular major or extracurricular activity. You may also want to ask about scholarships for children of alumni, children of pastors, or any other opportunities that may be unique to your particular college.

Apply for private scholarships. These are scholarships that are funded by private organizations. From academic achievement and essay writing, to having red hair or being left handed, there are hundreds of

private scholarships out there for things that you may have never considered! Do some research and see what opportunities are out there. A few of my favorite scholarship websites are www.fastweb.com and <http://scholarshipamerica.org/>.

Consider the investment. Attending a private Christian university is a life-changing experience unlike any other. Not only will you receive a quality academic foundation, but you will have the opportunity to learn in an environment in which students are equipped to become Christian leaders in their respective fields. Most Christian colleges offer small class sizes, personal interaction with professors, spiritual growth opportunities, and ensure that their students will graduate on time. I cannot put a price tag on my years at my university. Those four years are priceless to me.

Remember that it is always okay to contact your Admissions Office if you have questions! I guarantee you that your admissions counselor understands. We have all been there. I am praying for you and your classmates as you begin to consider these things and as you begin to prepare for this exciting new chapter in your life!



Calvary University

Are you ready to combine an excellent education with a solid discipleship experience?

Since 1932, Calvary University has been fulfilling this mission in the classroom, and outside of the classroom! We provide exceptional opportunities for education, personal growth, and discipleship to a diverse community of students. As a fully accredited institution, we offer undergraduate, graduate, and seminary programs in a wide range of disciplines, such as Bible & Theology, Ministry Studies, Biblical Counseling, Intercultural Studies, Education, Music, and Business Administration.

Within a biblically-minded environment, our students are challenged to grow academically and spiritually.

Intellectual and spiritual maturity, leadership potential, servanthood, and a strong sense of mission are levels of excellence that we strive to instill in our students throughout their college learning experience.

Outside the classroom, our students get to experience exciting opportunities that challenge them through hands-on experiential learning; this is offered through our Practical Christian Ministries Program, internships, and fieldwork.

The Calvary University Warriors compete in NCCAA DII athletics,



with men's and women's basketball, men's soccer, and women's volleyball. Extracurricular performing arts opportunities include chapel worship teams, chorale, ensembles, and theatre productions each semester.

Whether you are interested in an online or on-campus college education, Calvary is extremely affordable.

With competitive tuition rates

and many institutional scholarships available, our aim is to allow our students to graduate with little or no debt. Our highly supportive community is dedicated to equipping you for life and service in the church and in the marketplace. For more information, visit calvary.edu or find Calvary University on Facebook, Instagram, and Twitter today!

Become a *Champion for Christ* at
LIBERTY UNIVERSITY



 200+ undergraduate programs	 Top 5 Best College Campuses in America (Niche.com)
 20 NCAA Division I athletic teams, 40+ Club Sports teams, and 20+ intramural sports	 95% of students receive some form of financial aid
 Nestled in the Blue Ridge Mountains in Lynchburg, Va.	 Convocation — the world's largest weekly gathering of Christian students

Come see campus for yourself!

From a few hours to a full weekend, we have a variety of visiting options to fit any schedule.

Schedule your visit today!
Liberty.edu/VisitUs

Building up the body of Christ.

AFFORDABLE.

Accredited education at a low tuition rate with scholarships available, so you can begin your ministry, career, and service with little or no debt.

BIBLICAL.

Offering more than 40 degrees in a variety of disciplines, with the Bible as the core of each one.

COMMUNITY.

A place for growth and discipleship, with a rich environment for developing friendships and relationships that will last a lifetime.

 **CALVARY UNIVERSITY**

15800, Calvary Rd
Kansas City, MO 64147

admissions@calvary.edu

816-322-3960

calvary.edu

Colorado Christian University

At Colorado Christian University you'll find nationally ranked academics, NCAA Division-II athletics, a dedication to spiritual formation, and intentional community living - all at the base of the Rocky Mountains!

CCU is a four-year, fully accredited, liberal arts university that will challenge you to think critically and creatively, lead with high ethical and professional standards, and embody the character and compassion of Jesus Christ - forming you into someone prepared to impact the world. At CCU, our faith in Jesus Christ is the very core of who we are. We are a body of believers committed to helping students grow deeper in their faith through the integration of faith and learning and through intentional spiritual formation. We are



known for our authentic Christian community of believers - faculty, staff and students alike - who invest deeply

and intentionally into each other's lives. CCU students dig deeper into their faith and they have fun doing it - through daily interactions, small groups, discipleship, sincere fellowship, and enduring traditions. All of our on-campus housing is apartment-style and we combine exceptional living with one of the lowest Resident Assistant-to-student ratios in the country, creating our one-of-a-kind community.

COLORADO CHRISTIAN UNIVERSITY
Grace and Truth

YOU BELONG HERE

100+ PROGRAMS

13 Division II Sports

4 DAYS OF CLASSES PER WEEK

TOP 2% of universities nationwide

At CCU, our professors are mentors as well as teachers, as they integrate faith into our exemplary academic programs. With opportunities to explore the nearby city of Denver plus countless outdoor adventures, there's always something new to experience here at CCU. You will study, laugh, learn meet life-long friends, and grow in your relationship with Christ. Don't just take our word for it - a campus visit is the best way to get a true sense of the community at CCU.

SEE YOURSELF AT CCU?

CCU offers a \$1250 renewable partner school scholarship for NCS graduating seniors!

CCU.EDU/VISIT

National Curriculum Program • Blacksmithing Certification
• Classes on Other Traditional Crafts and Skills

MISSOURI SCHOOL of BLACKSMITHING

MISSOURI SCHOOL OF PLAIN AND PRACTICAL LIVING SKILLS



Become the Next Generation of Skilled Craftsmen

**3100 NW Winchester Road
Cameron, MO 64429**

mo-schools.com

Missouri School of Blacksmithing

The Missouri School of Blacksmithing was opened in 2016, to provide quality hands-on instruction on blacksmithing. The Missouri School of Plain and Practical Living Skills was opened in 2021 to expand the class offerings to students. Classes are taught by Matthew Burnett or guest instructors and include leatherwork, wooden spoon carving, welding, knife making, beekeeping, bronze casting, and the various classes on blacksmithing.

Classes are usually kept to 6 to 8 students, ensuring plenty of attention to each. Every student is provided with all necessary equipment, tools and materials. All classes are open to minors; usually 13 and up, provided they are mature and accompanied by an adult.

New in 2023; a nationally recognized blacksmith certification program!

This certification is called the National Curriculum program and

is organized and accredited through the Artist Blacksmith's Association of North America (ABANA). The program is very



similar to the existing classes in that projects are based around learning the 7 basic forging operations of a blacksmith and progressing from basic to advanced projects. A Certification will be given at the completion of each of the 3 Levels. Level 1 is currently available. Whether you are a hobbyist that wants proof of your expertise, or you are serious about a career in blacksmithing, this is your ideal program!

Dordt University

God created us to glorify him in everything we do.

That's why, at Dordt University, we want to help you discover your gifts, embrace your calling, and grow alongside others who put Christ at the center.

As a top Christian university, Dordt offers more than 40 outstanding academic programs that will equip you for a lifetime of service in the kingdom of God. Our top majors include business, engineering, education, nursing, and agriculture.

Want to learn more? Here are some fun facts about Dordt:

Dordt is an engaging place to be.

Six years in a row, Dordt has been ranked the top school in the nation for student engagement by The Wall Street Journal. Dordt tied for fourth for "Best Undergraduate Teaching among Regional Universities (Midwest)" by U.S. News and World Report. This shows that Dordt faculty are committed to teaching students well.

Dordt means community.

With 89 percent of undergraduates living on campus and about 60 percent of our student body coming from outside of Iowa, students truly experience community



during their time at Dordt. Campus is a vibrant place to be on the weekends, with all kinds of athletic, worship, and student life events taking place. It's no wonder that so many students make life-long friends here.

Dordt graduates do well after college.

100% of Dordt's class of 2021 graduates landed jobs or were in graduate school within six months of graduation.

Does Dordt sound like a place you want to be? Check out Dordt.edu to learn more.

"Intentionally Christian at every level"

- Parent of recent campus visitor on their impression of Dordt University

See for yourself what's going on at Dordt University! Visit campus, and we'll even help cover travel costs up to \$100.



DORDT
UNIVERSITY
Sioux Center, Iowa

John Brown University

John Brown University is a Christ-centered university for students who want a top-notch education. JBU is ranked #1 in Arkansas by The Wall Street Journal (2022) and the best value among private universities in Arkansas, Missouri, Kansas, Oklahoma, Colorado and Texas by Money (2022).

Put Christ over all

At JBU, you'll be encouraged to follow Jesus and serve others in all areas of life. And while there are many Christian colleges, JBU's interdenominational culture is unique. Your time there will expose you to a beautiful variety of Biblical Christian traditions that will broaden your understanding of what it means to follow Christ.

Connect with others

JBU's community of good friends and caring mentors will help you thrive and enjoy life. Through chapel, campus events, small groups and more, you'll connect with others and develop lasting friendships. And your professors? They'll know your name and personally invest in your growth – academically, spiritually and professionally.



Prepare for a successful career and a life of purpose

JBU's rigorous and Christ-centered education will equip you to impress employers and make a difference in over 50 areas of study. You'll grow to better understand yourself, your relationships and your goals in light of God's call on your life.

Get help paying for JBU

It can seem impossible to pay for college, but JBU can help. Request a financial aid brochure at JBU.edu/admissions.

JOHN BROWN
UNIVERSITY

The future you starts at JBU.

www.jbu.edu



Heartland Christian College



Heartland Christian College, located in rural northeast Missouri, is fully accredited through ABHE and offers a 2-year Associate Degree. HCC offers a low teacher/student ratio of approximately 4 to 1. Here, you will know your instructors and they will know you. You won't merely be a number in a computer, you will be trained as a disciple whose life is important. Our community-based setting minimizes distractions and makes this a peaceful place to know God in a deeper way.

Engaging in biblical higher education: The Word of God is Truth and knowing the Truth and learning how to apply it to life provides the foundation that today's stu-

dents need. are a direct study and interaction with the Scripture, while all general and professional studies are taught through a biblical worldview.

Discipleship is central to the life of a follower of Jesus Christ. Classroom teaching, chapels, church attendance, and individual relationships provide opportunities to understand and embrace a life of discipleship.

Just as Jesus was a servant, HCC strives to develop the heart of a servant in each student. This is accomplished through biblical studies as well as practical applications in the local community.

Add to this the ability to graduate debt free and you will agree that HCC is worth a look!



2-YEAR ASSOCIATES DEGREE

GRADUATE BIBLE COLLEGE WITHOUT THE DEBT LOAD?

Yes, please!



HEARTLAND CHRISTIAN COLLEGE

321 Mercy St., Bethel, MO 63434
www.heartlandcollege.edu

Tuition (full-time students: 12 or more credit hours)	\$540
Residential Living (Includes 1 meal a day and housing)	\$1,100
Fees (tech, supply, activity, accident insurance)	\$225

Approximate cost per semester.

\$1,925

Oklahoma Christian University



Your story is always being written - chapter by chapter. Here at Oklahoma Christian University (OC), we believe each page is for God's purpose, which means you are destined to make an impact in the world.

OC faculty is eager and ready to help you discover this purpose and equip you with vision, skills and connections that prepare you for each new chapter in your story. We are driven by mission beyond our 102+ majors and programs. It is why OC is defined by the collective impact of our many incredible individuals. We are a passionate group of educators, learners, creators and explorers.

Rankings? We hate to brag, but OC's got'em too! We are home to

top-ranked programs - from cybersecurity to education - while also being praised as a "best value school" that is priced \$12K below the average private university nationwide. It's about quality today and a strong future ahead.

We have proven you can be unwavering in faith while undeniably top tier. You'll learn alongside accomplished professors and top-performing industry leaders, from Oxford trained theologians and NASA scientists to best-selling authors and award-winning marketing experts.

The world awaits your story! Let's write that next chapter together.

OKLAHOMA CHRISTIAN UNIVERSITY



JUST THE FACTS:

- #31** IN BEST VALUE SCHOOLS BY US NEWS & WORLD REPORT
- 13:1** STUDENT-TO-FACULTY RATIO
- 68** STUDENT ORGANIZATIONS
- +102** MAJORS AND PROGRAMS
- \$12K** BELOW THE AVERAGE TUITION FOR PRIVATE UNIVERSITIES

COME SEE FOR YOURSELF!
OC.EDU/APPLY

A photograph of a university campus. In the foreground, two large, mature trees with green leaves frame the view. Behind them, a tall, modern brick clock tower with a white upper section and a small balcony is visible. To the left of the tower, a large globe sculpture sits on a pedestal. The background shows a brick building with large windows and a green lawn. Several black lampposts with white light fixtures are scattered throughout the scene.



From the beginning, we'll challenge you to dig deep and discover your God-given passions.

Missouri Baptist University is filled with people who believe our students have the potential to change the world for the better. We are a community where you will develop lifelong friends and mentors. You will be challenged to realize your potential and clarify your path in life.

This is a place to Shine On.

Missouri Baptist UNIVERSITY



SHINE ON

mobap.edu



Southwest Baptist
UNIVERSITY | Bolivar, MO

AT SBU,
JOY is a way
OF LIFE.

COLLEGES OF
2022-2023
★ ★ ★
DISTINCTION

COLLEGES OF
MISSOURI
★ ★ ★ ★ ★
DISTINCTION

COLLEGES OF
CHRISTIAN
2022 ★ 2023
DISTINCTION

2022 2023
EDUCATION
COLLEGES
OF
DISTINCTION

2022 2023
NURSING
COLLEGES
OF
DISTINCTION

2022 2023
BUSINESS
COLLEGES
OF
DISTINCTION



Learn More!

Thanks to our Ministry Partners



BOTT RADIO NETWORK
Getting the Word of God Into the People of God



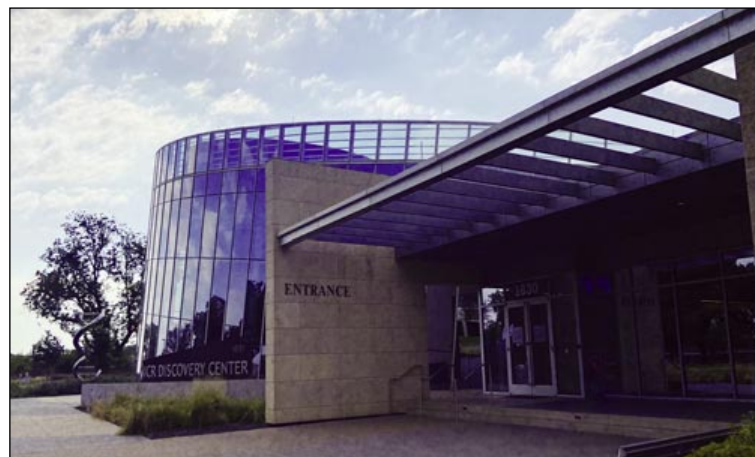
Institute for Creation Research

At the Institute for Creation Research, we believe the Bible is more than a compilation of stories or a guidebook for life. It's the fulfillment of our search for answers—who we are, where we came from, and why we're here. From creation to Jesus' second coming, everything it holds will remain true for all eternity.

The world claims otherwise, saying there is no ultimate, final truth. It's fully subjective—your "truth" might look different from mine, and yet that doesn't make either of us wrong. If there are no absolute answers, who's to determine fact from fiction?

All the conflicting viewpoints can be hard to navigate, even from a Christian perspective. If experts seem to know what they're talking about, then who are we to challenge? When it comes to science, contradicting the accepted story can feel virtually impossible. We see human evolution in textbooks, "million-year-old" rocks at national parks, and documentaries that credit natural processes for our existence. But is this really who we are? Aimless walking atoms that sprang randomly from apes?

The book of Genesis provides a different narrative. Scripture tells



us God made people in His image at creation, and we were created for a purpose—to glorify Him. No spontaneous "Big Bang" or evolving animals needed. Yet, society believes there's so much evidence showing that evolution is fact. But what does that evidence really say?

Our mission at ICR is to proclaim how science actually affirms Scripture. From carbon dating to rock formation, scientists continue to discover evidence that confirms the biblical creation account. ICR publishes scientifically based resources, holds speaking events, and does much more to illustrate God's magnificent design in creation and its complete alignment

with His Word. Through our research, we will encourage and equip you to share the truth with confidence on campus and beyond.

You don't need a Ph.D. to defend your faith. You don't have to be a biblical scholar to interpret Scripture or a scientist to find answers. All you need is a heart to know our Creator and to make Him known in a broken world. It starts with the recognition of our great need for Christ—and the knowledge that He alone can satisfy our longing for the truth.

We invite you to find us at ICR.org or visit us at the ICR Discovery Institute in Dallas.

FIND YOUR



FIND YOUR



FIND YOUR



CENTRAL CHRISTIAN COLLEGE OF KANSAS

BEGIN YOUR JOURNEY NOW!



CENTRALCHRISTIAN.EDU | 620-241-0723 | CCCTIGERS.COM

Central Christian College of Kansas

Did you know that there are over 4,000 colleges and universities in the United States, with many more around the globe? All of them are ready and eager to help you get a college degree. However, college degrees alone are no longer the answer to ensuring future success. Employers are not just looking for educated and experienced people. They are looking for men and women of strong character. That is where Central Christian College of Kansas (CCCK) steps in, because while you have many choices to help you get a degree, in reality, you only have one that will help you both obtain a degree and form the level of character that future employers are seeking.

Our unique campus environment is intentionally designed to challenge you to develop your whole person – heart, soul, mind, and strength. CCCK is a four-year collegiate institution that strives to offer Christ-centered education for the whole person.



Central is a strategically small college that offers over forty areas of residential study, a thriving online program for non-traditional students, and a distinguished graduate program. Our holistic model ensures that our students graduate with more than just a diploma but also a strong character that not only employers are desperate for but the world is craving. So, why settle for just a degree when you are worth a whole lot more? Your future awaits, discover what CCCK can do for you, as you explore your unique place in this world.

DID YOU KNOW **DIAMONDS** DEMONSTRATE A
YOUNG EARTH?



*Visit ICR's Booth
in the Main Lobby
for a FREE GIFT*

Don't Miss Out—This Talk Is for You!

“Navigating Through Faith and Science in College”

9:00–10:00 AM in the Terrace Room

Got questions about faith and science? Tag @ICRscience in a social post or send us a DM.
We might answer your question in upcoming videos or podcasts!



Get Connected with ICR @ICRscience





VISIBLE
MUSIC COLLEGE

STÖRLING

CONSERVATORY OF DANCE



**DEGREE PROGRAMS
FEATURING**

- QUALITY JUDEO-CHRISTIAN EDUCATION
- LEARN FROM PROFESSIONAL ARTISTS
- INTIMATE CLASS SIZES
- EMPHASIS ON ART, FAITH & CULTURE
- FINANCIAL AID & SCHOLARSHIPS AVAILABLE

DISCOVER THE
ARTIST YOU WERE
CREATED TO BE

BACHELOR OF ARTS
in Dance
3 YEARS, 2 SUMMER TERMS

CERTIFICATE in Dance
1 YEAR

PLAN YOUR VISIT
14808 W 117TH ST. | OLATHE, KS | 66062

AUDITION
STÖRLING CONSERVATORY
EXPERIENCE





STORLINGCONSERVATORY.COM | ADMISSIONS@STORLINGCONSERVATORY.COM

Störling Conservatory of Dance

Störling Conservatory of Dance trains and equips dancers in a community of professional artists, dancers, choreographers and educators.

In partnership with Visible Music College, Störling Conservatory offers an accredited, four-year Bachelor of Arts in Dance in just three years and two summer terms and an accredited, one-year Certificate in Dance.

At Störling Conservatory of Dance, pre-professional dancers receive advanced technical training and a quality, Judeo-Christian education in a conservatory-style setting. Each class is designed to provide students with practical skills necessary to prepare them to fulfill their artistic calling, whether that be in a dance company, ministry or other artistic venue.

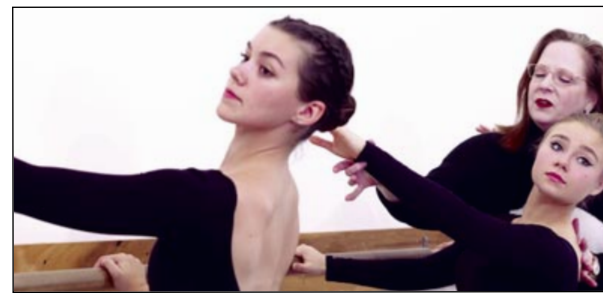
Nestled in the Kansas City metro, students are immersed in a familial community where faculty and staff are dedicat-

ed to their success not just as dancers, but as healthy human beings. Students are given the creative space to explore their giftings, refine their ability to communicate artistically and thoughtfully and discover the artists they were created to be.

Enrollment in Störling Conservatory begins with an audition. Upon acceptance, students will be invited to submit a college entrance application.

Störling Conservatory of Dance and Visible Music College are committed to providing quality education at an affordable cost. Students have received scholarships of up to \$10,000.

To learn more or audition, visit storlingconservatory.com or email admissions@storlingconservatory.com.



**OBU exists to
equip the next
generation of
future shapers
to live all of life,
all for Jesus.**



OKBU.EDU



Oklahoma Baptist University

Located just outside of Oklahoma City, OBU is the perfect balance of small-town charm and big-city opportunity.

Small class-sizes, relationship-driven faculty, and state-of-the-art facilities help OBU to equip students to impact the world for God by discovering and developing their talents. Our students are challenged to think, speak, create, and engage in new ways. Upon graduation they demonstrate both competency for the tasks at hand and creative problem solving to cast vision for the future. Our reputation is true – OBU alumni are future shapers.

While at OBU, our students experience some of the most exciting, challenging, rewarding, and transformational years of their lives. They discover new passions and develop their God-given abilities. They grow deeper in relationship with Christ, meet and interact with people from all over the world, and develop life-long relationships with peers and mentors. They join a thriving community attending athletic competitions, fine arts performances, and numerous other on-campus activities, as well as exploring all of God's creation – beginning with the great state of Oklahoma.



Southern Nazarene University

Since 1899, Southern Nazarene University has set the standard for innovative servant leadership. Through service-oriented classrooms to a vibrant campus community, 15 Division II athletic programs, competitive internships, and high job placement, we lead by example.

At SNU, the hospitality runs deep. We're working constantly to make your college experience all it can be. Academic departments offer opportunities that enhance your learning -- things like a music recording studio for Production, a MakerSpace in Graphic Design, a cadaver lab in Science, a photography studio for Mass Communications, Oklahoma's only accredited Lab School for Education, a full Pastoral Ministry program, an Equestrian Center, and more. With a 13:1 student:faculty ratio, professors will know your name, walking beside you through your academic journey. We don't mess



around when it comes to giving you our best.

Students from every discipline, every interest, are exposed to leadership opportunities where they can thrive.

First-generation college students who don't quite know the ropes have access to student services including tutoring and a writing center. We're with you every step of the way. Through more than 40 majors, you're able to see what it's like to have true integration of faith and learning, bringing the mind of Christ into every profession.

Explore SNU.

We're purposefully different.



SNU
1899
**PURPOSEFULLY
DIFFERENT**



Lindenwood University

Lindenwood University is in St. Charles, Missouri, about 30 minutes outside of St. Louis. Our students receive real experiences inside and outside the classroom that set them up for success after college. We are a private institution firmly rooted in Judeo-Christian values. These values consist of a belief in an ordered, purposeful universe, integrity, and dedication of our faculty to student success, and building a strong community that supports, encourages, and empowers the student body to attain their goals in life.

Our undergraduate population consists of a diverse group of around 4,000 students with representation from all 50 states and 70+ countries. These students can

select from more than 90 academic degrees on campus ranging from Business, Education and Humanities to Game Design, Fashion, or Athletic Training (and many more)!

We focus heavily on building a tight-knit community among our student body through leadership, professional development, student involvement, and NCAA D I athletics. There are over 50 different student organizations across campus that include campus ministries, sports (collegiate and intramural), Greek life, student government, and the opportunity to start your own club!

Call us today to schedule a campus visit and see if Lindenwood could be the right fit for YOU!



> WELCOME

HOME

A tight knit community next door to the opportunities the big city offers. Begin collecting **EXPERIENCES** that will help lead to your **SUCCESS** at Lindenwood University. Visit campus to learn how to be a part of something bigger.

> SCHEDULE A VISIT

lindenwood.edu
636.949.4949

LINDENWOOD

UNIVERSITY

REAL EXPERIENCE.
REAL SUCCESS.

University of Northwestern - St Paul

University of Northwestern – St Paul (UNW) is a Christian university with 107 acres on the shores of beautiful Lake Johanna in the heart of St. Paul, Minnesota. Students have come to Northwestern since 1902 to learn and develop as leaders through academically excellent, Christian education.

Academics

UNW offers over 75 areas of study including certificates, associates, bachelors, and masters degrees. UNW also has one of the highest numbers of Dual Enrollment (often called PSEO or Early College) students in Minnesota.

With accredited nursing and engineering programs, 15:1 student-to-faculty ratio, and integration of biblical principles into every class, you can be confident you are receiving an exceptional education.

Athletics

UNW boasts a competitive and Christ-focused athletics program with the tagline “Compete with Purpose” as its foundation. The Northwestern Eagles are part of NCAA-Division III, and offers students a total of 20 varsity sports throughout the year.



With 191 All-Americans, 10 National Championships, 100 National Tournament Appearances, and 201 Regular Season and Tournament Championships UNW athletes are recognized for their high standards on and off the field.

Arts and Extras

UNW also offers students opportunities to participate in rich music and theatre programs. Students can choose from many ensembles, bands, orchestras, and choirs, or get involved with theatre productions either on or behind the stage!

There are 6 Student Organizations, over 25 clubs, and plenty of intramurals and events

for you to find your people.

Radio Ministry

Northwestern's second president, Rev. Billy Graham, launched KTIS radio station with the goal of reaching people across the country with the gospel. Today Northwestern Media is KTIS and Faith Radio Network, and plays on 27 frequencies over 14 cities in 10 different states.

We'd love to meet you and show you around. While we're one of the most beautiful college campuses in the Midwest, it's the people who set this place apart. You can check out our campus, classes, and community with a personal or group visit.

Learn more at unwsp.edu today!

HESSTON COLLEGE
START HERE, GO EVERYWHERE

WE BELIEVE *in you!*

Start your journey with a bachelor's degree in
**Aviation, Business Management,
Engineering or Nursing.**

Apply today!

hesston.edu/apply

Inspire

Passion

Create

**UNIVERSITY OF THE
OZARKS**

University of the Ozarks

University of the Ozarks is a fully accredited, four-year, private Christian university located in the heart of the picturesque Ozark Mountains. The University has been consistently recognized by U.S. News & World Report as one of the top colleges in the 16-state South Region. As the oldest University in Arkansas, U of O has a resolute and courageous history as a trailblazer in higher education. It was the first college in Arkansas to admit women (1875), the first historically white college in the state to graduate an African American (1959) and to integrate athletics (1963), and the first in the nation to establish a comprehensive program for students with learning disabilities (1971). Today, Ozarks offers more than 60 aca-

demic programs through its unique LENS program, which allows students to explore various disciplines and customize their curriculum. There are also more than 30 clubs and organizations, including various denominational-affiliated groups and the dynamic Ozarks Outdoors program, which leads students on a myriad of outdoor recreational trips. With students from more than 20 countries and 25 states, Ozarks is one of the most diverse small colleges in the country. Students also find success following graduation as evidenced by a job and graduate school placement success rate of 95 percent over the past six years. For more information visit ozarks.edu.





**DON'T JUST GET A DEGREE.
FIND YOUR MISSION.**



VISIT CAMPUS!

Scan the QR code or
go to unwsp.edu/visit

University of Northwestern (UNW) is a Christian university located in the heart of the Twin Cities of Minneapolis and St. Paul, Minnesota. Since 1902, students have come to Northwestern to learn and develop as leaders through academically excellent, Christian education.



**UNIVERSITY of
NORTHWESTERN**
ST. PAUL



hlg&u

Education is an investment.

The time and money spent on your foundation of knowledge is crucial to your future. At HLGU, we aim to equip & empower our students for success in their career. An education anchored in a Biblical worldview facilitated through our talented professors will transform you to create an impact for generations.

Apply today to prepare for your future!

HLGU
Hannibal-LaGrange University
www.hlg.edu

Hannibal-LaGrange University

Unapologetically Christian

Hannibal-LaGrange University transforms lives and communities through relevant education anchored in a Biblical worldview. With the motto "Knowledge for Service," HLGU prides itself in its traditional and nontraditional educational experience in a distinctively Christian environment.

Fully Accredited

This historic institution is a four-year university, fully accredited by the Higher Learning Commission of the North Central Association of Colleges and Schools. With 36 majors offered, there are many different paths to choose from to prepare for your future whether you prefer in-seat or online classes. The campus unfolds on 110 acres of scenic hills and woods above the Mississippi River, HLGU's campus provides spacious facilities for its diverse student body to enhance your collegiate career.

Hannibal-LaGrange University is a member of the National Association of Intercollegiate Athletics and offers many opportunities to compete for both men



and women. Through the student life activities, there are over 35+ clubs and organizations for you to get involved. Your college memories are waiting to happen here at HLGU.

Schedule your visit today

Tour the campus, meet the professors, and spend some time with HLGU students. Come get to know HLGU through an on-campus Trojan day. Visit our website at to register or call 573.629.3264 for a private tour.

\$80,000 Full Tuition Scholarship (over 4 years) when you live in the dorm



BARCLAY BEARS

DEGREES

- Bible & Theology
- Business Administration
- Elementary Education
- Intercultural Studies
- Nursing
- Pastoral Ministry
- Psychology & Family Studies
- Sports Management
- Worship Arts
- Youth Ministry

EXTRA CURRICULARS

- Choir and BC Singers
- Worship Teams
- Drama/Theater Productions
- Student Government
- Intramural Sports
- Juniors Global

SPORTS

- Soccer
- Volleyball
- Men's Basketball
- Women's Basketball
- Cross Country

NEW Bachelor of Science in Nursing (BSN)

BARCLAY COLLEGE

PREPARING STUDENTS IN A BIBLE-CENTERED ENVIRONMENT
for effective Christian Life, Service, and Leadership.

admissions@barclaycollege.edu Haviland, Kansas 800-862-0226 barclaycollege.edu

Barclay College

If a Christian education is important to you, why not consider a college that prepares you for "effective Christian Life, Service and Leadership" at a fraction of the cost of other private institutions? Barclay College proudly offers a *Full Tuition Scholarship* to ALL students that choose to live in the dorms. This 4-year, \$76,000 scholarship allows you to receive a solid Biblical education and graduate with little to no debt.

Located in Haviland, KS, Barclay College offers bachelor's degrees in the following: Nursing, Youth Ministry, Psychology and Family Studies, Pastoral Ministry, Worship Arts, Business Administration, Elementary Education K-6, Intercultural Studies, Bible/Theology and Sports Management.

College isn't just about the education you get in the classroom. Campus involvement is just as important as your GPA when it's time to take the next step after college.

At Barclay College, you will find several opportunities to be a part of various groups on campus. Our hope is that you will be intentional about experiencing life together, building relationships, and strengthening your walk with



Christ. Check out the activities and groups where you can grow spiritually, develop long-lasting friendships, and have fun together.

Our extracurricular activities include: Intramural Sports, Chapel Teams, Theatre, Choir, Student Government and Small Groups

Affiliated with the National Christian College Athletic Association (NCCAA) as well as the Midwest Christian College Conference (MCCC), Barclay College is proud to offer the following athletic opportunities: Soccer, Volleyball, Men's & Women's Basketball, Cross Country

Apply for FREE at barclaycollege.edu and contact us at 800-862-0226 or admissions@barclaycollege.edu with any questions.

Ozark Christian College



For over 80 years, Ozark Christian College in Joplin, Missouri, has held fast to one mission: we train men and women for Christian service. Today, Ozark's 15,000 alumni have served in all 50 states and in over 100 countries around the world. OCC stands as one of the largest undergraduate Bible colleges in the country, and our Master of Arts in Biblical Ministry prepares leaders at the graduate level.

Ozark is accredited by the Association for Biblical Higher Education and the Higher Learning Commission. Our outstanding biblical training, transformative community, and kingdom service opportunities equip students for all kinds of ministry in missions, music, student and children's ministry, preaching, pas-

toral counseling, organizational leadership, and more. Outside the classroom, Ozark's athletics programs have received many honors, including five national championships. A member of the National Christian College Association of Athletics, OCC offers competitive basketball, cross country, women's volleyball, and men's soccer. Students also participate in intramural sports, drama, performance groups, and other activities that build community and further prepare them for Christian service. Many people want to serve God and make a difference with their lives, but they aren't sure where to start. At Ozark Christian College, we provide the training you'll need for the kingdom assignment God has for you. occ.edu

OZARK
CHRISTIAN COLLEGE

Biblical Foundation
Transformative Community
Kingdom Service

Your mission is out there.
Training starts here.

RESIDENTIAL. ONLINE. GRADUATE. **OCC.EDU**

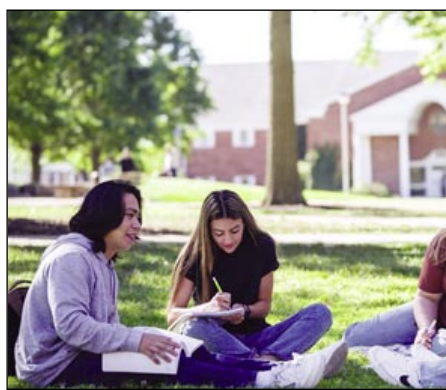
MidAmerica Nazarene University

Discover Your Passions And Find Your Calling at MNU

At MNU, you'll discover your passions and find your calling while learning from professors who know your name. MNU is a welcoming Christian learning community for students from right here in the Midwest and around the world.

Our more than 70 areas of study in undergraduate, graduate and certificate programs are known for quality and a personal, student-focused approach. As an undergraduate, you can major in popular programs like business, education, nursing, ministry and kinesiology. Our preprofessional partnerships include counseling, dentistry, engineering, law, medicine, physical therapy, occupational therapy, pharmacy and more.

We also offer graduate degrees in business, education, nursing, counseling, and postgraduate certificates. Online programs include classes in education, nursing, business and associate's level studies.



You can study abroad as well as participate in service-learning trips and experiences through Pioneer Trek.

We offer chapel services and many other options for spiritual enrichment. After all, our mission is to nurture a Christlike community, pursue academic excellence, and cultivate a passion to serve. We're here to help you discover what that means for your life.

Visit our beautiful 105-acre campus in Olathe, Kansas, soon and see all that MNU has waiting for you. We really want you at MNU! Learn more at mnu.edu/plan-a-visit

MNU KC'S PREMIER CHRISTIAN UNIVERSITY

MNU WANTS YOU!

DISCOVER A WIDE VARIETY OF MAJORS AND PRE-PROFESSIONAL PROGRAMS TO MEET YOU WHERE YOU ARE.

MIDAMERICA NAZARENE UNIVERSITY
2030 E. College Way, Olathe KS, 66062 | mnu.edu

Adam T. Hooker
Director of Regional Recruitment
913.971.3789
athooker@mnu.edu

EMMAUS BIBLE COLLEGE

Check out our academic program options:
emmaus.edu/programs

Calculate your scholarship today:
emmaus.edu/scholarships



*Christ-Centered Education
Uncompromised Biblical Teaching
Valuable Professional Degrees*

Emmaus Bible College

More than 80 years ago, Emmaus Bible College was founded to train students to study the Bible without compromise and send them out to impact the world for Christ. Today, the scope of what we offer has expanded, but our purpose has not changed.

Christ-Centered Education

We aspire for our campus community to reflect the Lord Jesus Christ in everything we do – our athletics, dorm life, the entire social and educational environment. We are a vibrant college campus that seeks to honor Christ in all we do.

Uncompromised Biblical Teaching

Keeping true to our foundation, qualified and trusted faculty faithfully expound the Word of God, teaching from the entire scope of scripture. At Emmaus Bible College, inerrancy of scripture means exactly what it sounds like. There has been a cultural tendency by some to redefine what inerran-

cy means but not at Emmaus Bible College. Our programs encompass the biblical and theological truths that are time-tested and represent the whole truth.

Valuable Professional Degrees

Bible is at the core of what we teach. In addition, our goal is to prepare our graduates to serve in the context of everyday workplaces. To do this, we offer bachelor degrees in high-demand areas such as Business Administration, Counseling, Cybersecurity, Nursing, Teacher Education, and many more.

To learn more, visit www.emmaus.edu



GRAND CANYON UNIVERSITY[®]

FIND YOUR PURPOSE

Private. Christian. Affordable.



GENEROUS SCHOLARSHIPS

In 2022, GCU's traditional campus students received nearly \$180 million in scholarships. Visit gcu.edu/myoffer to find out what you qualify for.



GRADUATE WITH LESS DEBT

GCU bachelor students graduate with less debt than students at public and other private non-profit four-year universities, paying an average of \$8,900 for tuition as of the 2020-21 academic year.^{1,2}



#17 BEST COLLEGE CAMPUS IN AMERICA FOR 2023

Rated by Niche.com

NO APPLICATION FEE!

855-428-7884 | gcu.edu/ApplyNow

¹ 2019-20. Average GCU student loan debt is calculated by taking only undergraduate students with student loan debt (borrowed by graduates) who have graduated in the 2019-20 Award Year into consideration.

² 2019-20. Data retrieved from College Board, Trends in College Pricing and Student Aid 2021 in February 2022.

Grand Canyon University is accredited by the Higher Learning Commission (hlcommission.org), an institutional accreditation agency recognized by the U.S. Department of Education. Please note, not all GCU programs are available in all states and in all learning modalities. Program availability is contingent on student enrollment. Pre-licensure nursing students who begin or resume attendance in Fall 2020 and beyond will be ineligible to utilize most GCU institutional aid/scholarships for tuition and fees once accepted into the clinical portion of the program. Important policy information is available in the University Policy Handbook at gcu.edu/academics/academic-policies.php. The information printed in this material is accurate as of FEBRUARY 2023. For the most up-to-date information about admission requirements, tuition, scholarships and more, visit gcu.edu. Approved by the Vice Provost on Feb. 8, 2023. ©2023 Grand Canyon University 23GTR0036

Grand Canyon University

Grand Canyon University is Arizona's premiere, private Christian university. We help students find their purpose by offering more than 300 academic programs across nine distinct colleges. Over 25,300 students learn on our approximately 275-acre campus in the heart of Phoenix, which continues to grow with residence halls, popular eateries, student support resources and athletic facilities such as the GCU Arena and Canyon Activity Center.

GCU also offers generous scholarship opportunities to make a private education affordable.

Take a tour of our campus by signing up for Discover GCU, our overnight, all-expenses-paid¹ trip to sunny Arizona, where you'll experience life as a Lope firsthand.

For more information, check out gcu.edu/admissions.

¹ Travel reimbursement is only available to accepted prospective traditional campus students, plus one legal guardian, from a student's home city/state to Phoenix, AZ. School/district/organizations staff, faculty and/or personnel are



also eligible. To participate, the program requires a signed MOU by both the student and parent/guardian or personnel, approval of travel dates by GCU and receipts submitted per GCU requirements. Travel reimbursement thresholds vary based on location and education sector. Only one form of travel will be reimbursed, air OR ground. GCU does not reimburse hotel expenses, baggage costs, early check-in or travel insurance fees. Travel reimbursement usually occurs within 45 days.

Grand Canyon University is accredited by the Higher Learning Commission (hlcommission.org), an institutional accreditation agency recognized by the U.S. Department of Education. Approved by the Vice Provost on Feb. 3, 2023.

©2023 Grand Canyon University
23GTR0056

Oral Roberts University



What is the ORU experience?

It's a Spirit-empowered, globally engaged, bold vision-embracing pursuit of excellence that will equip you to go into the world and make an impact for Christ. In short, the ORU experience is LIFE. CHANGING.

Academics

For almost 60 years, our award-winning faculty has championed our students in their intellectual pursuits by taking them beyond the textbook for truly experiential learning.

With 150+ academic offerings at the bachelor's, master's, and doctoral levels, you're sure to find

something that fits your interests and abilities

Finances

A college education isn't just about a diploma... it's about an investment in your future. Things like our Quest Whole Leader and Quest First scholarships, customizable payment plans, participation in financial aid, and LEAP (ORU's loan buyback program), help ensure that your education's value is much greater than the cost.

Spiritual Life

What sets us apart? It's simple. We are built on and dedicated to the Holy Spirit and have an unwavering dedication to spiritual integrity.

Immerse yourself in a community with student-led worship and prayer movements, local and global mission trips, and twice-weekly chapel services.

Campus Life

We are more than 5,000 students strong, with all 50 states and 145+ nations represented. Diversity? We've got that. We've also got 16 NCAA Division I athletic teams, more than 30 student-led clubs and organizations, and a multitude of leadership opportunities. An amazing campus community is kind of our thing.



BELONG AND BECOME
Find out where a Tabor College education can take you.



Tabor College
Decidedly Christian
Academically Excellent

 /TaborCollege
 @TaborCollege
 /taborcollege
tabor.edu
admissions@tabor.edu
(620) 947-3121
 "Discover Tabor" app



ORAL ROBERTS UNIVERSITY
EXPERIENCE IT
VISIT APPLY.ROU.EDU TODAY!

HARDING UNIVERSITY



-  110+ Undergraduate Majors
-  14 Preprofessional Programs
-  40+ Graduate and Professional Programs

-  6 Study Abroad Programs
-  NCAA Division II Sports
-  Christ-Centered Education



pursue your meaning & purpose **harding.edu**

Harding University



Harding University is ranked #1 in Best Christian Colleges & Universities for 2022 with a perfect 100.0 score based on average net price, retention rate, graduation rate, and salary after attending.

Located in Searcy, Arkansas, Harding University is committed to helping students reach their fullest academic potential while learning more about God and strengthening their faith. With nearly 5,000 students from across the United States and more than 50 nations and territories, Harding University is a private Christian institution, nurturing faith, strong ethical standards and lifelong connections. The University provides local, national and international mission opportunities to share the

love of Christ. Academically, Harding offers more than 100 areas of study, including new majors in construction science, community engagement and cybersecurity. There is also a robust Honors College and a dual-enrollment curriculum where students can take up to four online classes for free.

Harding University was named a 2021-22 Christian College of Distinction as well as the No. 1 2021 Best Value College in Arkansas by SmartAsset. Whoever you are, wherever you're from, you can pursue your meaning and purpose here. Come visit our campus and see why Harding was voted "The Most Homeschool-Friendly College in Arkansas" by Alpha Omega.

SINCE 1970,

the heart of Christ For The Nations Institute has been to train and equip individuals for the cause of Jesus in their lives. At Christ For The Nations Institute, we believe that a Christian must possess a foundation cemented in Scriptural truths, a personal mission to see the lost saved and empowered, as well as a desire to worship God in all areas of life.

Our three-year program consists of Spirit-filled chapels, classes that dive deeper into the Word, and community that is running after Jesus. Through our three-year program, you will be challenged to grow in your relationship with Jesus and will see Him in a new way.

Whether you are called to lead God's people into worship, serve on the mission field, impact the marketplace, or be a stay-at-home parent, **CFNI provides practical training that will remain with you for the duration of your life and ministry.**

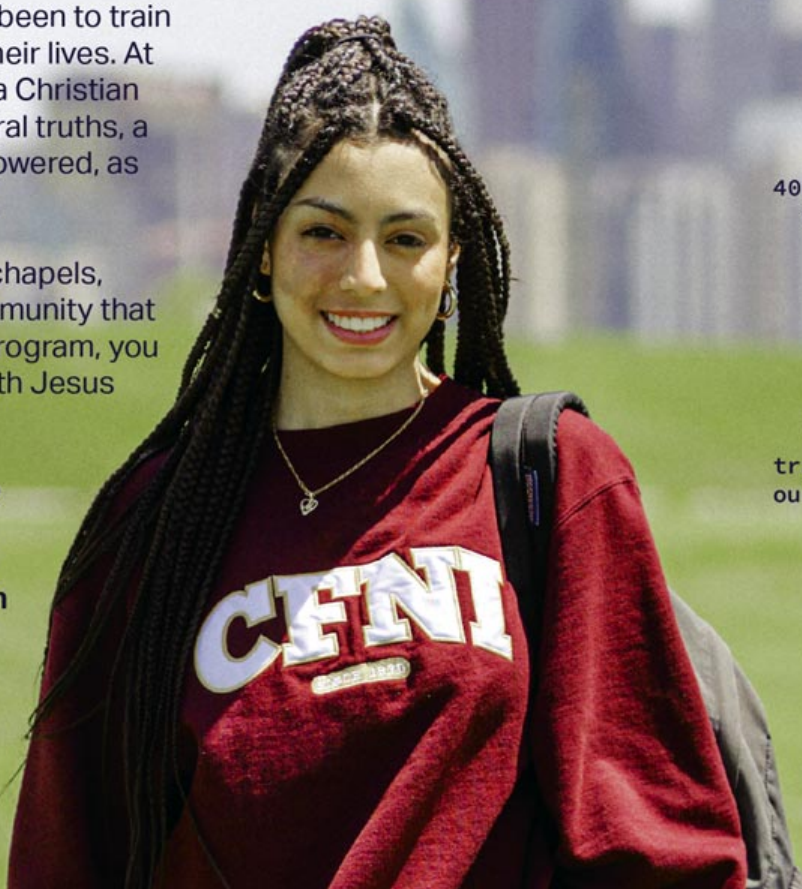


WANT MORE
INFORMATION?
SCAN HERE!


40,000+ world changers
trained since 1970


Hands-on ministry
training experience in
our third year program


Co-enrollment
opportunities
with DBU & GCU





MANHATTAN CHRISTIAN COLLEGE

On Campus • Online

Our mission is to educate, equip, & enrich Christian leaders so that every student and graduate would be prepared & motivated to impact the world with the gospel of Jesus Christ regardless of their chosen profession.



Manhattan Christian College



As a private Christian college across the street from Kansas State University, Manhattan Christian College is a unique training ground for young leaders. Imagine being seen and known on a personal level while also having access to the opportunities and amenities of a Division I University.

You can tailor your coursework to dive deep into your major, while also earning general education credits with a core Bible and theology foundation. Accredited by the Higher Learning Commission and the Association of Biblical Higher Education, you can transfer in earned credits or work concurrently on credits in the Dual Degree Program with K-State.

Opportunities abound to grow

spiritually and intellectually from the smaller classroom settings to chapel, in residence halls, through local church involvement, and more.

MCC is a close-knit community of believers. Life-long friendships, that support you throughout a life of service, are forged in every facet of campus life. Faculty and staff help you pursue your calling and mature spiritually.

When you graduate and it's time to apply for a job or graduate school, being seen and known means you'll get great advice on where to go, what to do, and personal reference letters to land that job or get into your top choice graduate program yourself. Visit our campus to experience this for yourself!

PREPARING YOU TO CHANGE THE WORLD.

Kansas Christian College exists to develop servant leaders who know God, who have a passion for holiness of heart, and who are inspired and prepared for a lifetime of learning and Kingdom service.



KANSAS CHRISTIAN COLLEGE
Est. 1938



84+
Years Since KCC
Founded



12
Average Class Size



10:1
Student / Teacher Ratio



92%
Students Receive
Financial Aid



TRADITIONAL & ONLINE

APPLY TODAY

WWW.KANSASCHRISTIAN.EDU
(913) 722-0272
7401 METCALF AVE. OVERLAND PARK, KS 66204

CHRIST-CENTERED
STUDENT-DRIVEN



Kansas Christian College

Formerly known as Kansas City College and Bible School, KCC has been training men and women for service in the Kingdom of God since 1938.

By offering a variety of ministry-related degrees in religion, business, education, psychology, music, worship and general studies, along with a full array of varsity athletics we fulfill our mission "to develop servant leaders who know God, who have a passion for holiness of heart, and who are

inspired and prepared for a lifetime of learning and kingdom service."

Our Vision

To see thousands of students change the world for Christ.

Our Mission

Kansas Christian College exists to develop servant leaders who know God, who have a passion for holiness of heart, and who are inspired and prepared for a lifetime of learning and Kingdom service.





GROUNDED IN THE TRUTH. READY FOR THE WORLD.

SPURGEON COLLEGE IS FOR THE KINGDOM.

SPURGEON COLLEGE IS DEDICATED TO TRAINING THE LEADERS OF TODAY AND TOMORROW.

Our degree options ground students in the truth while getting them ready for the marketplace. So whether you're joining us for residential studies in Kansas City or taking your courses via our online Global Campus, Spurgeon College is the sensible option to prepare and equip you for leadership today and tomorrow.

Take the next step.

spurgeoncollege.com



BIBLICAL

Education grounded in God's infallible Word.

AFFORDABLE

Competitive annual tuition rate.

FLEXIBLE

Choose from several residential & online options.

Midwestern Seminary and Spurgeon College



Spurgeon College exists to train and equip students to be Christian leaders for the Kingdom of God. Our students serve in churches, schools, and businesses across the United States and around the world. Our unique environment fosters spiritual, personal, and academic growth as students deepen their understanding of the Word of God and the world He created.

Spurgeon College provides a rigorous academic environment

designed to prepare students to engage a rapidly changing global environment. Available online and on campus, our academic programming connects students to the practical realities of ministry-track careers with the end goal of preparing men and women for kingdom service always in view. We intentionally create spaces for you to develop Christ-centered relationships that last a lifetime. From impromptu games of 3-on-3

basketball and conversations over coffee in the Mathena Student Center to our world-class For The Church Conference, students join together to help each other mature in their faith and reach the broader Kansas City metro for Christ.

At Spurgeon College, we provide the context for you to grow into the person God has called you to be. Are you ready to take the next step?

FROM ORDINARY TO EXTRA ORDINARY



**CENTRAL
CHRISTIAN**
COLLEGE OF THE BIBLE

How will you be transformed?
[CCCB.EDU/AuthenticU](https://cccb.edu/AuthenticU)

SCHOLARSHIPS AVAILABLE | APPLY TODAY

Milligan University



Grounded in a tradition of scholarship, community, and faith, Milligan University has been dedicated to educating men and women to lead and to serve for over 150 years.

Milligan offers more than 100 majors and minors, along with graduate programs, to prepare students for careers in business, engineering, education, nursing, ministry, occupational therapy, physician assistant studies, and more. A premier Christian liberal arts university, Milligan consistently ranks among the top regional universities in the South by U.S. News & World Report and the second best in value.

Our esteemed professors are among the best in their fields, and they also value exceptional teaching, discovery, and experiential learning. To prepare servant-leaders,

our faculty design class projects and research to change lives around the world. Engineering students construct water purification systems for rural communities in Tennessee and Kenya. Chemistry and biology students research improvements for antibiotics for cystic fibrosis patients. The Ministry Leadership Program allows ministry students to learn from transformative church leaders from around the country and visit innovative ministries.

Located in Johnson City, Tennessee, Milligan's picturesque campus is minutes from the Appalachian Mountains and a thriving downtown. Our 1,100 students represent 40 states and 27 countries. With plenty of opportunities to get involved on campus, there is a place for everyone to discover their purpose.

**PREPARE
TO
LEAD
&
SERVE.**

**MILLIGAN
UNIVERSITY**
milligan.edu | Johnson City, TN

**A TOP UNIVERSITY AND
BEST VALUE IN THE SOUTH**
—U.S. News



Prepare for it at Evangel University.

Schedule a campus visit and:

- Tour our beautiful campus
- Meet faculty and staff
- Check out a class in your anticipated major
- Attend a chapel service
- Spend the night in a residence hall
- Take a selfie with our president!

evangel.edu/visit
800.EVANGEL



EVANGEL
UNIVERSITY

Teaching a New Generation About the Holocaust



Vision Israel is an educational nonprofit started by Dwight and Anita Widaman. Through a partnership with Yad Vashem, the World Holocaust Memorial in Israel, we bring to your school or organization a museum-quality exhibit that is one of the most powerful events you can host.



visionisrael
see beyond

Now scheduling
showings for
2023 and 2024.

Contact Anita Widaman
816-524-4522 VisionIsrael.org



YOU WANT TO MAKE A DIFFERENCE IN THE WORLD.
We want to help.

27 PROFESSIONAL AND MINISTERIAL DEGREES

CHRIST-CENTERED CURRICULUM WITH A BIBLICAL WORLDVIEW

ONE OF THE MOST AFFORDABLE PRIVATE COLLEGES IN MISSOURI

FULLY ACCREDITED BY HLC & ABHE

11:1 STUDENT TO FACULTY RATIO

FAMILY-LIKE ATMOSPHERE & A SENSE OF COMMUNITY

NCCAA DIVISION 1 SPORTS
MEN'S BASKETBALL
WOMEN'S BASKETBALL
BASEBALL - SOFTBALL
VOLLEYBALL - MEN'S
SOCCER - WOMEN'S
SOCCER - MEN'S GOLF -
WOMEN'S GOLF

APPLY TODAY!

GOBBC.EDU



BAPTIST BIBLE COLLEGE

TRAINING EFFECTIVE CHRISTIAN LEADERS SINCE 1950

Baptist Bible College

Baptist Bible College, founded in 1950, is a private, four-year Christian college specializing in fully accredited ministry and professional studies degrees.

Located in Springfield, Mo., BBC is seeing a strong resurgence with annual growth. This is due in large part to our first-class educational opportunities coupled with a small, family-like atmosphere where students receive personalized attention while building community through engaging student life activities.

BBC has a long heritage of producing Christian professionals and ministers by offering accredited associates, bachelors, and masters degrees in programs such as Pastoral Studies, Church Ministry, Missions/Intercultural Studies, Biblical Counseling, Organizational Leadership, Business, Education, Nursing, and more.

We are pleased to provide robust theology, sound Biblical studies, and practical skills with strategic relevance, all within the scope of a Christian worldview.

In addition to on-campus degrees, BBC also has first-class online programs for both undergraduate and graduate degrees. Graduates enter their chosen



careers fully prepared both spiritually and academically to be leaders in their fields. We offer affordable block tuition, which allows students to take 12-18 credit hours per semester for one affordable price. Every student can qualify for institutional aid and eligible students can receive federal funding.

At BBC, we are the Patriots and our athletics are nationally recognized. Sports include men's and women's basketball, men's and women's soccer, men's and women's golf, baseball, softball, and volleyball. Our programs compete in Division I of the National Christian College Athletic Association (NCCAA D1).

With strong leadership and dedicated, loving faculty and staff behind them, graduates leave our halls prepared to take their faith wherever God sends them.

COLLEGE DIRECTORY

BAPTIST BIBLE COLLEGE

628 E. Kearney Street
Springfield, MO 65803
417-268-6000
E-MAIL: admissions@gobbbc.edu
WEBSITE: gobbbc.edu
ADMISSIONS CONTACT: Brad Cooksey
NUMBER OF STUDENTS: 286
RELIGIOUS AFFILIATION: Baptist
ESTABLISHED: 1950
ACCREDITATION: Higher Learning Commission & Association for Biblical Higher Education
MAJORS AND DEGREES: SEATED: AA Business Management; BS Biblical Counseling; BS Business Management; BS Business Management w/ AS Nursing; BS Church Min.: Family Concentration; BS Church Min.: Worship Concentration; BS Early Childhood Ed.; BS Elementary Ed.; BS Middle Sch. Ed. - Social Science; BS Secondary Ed. - Business; BS Secondary Ed. - Social Science; BA or BS Missions / Intercultural Studies; BA or BS Pastoral Studies.
ONLINE: AA Biblical Studies; AA Business Administration; AA Christian Leadership; BS Biblical Studies; BS Business Administration; BS Christian Leadership; MA Biblical Counseling; MA Church Min.; MA Organizational Leadership; MDivinity.
STRENGTHS OF COLLEGE: 11:1 student to faculty ratio; Business & Education students earn double major (Biblical Studies); Block tuition allows for up to 18 credit hours at no additional cost; Nationally recognized athletic programs; Scholarships & federal funding opportunities.
SPECIAL PROGRAMS:
TUITION: \$15,130.00
FINANCIAL AID: Institutional scholarships available, students are eligible for federal aid as qualified.

BARCLAY COLLEGE

607 N Kingman
Haviland, KS 67059
800-862-0226
E-MAIL: admissions@barclaycollege.edu
WEBSITE: <https://www.barclaycollege.edu/>
ADMISSIONS CONTACT: Justin Kendall/admissions@barclaycollege.edu
NUMBER OF STUDENTS: 125
RELIGIOUS AFFILIATION: Evangelical Friends (Quaker)
ESTABLISHED: 1917
ACCREDITATION: ABHE, HLC
MAJORS AND DEGREES: Bachelor's degrees in Bible and Theology, Business Administration, Elementary Education K-6, Intercultural Studies, Nursing, Pastoral Ministry, Psychology and Family Studies, Sports Management, Worship Arts, and Youth Ministry. All students receive a dual degree Biblical Studies.
STRENGTHS OF COLLEGE: Barclay College provides an affordable, high-quality education, genuine interaction with peers and professors, and a low student-to-teacher ratio. Students experience a strong sense of community and are able to grow in their faith.
SPECIAL PROGRAMS: Fine Arts: Barclay College's fine arts department is regionally acclaimed. Each year, a musical and play production are presented in the new, state-of-the-art Ross-Ellis Center for Arts & Ministry to sold-out audiences. Past shows include "Beauty and the Beast," "Newsies," and "Mary Poppins." A minor is offered in Theater. Barclay College offers a RN to

BSN online nursing degree completion program and will soon begin offering a traditional Bachelor of Science in Nursing (BSN) program. Applications to the traditional BSN program are currently being accepted for Fall 2024. We encourage general applications immediately for pre-nursing students who have the goal of entering the traditional BSN program in the future.
TUITION: Full Tuition Scholarship for all students who live in the dorms with a total overall estimated expense of \$16,990 per year for full-time, on-campus students.
FINANCIAL AID: Scholarships, grants, and loans are available and can be applied toward fees, room and board.

CALVARY UNIVERSITY

15800 Calvary Rd
Kansas City, MO 64147
816-322-3960
E-MAIL: admissions@calvary.edu
WEBSITE: www.calvary.edu
NUMBER OF STUDENTS: 300
RELIGIOUS AFFILIATION: Non-denominational
ESTABLISHED: 1932
ACCREDITATION: Higher Learning Commission and Association for Biblical Higher Education
MAJORS AND DEGREES: Bible & Theology, Business Administration, Biblical Counseling, Education, Ministry Studies, Music, and many more
STRENGTHS OF COLLEGE: Calvary University is standing firm on its Biblical foundation. We provide high quality education at a low cost. Students receive an excellent and marketable education while experiencing a community focused on discipleship
SPECIAL PROGRAMS: 5 Year Bachelor's in Bible & Theology to Master's of Divinity; Ph.D. in Bible & Theology
TUITION: 14,300 tuition and aid annually based on 15 credit hours per semester
FINANCIAL AID: Federal financial aid as well as several internal scholarships and discounts

CENTRAL CHRISTIAN COLLEGE OF KANSAS

1200 S. Main St.
McPherson, KS 67460
620-241-0723 ext. 388
E-MAIL: admissions@centralchristian.edu
WEBSITE: www.centralchristian.edu
ADMISSIONS CONTACT: Alex Wuest, Director of Enrollment
NUMBER OF STUDENTS: 350 on-campus
RELIGIOUS AFFILIATION: Free Methodist
ESTABLISHED: 1884
ACCREDITATION: Higher Learning Commission
MAJORS AND DEGREES: Associates and Bachelor's degrees in more than 40 different programs including Aviation, Business, Communications, Education, English, Fine Arts, Liberal Studies, Ministry, Theology, Psychology, Science, Math, Social Sciences, Sports, Science, Health
STRENGTHS OF COLLEGE: Christian atmosphere, small-class sizes, personal education, outreach and missions minded, Biblical worldview in every class, spiritually-emphasized campus life, competitive sports, Contemporary Music program, Worship Arts programs, beautiful campus, facilities in safe and quiet community, and leadership

development opportunities.
SPECIAL PROGRAMS: We offer both on-line and on-ground options for our Masters of Strategic Leadership provides many job opportunities upon graduation.
TUITION: Tuition and Fees \$30,400
FINANCIAL AID: 98% of students receive scholarships. The average scholarship per student is \$15,396, that's an average total of \$61,584 over four years!

CENTRAL CHRISTIAN COLLEGE OF THE BIBLE

911 E Urbandale Dr.
Moberly, MO 65270
660-263-3900
E-MAIL: admissions@ccc.edu
WEBSITE: www.cccb.edu
ADMISSIONS CONTACT: Jeremiah Ratliff (jeremiahratliff@ccc.edu)
NUMBER OF STUDENTS: 150
RELIGIOUS AFFILIATION: Restoration Movement (Christian Church/Church of Christ)
ESTABLISHED: 1957
ACCREDITATION: Association of Biblical Higher Education (ABHE)
MAJORS AND DEGREES: Accounting, Addictions Counseling, Advanced Manufacturing Technology, Aviation Management, Behavioral Health Support, Biblical Ministry, Biblical Studies, Biology, Business Administration (Accounting), Business Administration, Business Administration (Business Management), Business Administration (Human Resource Management), Business Information Systems, Business Office Administration, Christian Counseling, Christian Education, Christian Ministries, Christian Leadership, Communication, Creative Digital Media, Criminal Justice, Cross Cultural Ministry, Cybersecurity (Cyber Analyst), Early Childhood Education, Fine Arts, Health Science (General), Health Science (Pre-ADN), Health Science (Pre-Accelerated ADN), Health Science (Pre-Behavioral Health Support), Health Science (Pre-Clinical), Health Science (Pre-MLT), Health Science (Pre-OTA), Health Science (Pre-Surgical Technology), Health Science (Pre-Veterinary Technology), Healthcare Administration, Human Services, Information Technology, Integrative Studies, Marketing, Management, Medical Laboratory Technician (MLT), Nursing (Associate), Occupational Therapy Assistant (OTA), Organizational Leadership, Practical Nursing, Preaching, Professional Studies, Psychology of Human Relations, Religious Studies
Social/Behavioral Science, STEM, Youth and Family Ministry,
STRENGTHS OF COLLEGE: Safety. Affordability. Christian Foundation in every degree program.
SPECIAL PROGRAMS: Partnerships with Indiana Wesleyan University and Moberly Area Community College
FINANCIAL AID: Full Tuition Scholarship (Competition) - All Tuition Covered for entire degree program
President's Scholarship - \$4,000/Year (Residential), \$2,000/Year (Online)
Dean's Scholarship - \$2,500/Year (Residential), \$1,250/Year (Online)
Central Grant (Based on Need)

CHRIST FOR THE NATIONS INSTITUTE

444 Fawn Ridge Dr.
Dallas, TX 75224
(214)302-6438
E-MAIL: admissions@cfni.org
WEBSITE: www.cfni.org
ADMISSIONS CONTACT: Ally Curtin - Recruitment Coordinator
NUMBER OF STUDENTS: 600
RELIGIOUS AFFILIATION: Christian: Non-Denominational
ESTABLISHED: 1970
ACCREDITATION: Non-Accredited
MAJORS AND DEGREES: Majors: Youth, Pastoral, Children & Family, and Worship; Degrees: Certificate of Biblical Studies, Associates of Practical Theology, Bachelors of Practical Ministry, Advanced Studies Diploma
STRENGTHS OF COLLEGE: To train & equip people for ministry
SPECIAL PROGRAMS: Youth Ministry, Pastoral Ministry, Children & Family Ministry, and Worship Ministry
TUITION: See at <https://cfni.org/tuition-fees/>
FINANCIAL AID: N/A

COLORADO CHRISTIAN UNIVERSITY

8787 W Alameda Ave
Lakewood, CO 80226
303-963-3000
EMAIL: annevins@ccu.edu
WEBSITE: ccu.edu
ADMISSIONS CONTACT: Andrew Nevins
NUMBER OF STUDENTS: 1,563 traditional undergrad
RELIGIOUS AFFILIATION: Interdenominational Christian
ESTABLISHED: 1914
ACCREDITATION: Higher Learning Commission (HLC)
MAJORS AND DEGREES: CCU's College of Undergraduate studies offers more than 100 program options including majors, minors, and emphases. In addition, you may choose from several Dual Degree programs which allow you to earn your bachelor's degree while simultaneously earning credit toward your CCU master's degree.
STRENGTHS OF COLLEGE: We are a university that seeks to provide Christ-centered higher education transforming students to impact the world with grace and truth. We are an academic community of committed Christian believers rooted in a profound respect for higher learning framed within the Christian worldview.
SPECIAL PROGRAMS: Nursing, Engineering, Strategic Communication, Outdoor Leadership
TUITION: 2023-24 Academic Year: \$38,516
FINANCIAL AID: Substantial scholarships available for academic achievement; Additional scholarships available for Music, Theatre, Debate, Athletics, etc.; Colorado Christian University also partners with dozens of high schools and a few select organizations to provide financial opportunities for prospective students associated with these organizations to pursue their education at CCU. Go to ccu.edu/finaid for more information.

DORDT UNIVERSITY

700 7th Street NE
Sioux Center, IA 51250
800-343-6738
E-MAIL: admissions@dordt.edu
WEBSITE: dordt.edu
ADMISSIONS CONTACT: Olive Vande Polder
NUMBER OF STUDENTS: 1,858
RELIGIOUS AFFILIATION: Christian
ESTABLISHED: 1955
ACCREDITATION: HLC
MAJORS AND DEGREES: Dordt offers 43 bachelor's degree programs, seven associate degree programs, and five master's degree programs. Dordt's largest majors include business, education, engineering, agriculture, nursing, health and human performance, biology, social work, psychology, and accounting.
STRENGTHS OF COLLEGE: Dordt is a Christian institution that incorporates faith into every area of college life. It has been nationally recognized as a place where faculty and staff are committed to teaching well. The Wall Street Journal ranked it the top school in the nation for six years in a row for student engagement. U.S. News and World Report ranked it tied for fourth for "Best Undergraduate Teaching among Regional Universities (Midwest)."
SPECIAL PROGRAMS: Dordt offers two-year technical programs in agriculture and engineering technology. These programs also provide students the opportunity to segway into a four-year degree.
TUITION: \$35,960, food and housing \$11,430
FINANCIAL AID: The average financial aid award for freshmen is \$31,600

EMMAUS BIBLE COLLEGE

2570 Asbury Road
Dubuque, IA 52001
563-588-8000
E-MAIL: admissions@emmaus.edu
WEBSITE: www.emmaus.edu
ADMISSIONS CONTACT: Chris Herrin, cherrin@emmaus.edu
NUMBER OF STUDENTS: 230
RELIGIOUS AFFILIATION: Non-Denominational
ESTABLISHED: 1941
ACCREDITATION: Higher Learning Commission (HLC) & Association for Biblical Higher Education (ABHE), Approved by the State of Iowa Department of Education for Teacher Licensure, Approved by the Veterans Administration for education training, Member of the Evangelical Training Association (ETA) and authorized to award ETA Teaching Diploma, Member of the Association of Christian Schools International (ACSI) and teacher education graduates qualify for ACSI teacher certification.
MAJORS AND DEGREES: Biblical Studies, Applied Mathematics, Business Administration, Camp Ministries, Children's Ministries, Computer Information Systems, Computer Science, Counseling Psychology, Cross-Cultural Nursing, Cyber Security, Digital Marketing, Elementary Education, ESL Education, Intercultural Studies, Ministry Leadership, Nursing, Pre-Professional Health Science, Radiologic Technology, Respiratory Care, Paramedic, Medical Assistant, Dental Assistant, Secondary Education (endorsements in Business,

English, Math, Psychology & World History, World History), Youth Ministries, Dual Degree program with partner college for additional majors (Aviation, Accounting, Biology, Chemistry, Communication, Criminal Justice, Digital Art & Design, Economics, English, Environmental Science, Fine Arts, Politics, Sociology, Sport Marketing & Management, Wellness & Exercise Science)
STRENGTHS OF COLLEGE: Affordable, high retention rate, high graduation rate, high job placement rate
SPECIAL PROGRAMS: Archaeology minor with participation in archaeology dig in Israel, Certified Financial Planning minor, Teaching English to Speakers of Other Languages minor
TUITION: 2023/24 - \$20,000
FINANCIAL AID: Institutional Academic Scholarships, Institutional Need-Based Grant, Church Matching Scholarships, Ministry Matching Scholarships, participation in Federal and State Student Aid Programs, 99% of students received financial aid.

EVANGEL UNIVERSITY

1111 N. Glenstone Avenue
 Springfield, MO 65802
 417-865-2815
E-MAIL: admissions@evangel.edu
WEBSITE: www.evangel.edu
ADMISSIONS CONTACT: Admissions@evangel.edu
NUMBER OF STUDENTS: 2,200, including traditional and non-traditional undergraduates, graduate and online students
RELIGIOUS AFFILIATION: Assemblies of God
ESTABLISHED: 1955
ACCREDITATION: Higher Learning Commission & Other Accredited
MAJORS AND DEGREES: Behavioral & Social Sciences, Business, Communication, Center for Compassion, Education, Humanities, Kinesiology, Music, Natural and Applied Sciences, Pre-Professional Programs, Theology and Global Church Ministries
STRENGTHS OF COLLEGE: Offering more than 70 academic programs, Evangel University is on the cutting edge of today's professional fields and vocational ministry training. Its commitment to the integration of faith, learning, and life attracts students from a wide variety of Christian backgrounds. Evangel's students have a strong commitment to academics and an even stronger desire to combine their Christian faith with every aspect of their lives. When Evangel University opened its doors, it distinguished itself as the first Pentecostal liberal arts college charted in America.
SPECIAL PROGRAMS: Church & School Partnerships; Leadership; College of Adult and Graduate Studies; the Assemblies of God Theological Seminary; Fast Track program allowing you to graduate in 5 years with your Masters in Leadership & Ministry; Center for Compassion department offering programs in community relief & development.
TUITION: \$12,217 for 12-18 credit hours
FINANCIAL AID: At EU, we offer a wide range of undergraduate scholarships and need-based grants as well as on campus employment opportunities to help make your educational goals a reality. From academics to athletics and the arts, we recognize and reward your unique talent and hard work. Opportunities also exist for graduate and seminary students.

GRAND CANYON UNIVERSITY

3300 W Camelback Rd
 Phoenix, AZ 85017
 855-428-7884
E-MAIL: CampusAdmissions@gcu.edu
WEBSITE: www.gcu.edu
ADMISSIONS CONTACT: Samantha.Baldwin@gcu.edu
NUMBER OF STUDENTS: 22,000
RELIGIOUS AFFILIATION: Christian
ESTABLISHED: 1949
ACCREDITATION: Higher Learning Commission
MAJORS AND DEGREES: 229 Academic Programs
STRENGTHS OF COLLEGE: Grand Canyon University is Arizona's premier, private Christian university. We help students find their purpose by offering next-generation education with 299 academic programs, including more than 250 online programs, across nine distinct colleges. 1 Over 22,000 traditional students learn on our vibrant campus in the heart of Phoenix. 2 Spanning approximately 275 acres, GCU's campus continues to grow with new residence halls, academic buildings, popular eateries, student support resources and amenities, as well as state-of-the-art athletic facilities like GCU Stadium, the Canyon Activities Center and more. GCU has 30 labs available for use at no cost, featuring advanced equipment and dedicated faculty who work to ensure that our students experience hands-on learning from day one as freshmen. GCU also offers generous scholarship opportunities to make private education affordable and invests in revitalizing the community with a commitment to making a difference. Built upon a biblically rooted mission, GCU believes quality education and faith can coexist in the 21st century.
SPECIAL PROGRAMS: 1. Engineering and Technology 2. Pre-Health 3. Business
TUITION: • In-State Campus Tuition Cost Per Credit: \$687.50 • Out-Of-State Campus Tuition Cost Per Credit: \$687.50 • In-State Yearly Campus Tuition (12-18 Credits Per Semester): \$16,500 • Out-Of-State Yearly Campus Tuition (12-18 Credits Per Semester): \$16,500
FINANCIAL AID: www.gcu.edu/tuition-and-financial-aid

HANNIBAL-LAGRANGE UNIVERSITY

2800 Palmyra Rd.
 Hannibal, Missouri 63401
 573-629-3264
EMAIL: admissions@hlg.edu
WEBSITE: www.hlg.edu
ADMISSIONS CONTACT: Jordan Jones
NUMBER OF STUDENTS: 500
RELIGIOUS AFFILIATION: S. Baptist
ESTABLISHED: 1858
ACCREDITATION: Higher Learning Commission
MAJORS AND DEGREES: 30+, including graduate programs
STRENGTHS OF COLLEGE: Espouses a Biblical Worldview, believes in teaching relevant education, prepares students to be mindful of their communities, be transformational leaders, and impact future generations.
SPECIAL PROGRAMS: ASN 3+1, Education, and offers online and in-seat options
TUITION: \$25,200
FINANCIAL AID: Students have the options of academic, athletic, performance, and awards for select majors. Opportunities to join the Honor's Program or be a Student Ambassador.

HARDING UNIVERSITY

Box 12255
 Searcy, AR 72149
 501-279-44007
E-MAIL: admissions@harding.edu
WEBSITE: www.harding.edu
ADMISSIONS CONTACT: Matthew Schmitz
NUMBER OF STUDENTS: 5,000
RELIGIOUS AFFILIATION: Church of Christ
ESTABLISHED: 1924
ACCREDITATION: Higher Learning Commission
MAJORS AND DEGREES: 100+
STRENGTHS OF COLLEGE: HU is a Christ-centered community united by a bold mission: to bring together authentic faith, learning, and living. For nearly 100 years we have surrounded our remarkable students with compassion and care, developing and inspiring future leaders and people who are committed to making a difference. The education you find here is shaped by purpose, offering far more than an excellent degree. Alongside students from all across the U.S. and more than 50 nations, you will invest in your future as you pursue your meaning and purpose at Harding. From our beautiful Arkansas campus to every corner of the world, you will seek and serve, build and refine, grow and create wherever God calls you.
SPECIAL PROGRAMS: Study Abroad, Missions, NCAA Div. II, Honors College, Honors Symposium, Pre-Medicine, Nursing, Engineering, Cyber Security, Film, E-sports
TUITION: \$21,690
FINANCIAL AID: harding.edu/admissions/scholarships

HEARTLAND CHRISTIAN COLLEGE

321 Mercy St.
 Bethel, MO 63434
 660-284-4800
E-MAIL: admissions@heartlandcollege.edu
WEBSITE: www.heartlandcollege.edu
ADMISSIONS CONTACT: Judi Barton
NUMBER OF STUDENTS: 25
RELIGIOUS AFFILIATION: Non-denominational
ESTABLISHED: 1992
ACCREDITATION: ABHE-Association of Biblical Higher Education
MAJORS AND DEGREES: Associates Degree in Biblical Studies
STRENGTHS OF COLLEGE: We are a Christ-centered, discipleship-based college with a heart to see students graduate debt free. Our low student-to-teacher ratio allows us to focus on our mission for each student who walks through our doors. And that is to equip and prepare students to be servants of Jesus Christ, lifelong learners, and effective workers in local churches and communities around the world. We believe the Word of God is Truth, and knowing the Truth and learning how to apply it provides the foundation that HCC students need to be prepared for each new step in life.
SPECIAL PROGRAMS: Missions, Worship Arts, and Christian Education
TUITION: \$1,925 per semester. This includes housing and 1 meal a day, tuition, and fee's. Books are not included in this figure.
FINANCIAL AID: Government aid is not accepted

HESSTON COLLEGE

301 S. Main Street
 Hesston, KS 67062
 620-327-4221
E-MAIL: admissions@hesston.edu
WEBSITE: www.hesston.edu
ADMISSIONS CONTACT: Zach Reed
NUMBER OF STUDENTS: 350
RELIGIOUS AFFILIATION: Mennonite
ESTABLISHED: 1909
ACCREDITATION: The Higher Learning Commission
MAJORS AND DEGREES: Hesston College offers approximately 50 associate degree and 4, 4-year bachelor degree programs - Nursing, Business Management, Aviation, and Mechatronics Engineering.
STRENGTHS OF COLLEGE: Hesston College offers a Christ-centered, globally engaged experience for students from across the globe. HC is a place that becomes home. We have a tight knit community and very intentional degree programs with professors who care about you as an individual. There are also many different ways to get engaged in campus activities. From 14 different athletic teams, to performing arts, to club sports like disc golf and dance team, there's something for everyone!
SPECIAL PROGRAMS: Mechatronics is our three-disciplined Engineering program which includes Mechanical, Electrical and Computer Engineering. All of these together create a robotics-focused degree path. Our Business Management students have the opportunity to travel internationally to study the effects and influences businesses can have for the greater good of humanity.
TUITION: \$30,876 tuition, \$10,560 room/board
FINANCIAL AID: Average FA offer of more than \$27,000

JOHN BROWN UNIVERSITY

2000 W. University St.
 Siloam Springs, AR 72761
 479-524-7273
E-MAIL: dgeorge@jbu.edu
WEBSITE: www.jbu.edu
ADMISSIONS CONTACT: Daniel George
NUMBER OF STUDENTS: 1,240
RELIGIOUS AFFILIATION: Interdenominational (Evangelical)
ESTABLISHED: 1919
ACCREDITATION: John Brown University is accredited by the Higher Learning Commission, (800) 621-7440, 230 South LaSalle Street, Suite 7-500, Chicago, IL 60604.
MAJORS AND DEGREES: JBU offers over 50 programs of study. Top programs by enrollment include Nursing, Engineering, Biology, Psychology, Family and Human Services, Visual Art, Kinesiology and Education.
STRENGTHS OF COLLEGE: John Brown University is a Christ-centered university for students who want a top-notch education. JBU is ranked #10 in the South by U.S. News & World Report (2022, among regional universities) and #1 in Arkansas by The Wall Street Journal (2022).
SPECIAL PROGRAMS: JBU's 4+1 programs allows students to earn a bachelor's and master's degree in just 5 years. Master's degrees in business, counseling and education are available.
TUITION: \$28,424
FINANCIAL AID: Though it may seem impossible to afford JBU, we can help. Our personalized approach to financial aid means we're able to help families

from all kinds of economic backgrounds afford our Christ-centered and highly ranked education through the use of scholarships, grants and other aid. The average institutional gift aid package (not including state, federal, or other external aid) for incoming students in Fall 2020 was \$15,400. Financial aid packages depending on a number of factors, so your offer may be above or below average depending on your individual situation. The first step to getting financial aid is to apply for admission.

KANSAS CHRISTIAN COLLEGE

7401 Metcalf Ave.
 Overland Park, KS 66204
 913-722-0272
E-MAIL: admissions@kansaschristian.edu
WEBSITE: KansasChristian.edu
ADMISSIONS CONTACT: Dave Pedotto
NUMBER OF STUDENTS: 205
RELIGIOUS AFFILIATION: Church of God (Holiness)
ESTABLISHED: 1938
ACCREDITATION: The Association for Biblical Higher Education
MAJORS AND DEGREES: Interdisciplinary Studies, Business Leadership (Sport Management or Business Administration), Education, Psychology, Religion (Biblical Studies, Missions, Pastoral Ministry, Youth Ministry, or Worship Ministry), & Healthcare Administration
STRENGTHS OF COLLEGE: Formerly known as Kansas City College and Bible School, Kansas Christian College has been training men and women for service in the Kingdom of God since 1938. By offering a variety of ministry-related degrees in religion, business, education, music, and healthcare, we fulfill our mission "to develop servant leaders who know God, who have a passion for holiness of heart, and who are inspired and prepared for a lifetime of learning and kingdom service." KCC's vision is to see thousands of students change the world for Christ. The campus culture is very relational and diverse - with a 10:1 student to teach ratio and in just the last couple years over twenty countries have been represented within the student body.
SPECIAL PROGRAMS: Ministry Team, Worship Team, Sports [Men's and Women's Basketball, Men's and Women's Cross-Country and Track & Field, Men's Soccer, Women's Volleyball, Men's Baseball, Women's Bowling and we will be launching Women's Softball and Women's Flag Football soon.] KCC is also launching a Worship Institute and revamping our Drama/Theatre Department...stay tuned for more information.
TUITION: Block Tuition (12-15 hours) \$4,800/semester
FINANCIAL AID: Kansas Christian College offers student aid to nearly 100 percent of the student body via federal financial aid and/or institutional discounts and scholarships.

LIBERTY UNIVERSITY

1971 University Blvd.
Lynchburg, VA 24515
800-543-5317
E-MAIL: admissions@liberty.edu
WEBSITE: www.liberty.edu
ADMISSIONS CONTACT: <https://www.liberty.edu/residential/contact-us/>
NUMBER OF STUDENTS: 16,000
RELIGIOUS AFFILIATION: Non-Denominational
ESTABLISHED: 1971
ACCREDITATION: SACSCOC
MAJORS AND DEGREES: 300+
STRENGTHS OF COLLEGE: Here you'll meet students who know they can be and do any thing. They celebrate uniqueness. They stand up for others. They put faith into practice and apply what they learn to real-world situations, all while preparing to thrive in a career. They are empowered – not just academically, but also personally – to drive change, and they inspire one another to be extraordinary.
SPECIAL PROGRAMS: Over 100 student led clubs, 39 club sports, 20 NCAA D1 sports, and a variety of intermural teams
TUITION: \$23,800
FINANCIAL AID: 95% of students receive Financial aid:www.liberty.edu/student-financial-services/scholarships/

LINDENWOOD UNIVERSITY

209 South Kingshighway
St. Charles, MO 63301
636-949-4949
E-MAIL: admissions@lindenwood.edu
WEBSITE: <https://www.lindenwood.edu/admissions/>
ADMISSIONS CONTACT: Devin Darden
NUMBER OF STUDENTS: 4,808
RELIGIOUS AFFILIATION: Judeo-Christian
ESTABLISHED: 1827
ACCREDITATION: The Higher Learning Commission
MAJORS AND DEGREES: Over 90 degree options between our four institutional colleges. College of Arts and Humanities, College of Education and Human Services, College of Science, Technology and Health, and College of Business and Entrepreneurship.
STRENGTHS OF COLLEGE: Our strength lies in our community. Second only to educational success, Lindenwood is heavily focused on the student experience. When you graduate from Lindenwood you will be leaving with opportunity for your future and memories to last a lifetime.
SPECIAL PROGRAMS: BRAND NEW D1 ATHLETICS! We also have specialty programs for education such as Dance, Game Design, Paramedicine, Fashion Business and Design, Art and Design, Forensics, Sports Management and numerous Pre-Professional programs.
TUITION: \$19,100
FINANCIAL AID: Academic Scholarships for all admitted students, opportunities for Athletic Aid, Need Based Aid, Presidential Scholarships, and Inclusive Leadership Scholarships.

MANHATTAN CHRISTIAN COLLEGE

1415 Anderson Ave.
Manhattan, KS 66502
785-539-3571
E-MAIL: admit@mccks.edu
WEBSITE: www.mccks.edu
ADMISSIONS CONTACT: Allie Hammack
NUMBER OF STUDENTS: 175
RELIGIOUS AFFILIATION: Christian
ESTABLISHED: 1927
ACCREDITATION: Higher Learning Commission of North Central Association of Colleges and Universities (HLC) and Association of Biblical Higher Education
MAJORS AND DEGREES: B.A. or B.S. Children's and Family Ministry, Counseling, Intercultural Studies, Pastoral Ministry, Social Justice, Biblical and Theological Studies, Youth Ministry
Online B.S. Management and Ethics, Biblical Leadership
STRENGTHS OF COLLEGE: MCC is a private Christian college with a very strategic location across the street from Kansas State University. Those two characteristics combine to help MCC provide a unique training ground for young leaders to help them become the best they can be to influence the world around them for Christ.
SPECIAL PROGRAMS: Student government, mission trips, intramurals, competitive varsity athletics governed by the National Christian College Athletic Association: men's and women's soccer, men's and women's basketball, men's and women's cross country, women's volleyball
TUITION: \$18,000 (full-time for year)
FINANCIAL AID: \$500 scholarship for everyone attending a Thunder Thursday campus visit. Numerous other scholarships are also available.

MIDAMERICA NAZARENE UNIVERSITY

2030 E College Way
Olathe, KS 66062
913-782-3750
E-MAIL: athooker@mnu.edu
WEBSITE: mnu.edu
ADMISSIONS CONTACT: Adam Hooker
NUMBER OF STUDENTS: 2200
RELIGIOUS AFFILIATION: Nazarene
ESTABLISHED: 1966
ACCREDITATION: HLC
MAJORS AND DEGREES: Our more than 70 areas of study in undergraduate, graduate and certificate programs are known for quality and a personal, student-focused approach. As an undergraduate, you can major in popular programs like business, education, nursing, ministry and kinesiology. Our pre-professional partnerships include counseling, dentistry, engineering, law, medicine, physical therapy, occupational therapy, pharmacy and more.
We also offer graduate degrees in business, education, nursing, counseling, and postgraduate certificates. Online programs include classes in education, nursing, business and associate's-level studies. You can study abroad as well as participate in service-learning trips and experiences through Pioneer Trek.
STRENGTHS OF COLLEGE: At MNU, you'll discover your passions and find your calling while learning from professors who know your name. MNU is a welcoming Christian learning community for students from right here in the Midwest and around the world.
SPECIAL PROGRAMS:
TUITION: 35,120
FINANCIAL AID: \$20,000, on average

MIDWESTERN SEMINARY AND SPURGEON COLLEGE

5001 N. Oak Trafficway
Kansas City, MO 64118
816-414-3733
E-MAIL: admissions@mbts.edu
WEBSITE: spurgeoncollege.com
ADMISSIONS CONTACT: Hayden Summerhill
NUMBER OF STUDENTS: 800 undergraduate students
RELIGIOUS AFFILIATION: Baptist
ESTABLISHED: 1957
ACCREDITATION: ATS, HLC, ABHE
MAJORS AND DEGREES: Ministry, missions, counseling, business, education, and more!
STRENGTHS OF COLLEGE: Training students for the Kingdom and for the Church to make disciples for every context.
SPECIAL PROGRAMS: Accelerate: Bachelor's and Master's in 5 years.
TUITION: \$335/credit hour
FINANCIAL AID: contact financialaid@mbts.edu

MILLIGAN UNIVERSITY

1 Blowers Blvd.
Milligan, TN 37682
423-461-8700
E-MAIL: admissions@milligan.edu
WEBSITE: milligan.edu
ADMISSIONS CONTACT: milligan.edu/admissions/startyourjourney/
NUMBER OF STUDENTS: 1100
RELIGIOUS AFFILIATION: Independent Christian Churches
ESTABLISHED: 1866
ACCREDITATION: SACSCOC
MAJORS AND DEGREES: Top 5: Business, Exercise Science, Nursing, Engineering, Psychology
STRENGTHS OF COLLEGE: Milligan offers more than 100 majors, minors, pre-professional degrees and concentrations in a variety of fields, along with graduate and adult degree completion programs. You get the best of both worlds at Milligan. Our picturesque campus is located in beautiful northeastern Tennessee, within minutes of restaurants, shopping, theatre, and cultural activities, as well as plenty of outdoor adventures like hiking, skiing, and more. Consistently recognized for quality and value, Milligan has been ranked by U.S. News and World Report as one of the best regional universities in the South for quality and value. Milligan is known for its core values: Scholarship - Pursue Knowledge, Community - Pursue Relationships and Faith- Pursue God.
TUITION: \$37,700
FINANCIAL AID: Yes, 100% of students receive institutional financial aid

MISSOURI BAPTIST UNIVERSITY

1 College Park Dr.
St. Louis, MO 63141
314-434-1115
E-MAIL: mbuadmissions@mobap.edu
WEBSITE: mobap.edu
ADMISSIONS CONTACT: mbuadmissions@mobap.edu
NUMBER OF STUDENTS: 4,203
RELIGIOUS AFFILIATION: Southern Baptist
ESTABLISHED: 1964
ACCREDITATION: Higher Learning Commission
MAJORS AND DEGREES: 65+ majors, 45+ minors
STRENGTHS OF COLLEGE: School of Nursing, School of Education, Exercise Science
TUITION: \$29,076

MISSOURI SCHOOL OF BLACKSMITHING AND MISSOURI SCHOOL OF PLAIN AND PRACTICAL LIVING SKILLS

3100 NW Winchester Road
Cameron, MO 64429
816-575-2798
WEBSITE: mo-schools.com
ADMISSIONS CONTACT: Matthew Burnett, Master Blacksmith, Owner and Lead Instructor 816-575-2798
NUMBER OF STUDENTS: 64
RELIGIOUS AFFILIATION: CHRISTIAN
ESTABLISHED: 2016
ACCREDITATION: Artist Blacksmith's Association of North America (ABANA)
MAJORS AND DEGREES: National Curriculum Program Blacksmithing Certification, Classes on other traditional crafts and skills.
STRENGTHS OF COLLEGE: All classes are hands-on, and taught by expert instructors.
SPECIAL PROGRAMS: Yes
TUITION: Varies
FINANCIAL AID: Not currently

OKLAHOMA BAPTIST UNIVERSITY

500 West University St.
Shawnee, OK 74804
405-585-5000
E-MAIL: admissions@okbu.edu
WEBSITE: www.okbu.edu
ADMISSIONS CONTACT: Alix Nelson
NUMBER OF STUDENTS: 1,510 from 37 states and 26 other countries
RELIGIOUS AFFILIATION: Southern Baptist
ESTABLISHED: 1910 by the Baptist General Convention of Oklahoma
ACCREDITATION: The Higher Learning Commission North Central Association of Colleges and Schools
MAJORS AND DEGREES: Oklahoma Baptist University has nine bachelor's degree in 80 areas of study and offers four master's degree programs.
STRENGTHS OF COLLEGE: OBU is a boldly faith-forward university, where exceptional academics merge with a deeply engaged community, developing students into the next generation of future shapers. As an OBU student, you will grow not only in knowledge, but also in faith that will help you make a difference in the world.
SPECIAL PROGRAMS: OBU's Christian liberal arts curriculum broadens your perspective, preparing you for your future career and your life. Top programs include nursing, theology, teacher education, communication studies and

criminal justice. OBU boasts a world-class Honors Program as well.
TUITION: \$42,480. All-inclusive except books.
FINANCIAL AID: 100% of OBU students receive some type of aid.

OKLAHOMA CHRISTIAN UNIVERSITY

2501 E Memorial Rd
Edmond, OK 73013
405-425-5000
E-MAIL: info@oc.edu
WEBSITE: oc.edu
ADMISSIONS CONTACT: Megann Olsson
NUMBER OF STUDENTS: 2,250
RELIGIOUS AFFILIATION: Church of Christ
ESTABLISHED: 1950
ACCREDITATION: Higher Learning Commission, Association of Collegiate Business Schools and Programs, ABET, National Council for the Accreditation of Teacher Education, Commission on Collegiate Nursing Education, NAACLS, National Association of Schools of Music, Council for Interior Design Accreditation, ATS
MAJORS AND DEGREES: For the full list, visit <https://www.oc.edu/academics/undergraduate-programs> Bible, Business, Biology, Chemistry, Communication, Computer Science, Education, Engineering, Exercise Science, Gaming and Animation, Interior Architecture, Music, Nursing, Pre-Law, Public Relations, Video Production
STRENGTHS OF COLLEGE: Oklahoma Christian University is defined by the collective impact of our many incredible individuals. We are a passionate group of Christ-followers made up of educators, learners, seekers and creators. We are driven by missions - not just majors and believe everyone has an important significance to this world. You are wanted here - and great things are expected of you. With over 80 fields of study, we're unflinchingly Christian and undeniably top tier. Here you'll learn alongside masterful teachers and world-class experts. The world awaits your story...let's write the next chapter together
SPECIAL PROGRAMS: Day Six: Careers & Calling, Study Abroad, Sports:
NCAA Div 2
TUITION: \$24,550/year
FINANCIAL AID: <https://www.oc.edu/admissions/financial-services/financial-aid>

ORAL ROBERTS UNIVERSITY

7777 South Lewis Avenue
Tulsa, OK 74171
918.495.6518
E-MAIL: admissions@oru.edu
WEBSITE: oru.edu
ADMISSIONS CONTACT: Joe Sims
NUMBER OF STUDENTS: 5,000+
RELIGIOUS AFFILIATION: Interdenominational
ESTABLISHED: 1963
ACCREDITATION: The Higher Learning Commission; Member, Council for Christian Colleges and Universities (CCCCU); Member, Oklahoma Independent Colleges and Universities (OICU); Member, Council of Independent Colleges (CIC)
MAJORS AND DEGREES: ORU offers 150+ majors, minors, concentrations, and pre-professional programs across six unique colleges and every academic interest. Students pursue degrees from ORU's College of Arts and Cultural Studies,

College of Business, College of Education, College of Health Sciences, College of Science & Engineering, and College of Theology & Ministry. ORU also offers 15 master's degrees and 4 doctoral degrees.

STRENGTHS OF COLLEGE: ORU is a world-renowned private Christian university dedicated to cultivating well-rounded leaders who are trained to be influencers. By combining academic excellence with real-world experience, we equip and empower students with the competitive edge necessary to succeed in their careers and thrive in all areas of life. Graduates launch from ORU prepared to succeed because of ORU's unique Whole Person Education that transforms students spiritually, academically, and physically while equipping them to become Whole Leaders for the Whole World.

SPECIAL PROGRAMS: Our Advantage Program is a dual enrollment option so that high school students can earn college credit for a largely discounted cost.

TUITION: 2022-2023 Undergraduate tuition: \$32,500; room and board varies based on tiered plans offered.

FINANCIAL AID: ORU is committed to awarding scholarships and grants this academic year through our premier Quest Whole Leader Scholarships (covering up to the cost of full tuition), NCAA Division I Athletic Scholarships, First Generation Scholarships, and more! We also participate in state and federal financial aid through the FAFSA.

OZARK CHRISTIAN COLLEGE

1111 N Main St.
Joplin, MO 64801
417-680-5678
E-MAIL: admissions@occ.edu
WEBSITE: www.occ.edu
ADMISSIONS CONTACT: Lindsay Ellison
NUMBER OF STUDENTS: 650
RELIGIOUS AFFILIATION: Christian Church
ESTABLISHED: 1942
ACCREDITATION: ABHE, HLC
MAJORS AND DEGREES: Undergraduate: Bachelor of Theology, Bible and Global

Outreach, Biblical Communication, Biblical Justice, Biblical Studies (online degree), Children's Ministry, Christian Formation, Christian Ministry, Counseling and Pastoral Care, Creative Arts Ministry, Intercultural Studies, Music and Worship, Organizational Leadership, Student Ministry | Graduate: Master of Arts in Biblical Ministry

STRENGTHS OF COLLEGE: Practical ministry training with a strong Bible emphasis.

TUITION: \$456 per credit hour
FINANCIAL AID: occ.edu/finaid - We offer competitive merit-based scholarships, need-based aid to incoming freshmen, and federal pell grants

SOUTHERN NAZARENE UNIVERSITY

6729 NW 39th Expressway
Bethany, OK 73008
405-491-6324
E-MAIL: admissions@snu.edu
WEBSITE: snu.edu
ADMISSIONS CONTACT: Debbie Sanders
NUMBER OF STUDENTS: 2100, undergraduate, graduate and online students
RELIGIOUS AFFILIATION: Nazarene
ESTABLISHED: 1899
ACCREDITATION: Higher Learning Commission
MAJORS AND DEGREES: Accounting (BS), Art & Graphic Design (BA), Biology (BS), Biology-Chemistry (BS), Business Administration (BS), Chemistry (BS), Early Childhood Education (BS), Elementary Education (BS), English (BA), Environmental Science (BS), Exercise Science (BS), Finance (BS), Global Studies (BS), History (BA), International Business (BS), Management (BS), Marketing (BS), Mass Communication (BA), Mathematics (BS), Mathematics Education (BS), Missions (BA), Music (BA), Music Education - Instrumental or Vocal Concentration, Music - Commercial Music Production, Music - Performance Emphasis: Instrumental, Keyboard, or Vocal Concentration, Nursing (BSN), Pastoral Ministry (BA/BS), Physical Education - P-12 (BS), Physical Education - Sports and Leisure (BS), Politics and Law (BA), Pre-Athletic Training (BS), Pre-Occupational Therapy (BS), Pre-Physical

Therapy (BS), Psychology (BA/BS), Science Education (BS), Social Studies Education (BS), Sport Management (BS), Theology (BA/BS), Music - Worship Arts Emphasis, Youth Ministry

STRENGTHS OF COLLEGE: Since 1899, Southern Nazarene University has set the standard for innovative servant leadership. Through service-oriented classrooms to a vibrant campus community, 15 Division II athletic programs, competitive internships, and high job placement, we lead by example.

SPECIAL PROGRAMS: Presidential Leadership Program, Honors Program, Equestrian Team, Department Scholarships, ROTC, International Study Abroad options including SNU's own research facility in Costa Rica.

TUITION: 23-24 Block Tuition: \$28,000, Room & Board: \$8,200, General/Health Fee: \$1,600, Yearly Total: \$37,800

FINANCIAL AID: Over 90% of our students receive financial aid. At SNU, we offer a wide range of undergraduate scholarships and need-based grants, as well as on-campus employment opportunities, to help make your educational goals a reality. Visit snu.edu/financial-undergraduate for more info.

SOUTHWEST BAPTIST UNIVERSITY

1600 University Ave.
Bolivar, MO 65613
417-328-1810
E-MAIL: admissions@SBUniv.edu
WEBSITE: www.SBUniv.edu
ADMISSIONS CONTACT: Abby Wilken
NUMBER OF STUDENTS: 1,000
RELIGIOUS AFFILIATION: Southern Baptist
ESTABLISHED: 1878
ACCREDITATION: Higher Learning Commission
MAJORS AND DEGREES: Over 100 areas of study
STRENGTHS OF COLLEGE: Business, Education, Nursing, Exercise Science, Physical Therapy
SPECIAL PROGRAMS: Masters of Business Administration, Masters and Doctorate of Education
TUITION: \$27,290 (Tuition) \$37,272 (Tuition, Room, Board, most fees)
FINANCIAL AID: 100% of students receive financial aid. The average financial aid package is over \$26,000

STORLING CONSERVATORY OF DANCE

14808 W. 117th Street
Olathe, KS. 66062
913-393-3141
admissions@storlingconservatory.com
WEBSITE: http://www.storlingconservatory.com/
ADMISSIONS CONTACT: Suzanne Ryanstrati: Suzanne@visible.edu
NUMBER OF STUDENTS: 25-30
RELIGIOUS AFFILIATION: Christian
ESTABLISHED: 2020
ACCREDITATION: Storling Conservatory of Dance is a partner teaching site for Visible Music College. Visible is a member of the Transnational Association of Christian Colleges and Schools (TRACS)
MAJORS AND DEGREES: Three-year Bachelor of Arts in Dance; One-year Certificate in Dance
STRENGTHS OF COLLEGE: Storling Conservatory students have a chance to study with Storling Dance Theater's professional neo-classical modern dance company in an intimate, community-focused atmosphere. We lead each

student to discover the artist they were created to be.

SPECIAL PROGRAMS: Our conservatory-style, 4-year BA degree can be completed in an accelerated format of 3 years and 2 summer terms. We also offer a degree completion track for adults and professional artists. Dual enrollment is available for eligible high school seniors.

TUITION: Certificate: \$13,500 for one year | BA: \$20,000 per year

FINANCIAL AID: Scholarships Available

TABOR COLLEGE

400 S Jefferson
Hillsboro, KS 67063
620-947-3121
E-MAIL: admissions@tabor.edu
WEBSITE: WWW.tabor.edu
ADMISSIONS CONTACT: Kelly Dugger
NUMBER OF STUDENTS: 550
RELIGIOUS AFFILIATION: Mennonite Brethren
ESTABLISHED: 1908
ACCREDITATION: Yes
MAJORS AND DEGREES: At Tabor College, we have 26 bachelor's level programs—representing a host of concentrations and emphases- * Denotes a concentration within a major; - Denotes Licensure: Art & Design, Majors, Graphic Design, Studio Art, Minors, Graphic Design, Painting, Athletic Training, Major, Athletic Training, Bible, Religion & Philosophy, Majors, Biblical and Religious Studies, Christian Ministry, *Christian leadership concentration, *Youth ministry concentration, *Mission concentration, Minors, Christian Leadership, Mission, Philosophy, Youth Ministry, Business, Graduate.

STRENGTHS OF COLLEGE: The core values that influence the mission and vision of Tabor College include a commitment to being Christ-centered in all aspects of life, a passion for learning, the promotion of service to others, and meaningful involvement in college and community activities.

SPECIAL PROGRAMS: Presidential Leadership Program, Honors Program, Department Scholarships, International Study Abroad options.

TUITION: \$45,850 All-inclusive pricing

FINANCIAL AID: Tabor College offers student aid to nearly 100 percent of the student body. Academic, Performance and Department Scholarships available for qualifying students.

UNIVERSITY OF NORTHWESTERN - ST. PAUL

3003 Snelling Avenue North
St. Paul, MN, 55113
651-631-5152
E-MAIL: vrwhiteford@unwsp.edu
WEBSITE: www.unwsp.edu
ADMISSIONS CONTACT: Victoria Whiteford
NUMBER OF STUDENTS: 1700
RELIGIOUS AFFILIATION: Non-Denominational
ESTABLISHED: 1902
ACCREDITATION: Higher Learning Commission. Incorporated under the laws of the state of MN as a College of the Bible, Arts and Sciences, and Professional Education. Approved by the MN Board of Teaching to offer programs leading to teacher licensure. Approved by the State of MN Department of Veterans Affairs for the training of veterans as well as survivors and dependents of veterans. An accredited institutional member of the National Association of Schools of Music. A member of the

American Association of Colleges for Teacher Education, MN Association of Colleges for Teacher Education (MACTE), Upper Midwest Athletic Conference, National Collegiate Athletic Association (NCAA-DIII), National Christian College Athletic Association, Council for Christian Colleges & Universities, Council of Independent Colleges, North American Coalition for Christian Admissions Professionals and endorses the NACAP principles of good practice, American Council on Education, Association of Governing Boards, Council for Advancement and Support of Education, National Association of Independent Colleges and Universities, and the National Association of Evangelicals. A charter member of the Evangelical Council for Financial Accountability and Association of Christian Schools International. Accreditation Board for Engineering and Technology, the global accreditor of college and university programs in applied and natural science, computing, engineering, and engineering technology.

STRENGTHS OF COLLEGE: Pre-requisite to have a faith in Christ. Over 75 majors that are passionately taught from a Christ-centered worldview. Elite professional placement. Automatic double major (2nd major being Bible)

SPECIAL PROGRAMS: Engineering, Business, Ministry/Bible, Education, Nursing, Pre-Med, Communication, Art, Fine Art/Music/Theatre, Psychology

TUITION: \$35,970.

FINANCIAL AID: Based on unweighted GPA or Test Score, whichever is higher for the student. Merit Scholarships are up to \$16,000 a year. Need based aid is offered as well. Several academic and extracurricular scholarship are available.

UNIVERSITY OF THE OZARKS

415 N College Ave.
Clarksville, AR 72830
1-800-264-8636
E-MAIL: admission@ozarks.edu
WEBSITE: www.ozarks.edu
ADMISSIONS CONTACT: Joseph Hughes
NUMBER OF STUDENTS: 785
RELIGIOUS AFFILIATION: Presbyterian
ESTABLISHED: 1883
ACCREDITATION: Higher Learning Commission (HLC)
MAJORS AND DEGREES: Art, English, History, Music, Philosophy, Religion, Spanish, Theatre, Biology, Chemistry, Mathematics, Environmental Studies, Health Science, Psychology, Accounting, Business Administration, Communication Studies, Elementary Education, Physical Education, Political Science, Sustainable Agriculture, Criminal Justice, Economics, Film Studies, Management, Marketing, Media Production

STRENGTHS OF COLLEGE: Community-based, personalized education, create your own degree curriculum, Outdoors involvement, 91% placement after graduation across all programs, 20 D3 athletics

SPECIAL PROGRAMS: ROTC, Greystone Military Academy, Jones Learning Center for students with learning disabilities

TUITION: \$24,950 tuition, \$8,000 room & meals, 1,000 book & educational materials

FINANCIAL AID: Based on GPA, up to \$14,000 a year. Need-based aid offered as well. Music and Theatre Scholarships also available. Stackable scholarships and aid.

Tour Israel

This is your chance for the trip of a lifetime!



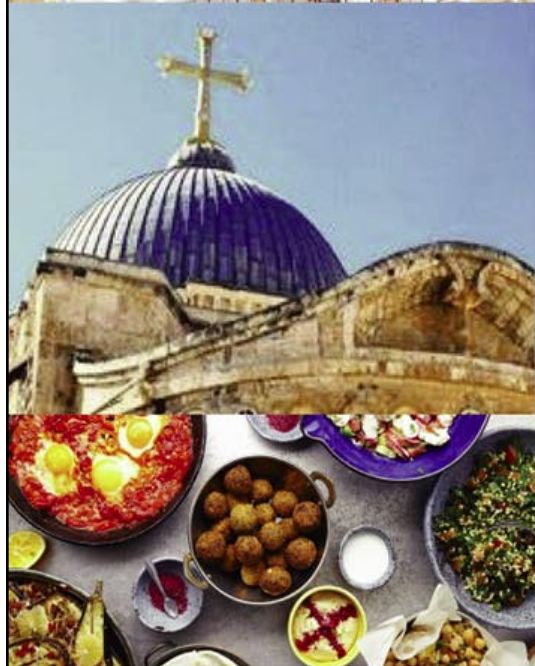
10 DAYS • All-Inclusive
Spring 2023 – Sold Out
Spring 2024 & November 2024

Hosted by Dwight & Anita Widaman. An experience like no other.
Call 816-524-4522 • heartlandtoholilyland@gmail.com

We can plan a trip for your school, church or ministry. Ask us how.

Tour Israel

This is your chance for the trip of a lifetime!



10 DAYS • All-Inclusive
Spring 2023 – Sold Out
Spring 2024 & November 2024

We can
plan a trip for
your school,
church or
ministry. Ask
us how.

Hosted by Dwight & Anita Widaman. An experience like no other.
Call 816-524-4522 • heartlandtoholylnd@gmail.com